

RESEARCH STATEMENT

Original Creative Work

Citation:

Milroy, A 2012, "Forest Floor", creative work, The Artist, Brisbane, Qld.,
<http://greenvalegallery.com/wp-content/uploads/2014/03/AKMilroyCV.pdf>

A joint exhibition by 10 Queensland artists/scientists; visualizing the Australian landscape. Works were exhibited at the Richard Randall Art Studio, Mt Coot-tha Botanic Gardens, Brisbane from the 30th November to the 2nd December, 2012. The online exhibition is available through <http://greenvalegallery.com/theextantlandscape/>. The Exhibitors: AK Milroy, Ashley Holmes, Adele Outteridge, Andrea Bidwell, Wim de Vos, Alan Thompson, Lyn Barnes, Annabel Tully, Leah Cameron, Andrew Rozefelds.

Research Background

- **Field:** Mixed media: linen thread & ink used in traditional and contemporary ways to evoke responses to the visualised Australian landscape.
- **Context:** Interdisciplinary and multiple media.
- **Research Question:** How do contemporary artists/scientists visualise today's landscape?

Research Contribution

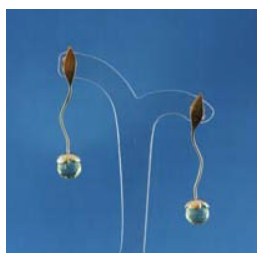
- **Innovation:** Visualizing knowing: awareness and communication in new/old media.
- **New Knowledge:** Unique visual knowing: new creative works of art.

Research Significance

- **Evidence of Excellence** – Exhibition opened by the Mayor of Quilpie Shire (and Chairman of the Outback Gondwana Foundation) Cr Stuart Mackenzie.

Media – ABC Rural: *Remote country art draws a city crowd* by Neroli Roocke, Monday, 3, December 2012: <http://www.abc.net.au/rural/qld/content/2012/12/s3646253.htm>

Examples:



AKM 6 Florescence
Series, by AK Milroy,
2012 (size 5cm)



AKM5 Memories of an
Inland Sea Series, AK
Milroy, 2012 (4cm x
3cm)



AKM18 Forest Floor, AK
Milroy, 2012 (19cm x 13cm x
3cm))

Author: Anita Milroy

Date: 22 January, 2013

ACQUIRE - Central Queensland University Institutional Repository <http://acquire.cqu.edu.au>