

# **Brigalow Scrub and Melon Holes**

The early history of  
Park Avenue, Glenmore  
and Black Ball Flat



Photograph of Margaret York (1845–1937), resident of *Corpach* at Four-Mile and known as Granny by more than just her family

### Books by the same author:

Time and place: the Merediths of County Sligo

Another time and place: the Black and McKim families of County Sligo

Quiet Achievers: The Black and Parker families of Central Queensland

Morinish: Where the Bottle Tree Stands

# **Brigalow Scrub and Melon Holes**

The early history of  
Park Avenue, Glenmore  
and Black Ball Flat

**Lex Johnson**

*Adjunct Associate, CQUniversity Australia*

# Brigalow Scrub and Melon Holes

## The early history of Park Avenue, Glenmore and Black Ball Flat

Lex Johnson

*Especially for Gran, Pop, Grandma and Grandad, mine and others'*

© Lex Johnson 2013

All world rights reserved. No part of this work may be printed, copied, reproduced, stored in or introduced into a retrieval system or transmitted in any form or by any means (electronic, mechanical, photocopying, recording or otherwise) without the prior written permission of the publisher and the author. Any person or organization which performs any unauthorized act in relation to this publication may be liable to criminal prosecution and civil claims for damages.

The author has taken every effort and care to confirm statements made and ensure the information presented herein represents facts and hypotheses current at the time of publication. No responsibility is accepted for loss, inconvenience or damage resulting from any representations contained herein. Every effort and care has been made to give appropriate recognition to sources and recognize whenever prior permission should be obtained from any copyright holders. The author and publisher offer sincere apologies for any inadvertent infringements and request the owner of such copyright to contact them.

National Library of Australia Cataloguing-in-Publication entry:

Author: Johnson, Lex, author.

Title: Brigalow scrub and melon holes: the early history of Park Avenue, Glenmore and Black Ball Flat / Lex Johnson.

ISBN: 9780980633344 (hardback)

Notes: Includes bibliographical references and index.

Subjects: York Family.

Wade family.

Smith family.

Schalch family.

Queensland, Central--History.

Queensland, Central--Social conditions.

Queensland, Central--Genealogy.

Dewey Number: 929.209943

The author researched source materials for this book between 1994 and 2013. Text, drawings, charts, artwork, design, layout and typesetting © Lex Johnson 1994–2013. Photographs by Lex Johnson, Ken Johnson (1936–2003), Mel Tati and some unknown photographers. Small, almost negligible, portions of text are used with permission from the author's earlier books.

Published by the author, Lex Johnson, P. O. Box 9674, Park Avenue, Queensland 4701, Australia; email [lj-publications@hotmail.com](mailto:lj-publications@hotmail.com). For further copies, contact the author.

# Contents

List of illustrations .....	ix
Acknowledgments.....	xv
Preface.....	xvi
Introduction – Laying the foundations .....	1
I.1 County of Livingstone.....	1
I.2 Rockhampton’s early facilities (1853–1865) .....	3
I.3 Celebrating successful colonisation .....	5
<i>Glenmore Run</i> and its early resumptions .....	7
1.1 The rise and fall of <i>Old Glenmore</i> .....	7
1.2 Early sales and subdivisions at North Rockhampton.....	12
1.3 Early sales around Town of Glenmore .....	17
1.4 Sale of <i>Glenmore Station</i> .....	28
1.5 Example of early subdivision – <i>Eton Vale</i> , portions 119 and 120.....	29
The <i>Utopia</i> makes its splash .....	33
2.1 Attracting people to Queensland.....	33
2.2 The Black Ball Line.....	33
2.3 The ship .....	34
2.4 The voyage.....	34
2.5 The arrival.....	35
2.6 The mutineers’ fate .....	36
Carving up the remainder.....	39
3.1 Splitter’s Creek vicinity .....	39
3.2 Queen’s Park and Recreation Reserve.....	39
3.3 Between Queen’s Park and Splitter’s Creek – higher section .....	41
3.4 Thomas Page and John O’Rourke .....	44
3.5 The insolvent estate of the late John Alexander Watt.....	45
3.6 All roads lead to Yaamba.....	46
3.7 John Taylor and Black Ball Flat .....	48
3.8 Between Queen’s Park and Splitter’s Creek – lower section near the river .....	50
3.9 Between Black Ball Flat and the Berserker foothills.....	54
3.10 Cemetery reserve, portion 235 .....	56
<i>Glenmore Run</i> and the encroaching selections .....	59
4.1 Activity on <i>Glenmore Run</i> .....	59
4.2 Death of Samuel Bradford Birkbeck .....	59
4.3 Brief overview of the Birkbeck family .....	60
4.4 Later activity on <i>Glenmore Run</i> .....	61
4.5 Resumption for selections.....	61
4.6 Life on a shrinking <i>Glenmore</i> .....	62
Selected families on Glenmore selections.....	65
5.1 Dick and Bligh families .....	65
5.2 Vere Cameron and Margaret Stewart .....	68
5.3 John York.....	68
5.4 Alexander and Jane Gunn.....	71
5.5 Alexander John Black, Thomas McKim Black and Hugh Hunter Parker .....	71
5.6 McConnell and Bradley families .....	72
5.7 Samuel Part and his family .....	73
5.8 John Wadson Cragg .....	74

Selections and larger properties above Black Ball Flat.....	77
6.1 The Birkbecks .....	77
6.2 Dennis Cifuentes, Alfred Birkbeck and Patrick Brannelly, portion 248A .....	77
6.3 James McConnell, portion 238A.....	78
6.4 John York on <i>Corpach</i> , portions 237B, 238A and 249A.....	80
6.5 Elizabeth McGregor on <i>Valleyfield</i> , Selections 184, 950 and 1529.....	91
6.6 Mary Bradley, portions 240A and 241A and Selection 1530 .....	93
6.7 Heinrich Wilhelm Lorentzen, portion 242A .....	94
6.8 Moloney, Cameron, Willcock and York on <i>Glen View</i> , Selection 503.....	94
6.9 Alexander Richardson Part and Mary Bradley on Selections 661 and 1687 .....	96
6.10 Herman Werner on old Yaamba Road near Moore's Creek .....	96
6.11 Alexander Gunn and his family on <i>Almond Hill</i> and other selections .....	98
6.12 Werner, McGregor, Bradley and others on <i>Greenwood</i> , Selection 288.....	101
6.13 Richter and Goebel families of Mount Hedlow Road.....	103
6.14 William Black on Selection 144.....	105
6.15 Thomas McKim Black on Selection 1371 .....	105
6.16 Camping and water reserve, R.249 .....	107
6.17 Thomas McKim Black's family, portions 15, 16, 241A, 503, 661 and 950 .....	108
6.18 The Moore and Bean families on portions 241A, 242A and 661.....	111
6.19 The Kent family on portions 239A, 240A, 184 and 950 .....	111
6.20 Breaking up Selection 201, <i>Parkhurst Estate</i> .....	112
Selected families elsewhere in Park Avenue and Glenmore .....	117
7.1 Passengers aboard the <i>Fritz Reuter</i> (1877) and <i>Merkara</i> (1883) .....	117
7.2 Weisse family from Dresden, Saxony.....	118
7.3 Schalch family from Schaffhausen, Switzerland .....	120
7.4 Frank Wade from Somerset .....	129
7.5 Windress family from Lancashire and Yorkshire .....	140
7.6 Smith family from East and North Ridings of Yorkshire .....	142
7.7 Hopkins, Foreman, Jones, Dean and Welch connections.....	150
7.8 Gent, Pardy, Gough, Ward connections.....	152
7.9 Tung Yeen (Wing Wah).....	153
7.10 Herman Blanchard .....	154
Subdivisions in and around Glenmore township .....	155
8.1 Portions 119 and 120, <i>Eton Vale</i> .....	155
8.2 Portion 112 .....	155
8.3 Portion 121 .....	157
8.4 Portion 123, <i>Montague Estate</i> .....	160
8.5 Snippets of neighbouring portions .....	165
Subdivisions in upper Park Avenue.....	167
9.1 Portion 238 .....	167
9.2 Portion 237, between Queen's Park and the top of Park Avenue .....	169
9.3 Portion 154, <i>Penndorris Estate</i> .....	173
9.4 Portions 156 to 158, including <i>Coalition Estate</i> .....	177
9.5 Portions 159 and 160.....	180
9.6 Portion 162 .....	182
9.7 Portion 236, <i>Glenmore Farm</i> .....	183
9.8 Portion 161, <i>Park Avenue Estate</i> .....	187
Subdivisions near the river .....	193
10.1 Thomas Bellas – portions 244, 245 and 246 .....	193
10.2 Morris and Connolly families and their holdings.....	193
10.3 Portions 246 and northwestern 245, <i>Queen's Park Estate</i> .....	198
10.4 Edith Emily Morris' holdings – portions 244 and southeastern 245.....	206
10.5 Tung Yeen's holdings – portions 241, 242, 243, including <i>Preston Estate</i> .....	209

10.6 James Carson's holdings – <i>Kensington, River View and Queen's Park Estates</i> .....	213
10.7 James Sallows and Thomas Hollingsworth – portion 258 .....	216
10.8 Mary Ellen Connolly - portions 259 and 260, <i>Kensington Estate</i> again.....	217
10.9 Jaggard family holdings.....	220
10.10 Weisse family holdings – portions 277, 278, 279, <i>River View</i> .....	224
10.11 Edward Noah and Charles Whatmough – portion 152, fishing station .....	225
10.12 Illegal branding near Splitter's Creek .....	228
10.13 Snippets of neighbouring portions.....	229
Breaking up Queen's Park .....	231
11.1 Early changes under council control, 1889–1919 .....	231
11.2 Cotton ginnery .....	239
11.3 Power stations and new layouts, 1930 onwards.....	240
Black Ball Flat, John Taylor's estate .....	247
12.1 Taylor's ownership and subsequent sales .....	247
12.2 Major alterations in the road to Yeppoon .....	249
12.3 Other snippets about the estate .....	251
Infrastructure and institutions .....	253
13.1 North Rockhampton municipal precinct.....	253
13.2 Regulations concerning provisional schools.....	256
13.3 Glenmore State School .....	256
13.4 The Separation Movement.....	262
13.5 School reserve, Yaamba Road .....	264
13.6 Parkhurst State School .....	266
13.7 Park Avenue State School .....	269
13.8 Methodist Church, Glenmore Road .....	277
13.9 Other mainstream denominations .....	279
13.10 St George's Orphanage .....	279
13.11 Council-controlled infrastructure.....	279
13.12 Council restructure and merger.....	284
13.13 Rifle ranges.....	289
13.14 Proposed aerodromes.....	292
13.15 American army camps during World War Two .....	300
13.16 Park Avenue and Glenmore from the air .....	302
13.17 Later bridges and barrages .....	303
13.18 University precinct.....	304
Modern landmarks .....	307
14.1 Yaamba Road, formerly Main Yaamba Road.....	307
14.2 Alexandra Street, formerly Upper Glenmore Road .....	308
14.3 Glenmore Road, formerly Lower Glenmore Road .....	308
14.4 Norman Road, formerly Old Yaamba Road .....	310
14.5 Main Street, formerly Park Avenue.....	311
14.6 Richardson Road, formerly Myrtle Street.....	311
14.7 Farm Street.....	312
Appendix A. Known transfers at <i>Eton Vale</i> , 1862–1886 .....	313
Appendix B. Selected petitioners.....	313
Central Queensland Separation, 1890 .....	313
North Rockhampton ward system, 1914 .....	316
Appendix C. Selected electoral rolls.....	318
1894 Electoral district of Rockhampton North.....	318
Appendix D. Selected directories.....	321

1894 Post Office directory: North Rockhampton .....	321
1910–1911 Post Office directory: Park Avenue and Glenmore .....	323
1919–1920 Post Office directory: Parkhurst .....	325
Appendix E. Registration of Aliens, 1913 .....	326
Appendix F. Selection of fallen soldiers, 1914–1918 .....	326
Appendix G. Tenants in Queen’s Park .....	327
August 1910 – December 1919 .....	327
June 1936 .....	329
July 1938 .....	330
January 1941 .....	332
Appendix H. Sites used by armed forces, 1942–1945 .....	333
Appendix I. School enrolments .....	334
Glenmore State School – foundation pupils, October 1889 .....	334
Glenmore State School – those who waited until the new year, start of 1890 .....	335
Glenmore State School – selected pupils in later years, 1891 onwards .....	335
Park Avenue State School – foundation pupils, 11 October 1901 .....	336
Park Avenue State School – selected pupils in later years .....	337
Miscellaneous other enrolments .....	338
Appendix J. Sample street name changes .....	338
Appendix K. The Utopia’s jubilees .....	340
Appendix L. The Schalch diaspora .....	341
Background .....	341
Carl Heinrich Schalch (1873–1932) .....	341
Emil Ernst Schalch, later known as Charles Edwin Slater (1874–1945) .....	342
Fritz Schalch, later known as David Roy Slater (1877–1962) .....	345
Amelia (Emily) Schalch, later known as Maud Johnston (1880–1966) .....	347
Annie Olga Schalch (b. 1882) .....	348
Appendix M. Paulina Keller’s family .....	355
Otto (1890–1958) .....	355
Emma (1892–1966) .....	355
Edith Annie, known as Ida and Idi (1896–1955) .....	355
William, known as Billy (1899–1954) .....	356
Charles Ernest (1902–1963) .....	356
Appendix N. Measurement conversions .....	357
Bibliography .....	358
Abbreviations used in notes .....	367
Notes .....	368
Index .....	420
About the author .....	449
Abridged list of author’s publications and broadcasts .....	450



## List of illustrations

Figure 1.	<i>Map of Australian east coast showing new pastoral districts, c.1850</i>	xviii
Figure 2.	<i>Maurice Charles O'Connell (1812–1879)</i>	1
Figure 3.	<i>Map of new counties in Port Curtis district, 1854</i>	2
Figure 4.	<i>Map of Glenmore Run, c.1868</i>	6
Figure 5.	<i>Photograph of Macartney's hut at Old Glenmore</i>	8
Figure 6.	<i>Sir Roderick Murchison and Sir Charles Nicholson</i>	11
Figure 7.	<i>Map of early land sales in parish of Archer</i>	12
Figure 8.	<i>Table showing land sales in parish of Archer, 26 March 1860</i>	13
Figure 9.	<i>Table showing land sales in parish of Archer, 22 January 1861</i>	13
Figure 10.	<i>Table showing land sold in parish of Archer, 13 January 1862</i>	15
Figure 11.	<i>Table showing land sale near Limestone Creek, 14 July 1862</i>	17
Figure 12.	<i>Map of portions 112 to 123, parish of Murchison</i>	18
Figure 13.	<i>Henry Edward King, Andrew Bertram and Robert Miller Hunter</i>	21
Figure 14.	<i>Eton Vale properties held by Smith &amp; Burnet at dissolution, 31 December 1862</i>	22
Figure 15.	<i>Balance sheet of insolvent Thomas Burnet, 15 April 1863</i>	23
Figure 16.	<i>Purchasers from Archibald Douglas, portion 121, c.1863</i>	24
Figure 17.	<i>Balance sheet of insolvent Edwin John Smith, 26 October 1864</i>	26
Figure 18.	<i>Map of portions available around Glenmore Station, September 1864</i>	27
Figure 19.	<i>Table showing land sale near Glenmore Station, 15 September 1863</i>	28
Figure 20.	<i>Map of portions 119 and 120, parish of Murchison</i>	29
Figure 21.	<i>Table showing all owners and occupiers at Eton Vale, 1892</i>	31
Figure 22.	<i>Signatures of early Glenmore residents</i>	31
Figure 23.	<i>Ordinary and able seamen in crew list of Utopia, 23 July 1862</i>	32
Figure 24.	<i>Utopia crewmen admitted to Brisbane Gaol, 1862</i>	32
Figure 25.	<i>Comparison of Utopia passenger tallies, 1862</i>	36
Figure 26.	<i>State of H. M. Gaol, Brisbane, week ending 3 January 1863</i>	38
Figure 27.	<i>Map of Splitter's Creek locality, parish of Murchison, May 1864</i>	39
Figure 28.	<i>Map of Queen's Park vicinity, parish of Murchison, June 1871</i>	40
Figure 29.	<i>Map of land offered for sale, September 1864</i>	42
Figure 30.	<i>Table showing Crown land sold, 26 September 1864</i>	42
Figure 31.	<i>Photograph of Charles Haynes</i>	43
Figure 32.	<i>Assets of deceased John Alexander Watt, 1865</i>	45
Figure 33.	<i>Map showing major terrain in parish of Murchison, December 1864</i>	47
Figure 34.	<i>Table showing land sold, 28 December 1864</i>	49
Figure 35.	<i>Map of land purchased by John Taylor, 1864</i>	50
Figure 36.	<i>Map of new land released in August 1865</i>	51
Figure 37.	<i>Reverend James Carson</i>	52
Figure 38.	<i>Photograph of Sue Yek</i>	53
Figure 39.	<i>Table of purchasers after the auction of 21 January 1880</i>	54
Figure 40.	<i>Map of land between Black Ball Flat and Berserker foothills</i>	55
Figure 41.	<i>Chart of Joseph Cowland Orbell's children</i>	56
Figure 42.	<i>Map of cemetery precinct, 1876</i>	57
Figure 43.	<i>Chart showing immediate Birkbeck family</i>	58
Figure 44.	<i>Table showing Birkbeck's land purchases to September 1866</i>	58

Figure 45.	<i>Signatures of Samuel Bradford Birkbeck</i>	60
Figure 46.	<i>Signatures of the Birkbeck family</i>	64
Figure 47.	<i>Diagram of selected family connections</i>	65
Figure 48.	<i>Chart of selected Dick descendants</i>	65
Figure 49.	<i>Chart of selected Bligh descendants</i>	66
Figure 50.	<i>Chart of selected Milford and Feez descendants</i>	67
Figure 51.	<i>Table showing range of birth places and dates of John York</i>	69
Figure 52.	<i>Photograph of Bowen and Port Denison, c.1867</i>	69
Figure 53.	<i>Ownership at Eton Vale, portions 119 and 120, 1868</i>	70
Figure 54.	<i>Table showing Birkbeck cattle bought by Alexander Gunn, 1866–1867</i>	71
Figure 55.	<i>Chart of selected Black descendants</i>	72
Figure 56.	<i>Chart of McConnell and Bradley connection</i>	73
Figure 57.	<i>Chart showing selected offspring of Samuel Part</i>	74
Figure 58.	<i>Photograph of John Wadeson Cragg, c.1887</i>	75
Figure 59.	<i>Overview map of selections discussed</i>	76
Figure 60.	<i>Sketch of Dennis Cifuentes' distinctive earmark, 1872</i>	77
Figure 61.	<i>Table showing all owners in portion 248A, 1916</i>	78
Figure 62.	<i>Chart showing selected offspring of Brookfield family</i>	78
Figure 63.	<i>Possible photograph of John York</i>	83
Figure 64.	<i>Children of John and Margaret York</i>	83
Figure 65.	<i>Birth registration lapses of John and Margaret York's children</i>	84
Figure 66.	<i>Chart showing children of John and Margaret York</i>	84
Figure 67.	<i>Map of York family holdings</i>	87
Figure 68.	<i>Photograph of the York sisters</i>	88
Figure 69.	<i>Photograph of Emily Dean and Christina Wade, 15 June 1957</i>	89
Figure 70.	<i>Ken Johnson and Charlie York at Kemp Beach, February 1944</i>	90
Figure 71.	<i>Map of George Silas Curtis' Norman Road holdings, c.1892</i>	93
Figure 72.	<i>Sketch of John Moloney's distinctive earmark, 1872</i>	95
Figure 73.	<i>Chart showing selected offspring of Herman and Margaret Werner</i>	97
Figure 74.	<i>Table showing Herman Werner's heirs and heiresses, 1911</i>	98
Figure 75.	<i>Sketch of Sandy Gunn's distinctive earmark, 1872</i>	99
Figure 76.	<i>Early selections successfully taken up by Gunn family</i>	99
Figure 77.	<i>Map of Gunn family holdings in parish of Murchison</i>	100
Figure 78.	<i>Chart showing children and grandchildren of Sandy and Jane Gunn</i>	101
Figure 79.	<i>Chart of Richter family of Mount Hedlow Road</i>	104
Figure 80.	<i>Map of Selection 1371, 1876</i>	106
Figure 81.	<i>Prickly pear selection 2941, 1913–c.1918</i>	108
Figure 82.	<i>Map of T. M. Black's family holdings above Black Ball Flat</i>	110
Figure 83.	<i>Chart of Moore and Clark families of Norman Road</i>	111
Figure 84.	<i>Signatures of people along Old Yaamba and Mount Hedlow Roads</i>	112
Figure 85.	<i>Map of former Selection 201, Parkhurst</i>	113
Figure 86.	<i>Table showing purchasers in former Selection 201, 1883–1886</i>	114
Figure 87.	<i>Signatures of selected holders at Parkhurst</i>	115
Figure 88.	<i>Chart of early Harp and Timm families</i>	116
Figure 89.	<i>Summary of passengers on Fritz Reuter to Rockhampton, 1877</i>	117
Figure 90.	<i>Diagram of selected Harp family connections</i>	118

Figure 91.	<i>Chart of Schelk family from Germany</i>	118
Figure 92.	<i>Chart of Schalch family from Switzerland</i>	120
Figure 93.	<i>Transfers pertaining to Heinrich Schreck's landholdings, 1883–1885</i>	121
Figure 94.	<i>Known Schalch family homes in Rockhampton, 1877–1903</i>	122
Figure 95.	<i>Map showing selected Schalch homes, Rockhampton, 1878–1902</i>	123
Figure 96.	<i>Table of known school enrolments of Henri Schalch's children, 1887–1897</i>	125
Figure 97.	<i>Julia Schalch at Glenmore State School, c.1901</i>	128
Figure 98.	<i>Photograph of Henri Schalch's plot (on right), North Rockhampton Cemetery</i>	129
Figure 99.	<i>Photograph of Yaamba Road horse bus</i>	133
Figure 100.	<i>Wade family in Somerset, 1899</i>	135
Figure 101.	<i>Table of Frank Wade's oceanic voyages, c.1890–c.1902</i>	135
Figure 102.	<i>Photograph of Frank Wade in his cab, c.1926</i>	136
Figure 103.	<i>Photographs of Frank and Christina Wade</i>	137
Figure 104.	<i>Ted Wade and Ivy Wade, c.1929</i>	138
Figure 105.	<i>Chris Johnson at the rifle range</i>	139
Figure 106.	<i>Chart showing selected Winders and Windress descendants</i>	140
Figure 107.	<i>Chart of Cole family of Yorkshire</i>	143
Figure 108.	<i>Chart of Smith family of North Yorkshire, Rockhampton and Glenmore</i>	144
Figure 109.	<i>Frances Smith, c.1912</i>	144
Figure 110.	<i>Typical memorial notices for Mathew and Frances Smith of Glenmore</i>	145
Figure 111.	<i>Chart of connections between Winders, Schalch and Keller families</i>	146
Figure 112.	<i>Chart of Smith family of Glenmore Road</i>	147
Figure 113.	<i>Aaron Smith, c.1925, and Julia Smith, c.1958</i>	148
Figure 114.	<i>Aaron and Minnie Smith, c.1945; Carl Smith and Rose Smith, c.1916</i>	148
Figure 115.	<i>Photograph of Smith plots in compartment 17, North Rockhampton Cemetery</i>	149
Figure 116.	<i>Glen Smith, 1936; Jack Smith, 1936; Ron and Daisy Barnes, 1948</i>	150
Figure 117.	<i>Chart of selected Hopkins, Foreman, Jones and Dean marriages</i>	151
Figure 118.	<i>Chart showing selected York, Jones, Dean and Foreman identities</i>	152
Figure 119.	<i>Chart of selected Gent and Pardy descendants</i>	152
Figure 120.	<i>Chart of Tung Yeen (Wing Wah) family</i>	153
Figure 121.	<i>Photograph of Young, Tung Yeen, Brookfield and Wing Wah plots</i>	154
Figure 122.	<i>Table showing all owners at Eton Vale, 1892 and 1916</i>	155
Figure 123.	<i>Map of portion 112, parish of Murchison</i>	156
Figure 124.	<i>Table showing purchasers in portion 112 from Henry Edward King</i>	156
Figure 125.	<i>James Stewart and his wife Jane Margaret, née Finney</i>	157
Figure 126.	<i>Table showing all owners in portion 121, 1892 and 1916</i>	159
Figure 127.	<i>Map of portion 121, parish of Murchison</i>	160
Figure 128.	<i>Photograph of Edward Seymour Lucas</i>	161
Figure 129.	<i>Owners in portion 123, parish of Murchison, 1892 &amp; 1916</i>	162
Figure 130.	<i>Smallholders in portion 123, parish of Murchison, 1892</i>	163
Figure 131.	<i>Sales in portion 123 to recover unpaid rates, 1911</i>	164
Figure 132.	<i>Chart of Fritz Klüver's children and grandchildren</i>	164
Figure 133.	<i>Signatures of selected holders at Glenmore</i>	166
Figure 134.	<i>Map of portion 238, parish of Murchison, after 1911</i>	168
Figure 135.	<i>Purchasers in portion 238 from George Silas Curtis, 1882–1886</i>	169
Figure 136.	<i>Known purchasers in portion 237, parish of Murchison, 1885–1888</i>	170

Figure 137.	<i>Plan of portion 237, Park Avenue, September 1888</i>	171
Figure 138.	<i>Owners in portion 237, parish of Murchison, 1892 and 1916</i>	172
Figure 139.	<i>At the Rockhampton Show, c.1959</i>	173
Figure 140.	<i>Map of portion 154, parish of Murchison</i>	174
Figure 141.	<i>Owners in portion 154, parish of Murchison, 1892</i>	175
Figure 142.	<i>Chart of Cheshire family</i>	175
Figure 143.	<i>Map of portion 157, parish of Murchison, c.1892</i>	178
Figure 144.	<i>Owners in portion 157, parish of Murchison, 1892 &amp; 1916</i>	179
Figure 145.	<i>Owners in portion 158, parish of Murchison, 1920</i>	180
Figure 146.	<i>Map of portions 159 and 160, parish of Murchison</i>	181
Figure 147.	<i>Owners in portion 159, parish of Murchison, 1920–1936</i>	182
Figure 148.	<i>Chart of selected Walls descendants</i>	183
Figure 149.	<i>Map of portions 236 and 162, parish of Murchison</i>	184
Figure 150.	<i>Map of George Kerr’s freeholdings</i>	185
Figure 151.	<i>Chart of selected Halberstater descendants</i>	186
Figure 152.	<i>William George Thompson (1863–1953)</i>	187
Figure 153.	<i>Map of portion 161, parish of Murchison</i>	188
Figure 154.	<i>Chart of selected Millan descendants</i>	188
Figure 155.	<i>Owners in portion 161, parish of Murchison, 1925 &amp; 1930</i>	189
Figure 156.	<i>Carl, Lyn and Evie Smith, 15 June 1957</i>	190
Figure 157.	<i>Signatures of holders in upper Park Avenue</i>	192
Figure 158.	<i>Selected Thornton, Morris, Machefer, Elkington and Connolly connections</i>	194
Figure 159.	<i>Map of Morris and Connolly freeholdings in parish of Murchison</i>	195
Figure 160.	<i>Chart of selected Connolly–Johnston–Morris marriages</i>	195
Figure 161.	<i>Owners in portion 261, parish of Murchison, 1916 &amp; 1920</i>	198
Figure 162.	<i>Map of portions 244, 245 and 246, parish of Murchison</i>	199
Figure 163.	<i>Owners in Queen’s Park Estate, parish of Murchison, 1892</i>	199
Figure 164.	<i>Photograph of Welch family outside shop, c.1905</i>	201
Figure 165.	<i>Chart of selected Welch and Jones descendants</i>	202
Figure 166.	<i>Owners in Queen’s Park Estate, parish of Murchison, 1916</i>	203
Figure 167.	<i>Owners in Queen’s Park Estate, parish of Murchison, 1936</i>	205
Figure 168.	<i>Owners in portion 244/245, 1925</i>	206
Figure 169.	<i>Photograph of Chris and Margaret Johnson, 15 June 1957</i>	207
Figure 170.	<i>Owners in portion 244/245, 1936</i>	208
Figure 171.	<i>Four generations in Kime family, July 1962</i>	208
Figure 172.	<i>Jack and Alma Wilson, Ced and Nell Hoffmann, 15 June 1957</i>	209
Figure 173.	<i>Map of portions 241, 242 and 243, parish of Murchison</i>	210
Figure 174.	<i>Owners in Preston Estate, parish of Murchison, 1892</i>	210
Figure 175.	<i>Dunlop Bridge across Moore’s Creek, Glenmore Road, February 1954</i>	212
Figure 176.	<i>Kate and Ada Wing Wah</i>	212
Figure 177.	<i>Map of portion 270, parish of Murchison</i>	213
Figure 178.	<i>Purchasers in Kensington Estate, parish of Murchison, 1881</i>	213
Figure 179.	<i>Map of portions 247, 248, 255 and 256, parish of Murchison</i>	214
Figure 180.	<i>Purchasers in portions 255 and 256, parish of Murchison, 1881</i>	214
Figure 181.	<i>Purchasers in portions 247 and 248, parish of Murchison, 1881</i>	215
Figure 182.	<i>Signatures of people downriver of Macalister Street</i>	216

Figure 183.	<i>Map of portions 259 and 260, parish of Murchison</i>	218
Figure 184.	<i>Owners in portions 259 and 260, parish of Murchison, 1892 and 1916</i>	219
Figure 185.	<i>George Silas Curtis, c.1895</i>	219
Figure 186.	<i>Map of Jaggard freeholdings</i>	220
Figure 187.	<i>Jaggard's Murchison properties rented to others, 1892</i>	221
Figure 188.	<i>Result of valuation appeals by Josiah Jaggard, 16 August 1895</i>	221
Figure 189.	<i>Map of portion 250, parish of Murchison</i>	222
Figure 190.	<i>Josiah Jaggard outside 211 Kent Street, c.1926</i>	223
Figure 191.	<i>Josiah Jaggard's Murchison properties to be auctioned, 23 February 1939</i>	224
Figure 192.	<i>Photograph of Emil Oscar Weisse (c.1844–1933)</i>	225
Figure 193.	<i>Chart showing selected Weisse, Whatmough, Young and Richter connections</i>	226
Figure 194.	<i>Roadway through portion 152, parish of Murchison, 1903</i>	227
Figure 195.	<i>Signatures of holders upstream of Macalister Street</i>	230
Figure 196.	<i>Photograph of Alexander Railway Bridge</i>	232
Figure 197.	<i>Table showing known Queen's Park residents, 1905</i>	233
Figure 198.	<i>Broad overview of Queen's Park with planned railway, 1910</i>	234
Figure 199.	<i>Table summarising Arthur Mellor's reports, February – July 1911</i>	235
Figure 200.	<i>Queen's Park residential subdivisions, 1913</i>	237
Figure 201.	<i>Table summarising new leases, 27 August 1915</i>	238
Figure 202.	<i>Cotton ginnery land, c.1923</i>	239
Figure 203.	<i>Queen's Park residential subdivisions, 1941</i>	242
Figure 204.	<i>Queen's Park overview, 1941</i>	243
Figure 205.	<i>Table summarising special leases in proposed power station area, June 1946</i>	244
Figure 206.	<i>Power house in Queen's Park, 1 September 1955</i>	246
Figure 207.	<i>Signatures of selected residents of Queen's Park</i>	246
Figure 208.	<i>Table showing Black Ball Flat land auctioned on 21 March 1908</i>	248
Figure 209.	<i>Signature of Owen Daniel, portion 171</i>	248
Figure 210.	<i>Map of Black Ball Flat purchases, 5 February 1913</i>	249
Figure 211.	<i>Map showing road through Black Ball Flat, c.1910–1920</i>	250
Figure 212.	<i>Map of North Rockhampton's northern municipal boundaries</i>	252
Figure 213.	<i>Original corporate seal of North Rockhampton, 1883</i>	252
Figure 214.	<i>Municipal sector of North Rockhampton, c.1890</i>	255
Figure 215.	<i>Children likely to attend Glenmore State School, 1887</i>	257
Figure 216.	<i>Children of Joseph and Sarah Olive</i>	258
Figure 217.	<i>Distances to proposed Glenmore and current schools, 1887</i>	259
Figure 218.	<i>Class distribution by age, Glenmore State School, 1889</i>	260
Figure 219.	<i>Vicinity of second Glenmore State School, 1919</i>	262
Figure 220.	<i>Tally of petitioners for Separation, November 1890</i>	263
Figure 221.	<i>Splitting portion 207 into four smaller parcels, parish of Murchison</i>	265
Figure 222.	<i>Table of purchasers opposite cemetery, 27 September 1898</i>	265
Figure 223.	<i>Children likely to attend Parkhurst State School, June 1899</i>	267
Figure 224.	<i>Distances to proposed Parkhurst and current schools, 1899</i>	267
Figure 225.	<i>Tenders submitted for construction of Parkhurst State School, February 1900</i>	268
Figure 226.	<i>Construction costs, Parkhurst State School, April 1900</i>	268
Figure 227.	<i>Summarised family locations for Park Avenue State School, 1899</i>	269
Figure 228.	<i>Distances to proposed Park Avenue and current schools, 1899</i>	270

Figure 229.	<i>Boys nominated to attend Park Avenue State School, June 1899</i>	271
Figure 230.	<i>Husbands and children of Wilhelmina Nees</i>	271
Figure 231.	<i>Girls nominated to attend Park Avenue State School, June 1899</i>	272
Figure 232.	<i>Families near proposed sites of Park Avenue State School, 1899</i>	273
Figure 233.	<i>Sketch of original Park Avenue State School</i>	274
Figure 234.	<i>Tenders submitted for construction of Park Avenue State School, March 1901</i>	275
Figure 235.	<i>Tally of foundation pupils at Park Avenue State School, 11 October 1901</i>	275
Figure 236.	<i>Families petitioning against headteacher, 7 July 1936</i>	277
Figure 237.	<i>Owners along Upper Glenmore Road, August 1912</i>	282
Figure 238.	<i>Map showing gullies and swamps affecting Upper Glenmore Road, 1912</i>	283
Figure 239.	<i>Photograph of Park Avenue bus</i>	284
Figure 240.	<i>Area and rateable value of proposed wards, January 1914</i>	285
Figure 241.	<i>Results of ordinary vacancy election, March 1917</i>	287
Figure 242.	<i>Candidates for merged council, March 1919</i>	289
Figure 243.	<i>Map showing vicinity of portion 21v, parish of Archer</i>	290
Figure 244.	<i>Map of Norman Road rifle range, c.1942</i>	291
Figure 245.	<i>Winners at rifle club meet, c.1951</i>	291
Figure 246.	<i>Map of proposed aerodrome sites, parish of Murchison</i>	292
Figure 247.	<i>Sketch of Augenson's site one for aerodrome, December 1929</i>	297
Figure 248.	<i>Sketch of Augenson's site two for aerodrome, December 1929</i>	298
Figure 249.	<i>Photograph of Rockhampton Aerial Services Ltd hangar, Connor Park</i>	299
Figure 250.	<i>Map of sites used by armed forces, 1942–1945</i>	300
Figure 251.	<i>Map showing army layout of portions 237B &amp; 249A, 1942</i>	301
Figure 252.	<i>Park Avenue and Glenmore from the air, c.1948–1955</i>	302
Figure 253.	<i>Original and second Fitzroy River Bridges, December 1954</i>	303
Figure 254.	<i>Signatures of assorted identities</i>	305
Figure 255.	<i>Combined map and satellite view of university district, 2013</i>	306
Figure 256.	<i>Wade family's house relocated at Struck Oil, 2010</i>	309
Figure 257.	<i>Former Methodist Church on Glenmore Road, 23 August 2013</i>	310
Figure 258.	<i>Photograph of Utopia jubilee, 6 November 1912</i>	340
Figure 259.	<i>Comparison between Charles Edwin Slater and Emil Ernst Schalch</i>	345
Figure 260.	<i>Signatures of Charles Edwin Slater</i>	345
Figure 261.	<i>Comparison between David Roy Slater and Fritz Schalch</i>	346
Figure 262.	<i>Signature of David Roy Slater</i>	346
Figure 263.	<i>Signature of Emily Schalch</i>	347
Figure 264.	<i>Photograph of Schalch reunion, July 1962</i>	348
Figure 265.	<i>Signatures of Ding Gah and Annie Martin</i>	350
Figure 266.	<i>Description of Ding Gah, H. M. Prison Stewart's Creek (Townsville), 1903</i>	350
Figure 267.	<i>Descriptions of Donald Fritz Ding Gah, 1910–1928</i>	352
Figure 268.	<i>Photographs of Donald Fritz Ding Gah (Schalch)</i>	353
Figure 269.	<i>Left thumbprint of Donald Fritz Ding Gah, 1928</i>	355
Figure 270.	<i>Photograph of Wilhelmsen family plot, North Rockhampton Cemetery</i>	356
Figure 271.	<i>Temperature conversion graph</i>	357

## Acknowledgments

This time around, I begin by acknowledging the collective memories of local residents whose families have lived and worked in Park Avenue, Glenmore and Black Ball Flat for several generations and developed a strong understanding of their history. Although relatively few of their personal anecdotes feature in this book, those stories provided inspiration, guided my research and created enduring undertones for the factual presentation. These folk include several who have already passed away, such as my father Ken Johnson, grandparents Chris Johnson, Margaret Johnson and Glen Smith, great-aunt Ivy Wade and great-uncle George Wade. Undoubtedly their experiences and knowledge were aided by their own families and friends who preceded them. It is sad they were not able to see the finished product. More recent people I would like to thank include my mother Dell Johnson and Auntie Daisy Barnes.

I would also like to thank the foresight of archives, libraries and repositories, such as Central Queensland Family History Association in Park Avenue, Rockhampton and District Historical Society in North Rockhampton, CQUniversity Australia Library (Capricornia Collection) on Black Ball Flat, Rockhampton Regional Library, Queensland State Archives at Runcorn, National Archive of Australia at both Cannon Hill and North Melbourne, Public Record Office of Victoria in North Melbourne and John Oxley Library in South Brisbane. Desk and retrieval staff at these archives and libraries proved to be most helpful, courteous and friendly to ensure I could be head-down-tail-up during my visits. Thanks go to Kelli, Jane, Shranthi, Alison, Robert, Kevin, Diane, John and others at those facilities. John F, Fay, Kevin W, Karl, Beth, Marion, John H, Carmel and Kelli patiently tolerated my breeze-in visits, not always to research but often to escape the keyboard, purge recent topics and mull over current thoughts-in-progress. On some of these occasions, Rob Macfarlane too shared his knowledge of early personalities and places. There have been others too, generous people who provided assistance, guidance and patience. They know who they are and are probably grateful for not being named.

After all is said and done, thanks especially go to my immediate family who generously extended the patience needed while I sorted, compiled and tested tens of thousands of source documents. In particular, my mother's memory of early events and anecdotes proved useful on many occasions. She has been closely involved with Park Avenue's characters her whole life and, since a couple of years ago, has been the longest resident in her street.

Perhaps without realising it, all these people helped steer my thoughts and research toward the unreachable goal of completeness and correctness. Any remaining mistakes, misinterpretations and misrepresentations are mine.

## Preface

Park Avenue, Glenmore and Black Ball Flat have long played a major role in the development of Rockhampton. Now and in the past, they have accommodated major landmarks including primary schools, secondary schools, Central Queensland's only university, the major road bridge across the Fitzroy River, Australia's major national highway, the northern railway line, the Fitzroy River Barrage, access to coastal beach resorts, proposed aerodromes, Rockhampton's major shopping centre, its crematorium, a cemetery, botanical gardens, heritage centres, several former cinemas, its current cinema complex, emergency services, major retail centres and many others. Here people get on with life and, in doing so, may be unaware of or overlook historical aspects which guided the evolution of their current lifestyles.

The names Park Avenue and Glenmore remain with us today, but Black Ball Flat has been replaced by a collection of more recent titles such as Red Hill, Oasis Gardens, Norman Gardens and numerous other residential estates. In geographical terms, this presentation mainly covers the district between Moore's Creek and Limestone Creek near Parkhurst and from the river to the foothills of the Berserker Range, but includes contextual background beyond this zone. In days gone by, the whole district was little more than brigalow scrub and melon holes, which led to a popular belief among people in more fashionable parts of Rockhampton that this area north of Moore's Creek was worthless and a laughable place to make a life for oneself. Developments since the 1980s have slowly turned this untrue label on its head. The new is slowly but surely replacing the old, so its history must be documented before it is forgotten and lost.

Development involves gradual change through barely-noticeable phases and can differ for neighbouring districts. This historical account follows a progression from initial settlement at Rockhampton, establishment and subsequent reductions of large grazing properties, introduction of settlers and largeholders, subdivision for smallholders and establishment of local institutions such as schools, churches, industry, commerce and social facilities. It explores the land and its people, always with a view to placing each in context with the other. The main focus is upon the period between the 1850s and the 1920s, but the timeline extends in some instances through appropriateness and necessity to the current day.

History books conjure up all sorts of expectations in people's minds. In reality, they can include collections of facts, anecdotes, old maps, photographs, sketches and lists which document people, places and events. This book is biased toward the facts, rather than legends, and includes all of these features along with collections of signatures written by early residents. Hundreds of people lived in Park Avenue, Glenmore and Black Ball Flat during those early years, followed by thousands in more recent times. Not everyone is mentioned here, but many are, especially the families. The index contains almost 1400 surnames, which link to more than 3800 individual people.

Having described the basic intention of the book, how about what it is not? Most definitely, this is not a history of any one family, not even the Birkbecks who remain today one of the longest-standing European families in the district, although several such families are discussed in quite some depth whenever their contributions have been the most significant. Similarly this is not a history of either *Glenmore Run* or *Glenmore Station*, which the Birkbecks bought from an earlier lessee, although both the run and the station feature strongly in the early chapters. As a point of fact, *Glenmore Run* gave birth to practically all of North Rockhampton and therefore once incorporated Park Avenue, Glenmore and Black Ball Flat.

A most difficult expectation for historians to overcome is some readers' desire to find comprehensive coverage of "my grandfather" or "my great aunt Milly", who each apparently made the district what it is today. These readers have been brought up to believe their ancestors played a crucial role in the development of the whole district. Evidently this issue is stronger in Queensland than other places because the oldest residents now are only two or three generations after the first European settlers and the legends heard from their parents "could never be wrong". In each generation, the old legends are strengthening by word of mouth and family stories and frothed-up tales are becoming folklore. Future generations will be misinformed if the problem is not corrected. At some point, someone needs to set the record straight and remind people of the facts. This book



tries to achieve that goal. If it happens to reach the attention of the ill-informed people, perhaps they will discard it as utter nonsense because it does not fit their view of reality.

On a personal note, most of my life too has been spent in Park Avenue, Glenmore and Black Ball Flat. Numerous branches of my family have lived, studied, worked, died and been buried here since the 1860s. These places have been stamping grounds for me, both parents, three out of four grandparents, four out of eight great-grandparents, seven out of sixteen great-great-grandparents, one or two great-great-great-grandparents and an almost countless number of distant cousins. Networks of families such as ours continue to support and nurture the community.

The author acknowledges the special relationship between Aboriginal and Torres Strait Islander people and their traditional lands and waters, as well as their unique history and diverse culture, customs and circumstances. References here to *'land ownership'* reflect titles supported by prevailing governments and bear no relationship to anything else.

Aboriginal and Torres Strait Islander readers should be aware that this book contains names of people who have since passed away. A particular caution concerns one of the final appendices entitled *'Annie Olga Schalch'*, which names one such man who lived in Bowen in 1902. Similarly, in case its appearance unwittingly caused distress to his family, an 1887 photograph has been altered to remove the image of an unidentified deceased man. Otherwise, events are outlined here from an historical perspective without favour or prejudice to anyone, past or present.

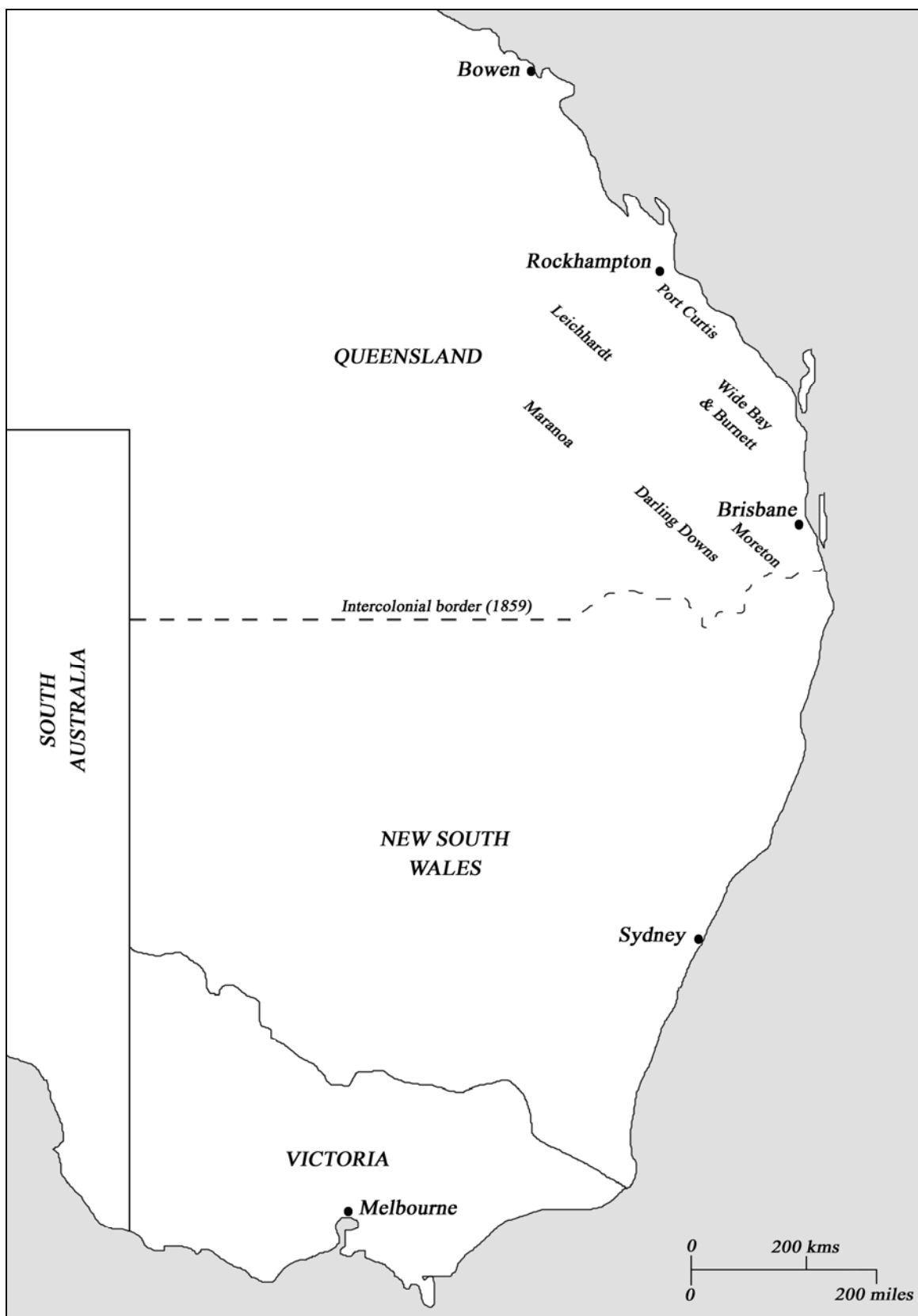


Figure 1. *Map of Australian east coast showing new pastoral districts, c.1850*

## Introduction – Laying the foundations

*'After having travelled over much of Europe, the magnificent waters of Keppel Bay, the beautiful rolling tide of the Fitzroy, without doubt formed the most charming prospects.'*

Sir Charles Nicholson (1808–1903), at a Rockhampton dinner on 10 December 1862.

### I.1 County of Livingstone

The early outline begins with the colony of New South Wales which once included the entire eastern seaboard of the Australian continent. Despite having its own government which met in Sydney, the colony was very much controlled by laws and acts passed by the Imperial parliament at Westminster. On 22 June 1842, Westminster passed a law known as *'An Act for regulating the sale of Waste Land belonging to the Crown in the Australian Colonies'*. On 11 January 1843, the New South Wales governor Sir George Gipps proclaimed this act would take effect immediately in each of the Australian colonies. The Act defined alienation of Crown land as its sale and conveyance according to its clear regulations and authorised the governor to act in place of the Crown in all matters. The Crown could reserve lands for public purposes such as public roads, military, worship, burial places, public quays and the like. Crown land to be sold must first be surveyed, provided it comprised no more than twenty thousand acres, and then offered at public auction. There would be town lots, suburban lots and country lots, depending on their proximity to settled areas. Quarterly auctions were subject to a standard upset price of £1 per acre, although the governor may alter that amount in particular circumstances. To administer these matters, the colonial secretary issued a set of updated procedures for applicants on 1 March 1843, but these proved too cumbersome as the colony expanded. A revised set of procedures issued on 8 March 1853 declared auctions beyond the Sydney district would be conducted by local Clerks of Petty Sessions under supervision of local Commissioners of Crown Lands and usually held at police offices. These commissioners would make details freely available for the public prior to the auctions. Yet another set of refinements was issued on 27 August 1853, mostly to expedite sales in pastoral districts.<sup>1</sup>

By April 1853, a rumour circulated around Sydney and Melbourne suggesting the government intended establishing a penal settlement at Port Curtis. It was an old rumour which had been simmering since at least 1850 and its basis was both simple and real. The New South Wales and Victorian colonies had been talking of closing the door to receiving convicts transported from Britain, so Westminster discussed the idea of opening a new northern penal colony at either Moreton Bay or Port Curtis. The 1853 rumour was scotched because new settlers had been gradually occupying the countryside as far north as Port Curtis and more were expected to follow, thus rendering it less suitable for a penal colony. However, the government sent a surveying party to select a place for a town and planned to appoint Captain Maurice Charles O'Connell as Resident Magistrate at the new settlement. The chief surveyor found an amply-deep harbour with two entrances, one at the north and one at the south, and laid out a town named Gladstone on Auckland Inlet.<sup>2</sup>

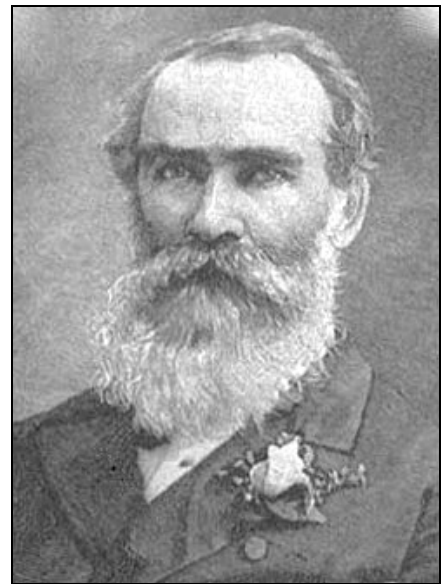


Figure 2. Maurice Charles O'Connell (1812–1879)

About 40 miles north of Port Curtis, the party found and named the large Fitz Roy River, which they believed probably drained the inland Mackenzie and Dawson Rivers. They announced the opportunity for enterprising people to open up the Fitz Roy's hinterland to pastoral interests. The river's name soon adopted the popular spelling *'Fitzroy'*.<sup>3</sup>

Acting upon preliminary reports from the surveying party, the governor established a chain of eight counties to reach the new northern districts. These counties included Clinton, Deas Thomson (named after the colonial secretary at the time), Livingstone, Palmerston, Leibig, Raglan, Pelham

and Flinders. The first three were classed as settled lands and therefore supposedly withheld from pastoral occupation and squatting. The remaining five counties were aggregated into the new district of Port Curtis, which was defined initially in 1854 as:<sup>4</sup>

*'Pastoral district of Port Curtis: Bounded on the north and east by the sea; on the south by the range forming the northern watershed of the Kolan River, to its junction with the range forming the northern watershed of the Burnett River, and by that range separating this district from that of Burnett and Wide Bay, to the junction of the range dividing the waters of Tunks' Creek from other tributaries of the Dawson; and on the west by the last mentioned range, and by a spur to the confluence of Kroombit Creek with Tunks' Creek, thence crossing Tunks' Creek by a spur northerly, and by the range forming the western watershed of Tunks' Creek, and thence by the range to the great northwest bend of the Fitz Roy River, separating this district from that of Leichhardt; and thence by features (to be determined) at an average distance of 30 miles from Herbert's Creek and Broad Sound, and extending northerly to meet Broad Sound at a small inlet in that part of the coast which trends westerly; excepting therefrom the counties of Clinton, Deas Thomson and Livingstone.'*<sup>5</sup>

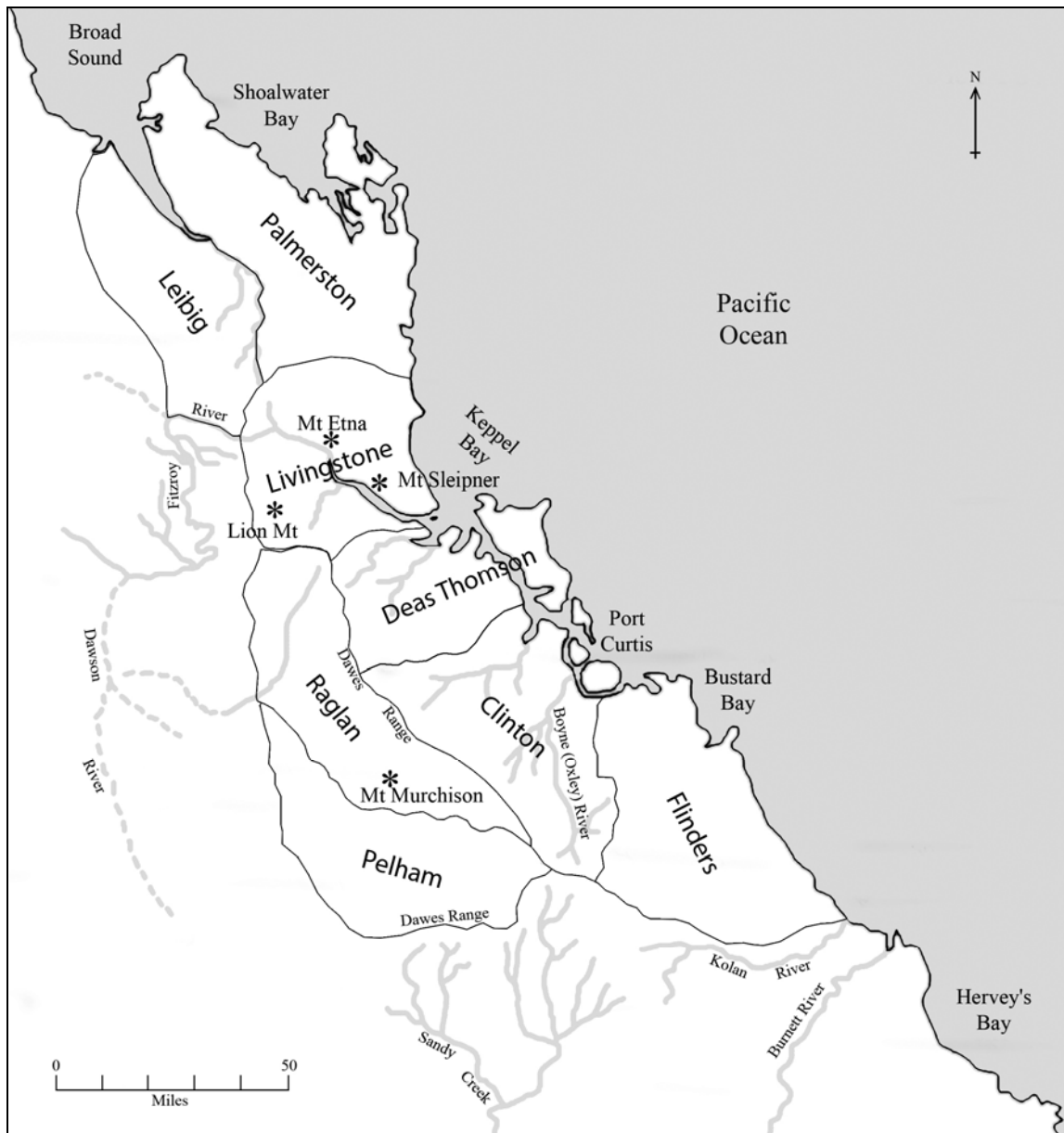


Figure 3. Map of new counties in Port Curtis district, 1854

The county of Livingstone was defined imprecisely as:

*'County of Livingstone: Bounded on the south by the range forming the southern watershed of the Fitz Roy River; on the west by the spur range from that range, terminating in the great northwest bend of the Fitz Roy River, by a small tributary to that river, and by one of its northern tributaries to the range forming its northern watershed; on the north by that watershed and by a range from that range, or by some other feature, easterly to the ocean; and on the east by the ocean.'*<sup>6</sup>

The Government Resident at Gladstone, the most northerly settlement in New South Wales, became Commissioner of Crown Lands for the Port Curtis pastoral district and supervised Crown lands in the three settled counties. As expected, Captain O'Connell was appointed to the role on 10 January 1854.<sup>7</sup>

Despite clear procedures for Crown land sales and strenuous cries of injustice, 80 town lots at Gladstone were offered for sale by auction at the Land Sales Room of the Colonial Treasury, Macquarie Street, Sydney, on 8 February 1854. A further sixteen town lots at Gladstone and 43 suburban lots in the surrounding district of Clinton were put up for public auction on the following day, 9 February. One may surmise the auction was held in Sydney, and not Gladstone itself, in the hope of attracting sufficient buyers, to encourage new settlers to the northern districts or perhaps to allow particular Sydney residents the first opportunity to take up land in Port Curtis. Of course, Brisbane residents felt the auction should have been held in their town instead. No-one thought to hold it in Gladstone itself.<sup>8</sup>

## **I.2 Rockhampton's early facilities (1853–1865)**

In terms of European settlement, Rockhampton's popular history began with discoveries by explorer Dr Ludwig Leichhardt and the subsequent arrival of his friends, the Archer brothers, from the Dawson Valley. After an initial scouting expedition in mid-1853, which was apparently a few months before the surveying party laid out Gladstone, the Archers returned in July 1855 with about 8000 sheep and a bunch of capable helpers. They occupied and soon established a run called *Gracemere* near a lagoon several miles southwest of the Fitzroy River. Without roads of any sort, they depended on sailing vessels to carry supplies, produce and manpower. Sea-going vessels could enter Keppel Bay and carefully pick their way upstream past partially-hidden sandbars until they reached a collection of large rocks which prevent navigation farther upstream. Drays and wagons were needed to haul the goods from the river to *Gracemere* itself. Within a couple of years, the township of Rockhampton was settled alongside the southwestern riverbank on the downstream side of those rocks to service the fledgling pastoral industry.

Another significant contributor to Central Queensland's early development was Sir Charles Nicholson, a mostly-absentee investor and landlord who regularly visited and often promoted the region. Whether first attracted by some stroke of chance or pure luck, he bought and held large chunks of land around Rockhampton. Who was he and what drew him to the Fitzroy? Born in Iburndale near Whitby in Yorkshire on 23 November 1808, he was the illegitimate son of Barbara Ascough. Using his mother's name, the lad was christened as Isaac Ascough. His father may have been named Nicholson, as young Isaac changed his name to Charles Nicholson before reaching adulthood. Perhaps with financial help from his uncle William Ascough, Nicholson graduated with a medical degree from Edinburgh University in 1833. Ascough was a ship's captain who accumulated wealth from transporting convicts to New South Wales some years previously and bought a fair bit of land in that colony. Within a couple of months of graduating, Nicholson worked his passage to Sydney as a ship's surgeon on the *James Harris* and set up practice near the Rocks. His uncle unfortunately drowned at sea near Sydney in 1836 and left most of his estate to the young doctor. Nicholson continued buying land throughout the colony and, on this basis, was elected to New South Wales' first Legislative Council in 1843. He was a keen benefactor and founder of the University of Sydney and served as its chancellor from 1854 until 1862. He was knighted in 1852 and raised to a baronetcy in 1859. Sir Charles travelled to Egypt and Europe in 1856–1857 and collected more than a thousand Egyptian, Roman and Etruscan artefacts which he subsequently donated to the university upon his return. Upon Queensland's separation in 1859, the new governor Sir George Ferguson Bowen especially requested Nicholson to serve on the new Legislative Council, which he did.<sup>9</sup>

Among his ambitious but lesser known pursuits, Sir Charles was a passionate advocate for the establishment of a national railway system to encourage transit and communication within the Australian colonies. In January 1854, he championed the idea of several systems connecting Sydney with the Gulf of Carpentaria, Melbourne and Adelaide through a hub at Bourke on the Darling River. A branch line would connect the Kennedy district with the newly-established Port Curtis district and Keppel Bay. Note these matters were discussed more than seven years before Burke and Wills died in their attempt to reach and return from an overland journey from Melbourne to the Gulf. A supporter of Nicholson's called William Henry Wells suggested a suitably large contribution of land from the New South Wales government, especially considering it had given a million acres of pastoral land to the *Australian Agricultural Company* in 1824 and proposed giving one-seventh of its territory to the Church of England. In a prophetic statement, Wells said the grand network would allow better access to the cheap labour available in India and China. This nation-building concept was well ahead of its time and has been regenerated and copied by numerous politicians in the ensuing 160 years.<sup>10</sup>

From June until September 1860, while Rockhampton was still very young, Sir Charles Nicholson toured the northern districts to gain firsthand knowledge of their features and resources. He had already heard good reports about the Rockhampton district, but was quite unprepared for the natural beauty he found there. He left Rockhampton on the steamer *Clarence* on Monday 1 October 1860 and returned to Brisbane with parliamentarians Mr Macalister and Mr Lilley. He planned to spend the next year in Sydney before heading over to England. As a direct result of his visit though, Sir Charles bought numerous portions of land on both sides of the Fitzroy River, some of which will be discussed shortly.<sup>11</sup>

The government employed surveyor Thomas Brecknall Yates and contractor Mr Porter to build a new wharf beside the town. No bridge spanned the river during the first 25 years, but a punt and two ferries carried passengers, goods and livestock between the two banks. A new road was built from the northern shore to Yaamba to supplement the existing road which passed on the southern side through the agricultural reserve and forded the river at Yaamba itself. In fact though, at least four different roads on the northside became, at different times, referred to as the road to Yaamba and these will be expanded upon in later sections.<sup>12</sup>

Two main methods of transport brought people to the district. There were no roads, only tracks, so relatively few people made the overland journey from Brisbane. Most people arrived instead by sea from southern ports. The districts north of Brisbane desperately needed manpower to develop industries, infrastructure and stability, so the government established a system of assisted immigration and favoured ships which brought passengers directly to the northern districts. The government-commissioned *Utopia* was the first ship to convey passengers from the British Isles directly to Keppel Bay. It arrived on the bay on 6 November 1862 and its 324 passengers were shuttled up the river on a smaller vessel five days later because the river was too silted. Previous ships made intermediate stops at Brisbane or Sydney and most of those passengers had disembarked there. Numerous ships followed in the *Utopia's* wake and caused a tremendous increase in the town's population. The government built a series of barracks to accommodate the anticipated influx of arrivals until they could secure employment and housing themselves. The first government-funded dredge was put to work on the Brisbane River, but northern ports were promised only one to share between themselves.<sup>13</sup>

The town's population grew significantly during its first few years. By January 1864, there were 3615 adults in the town itself and a further 1308 in the surrounding district. As such, Rockhampton and its immediate environs comprised about 8 percent of Queensland's adult population.<sup>14</sup>

The streets of the town itself were little more than tracks through gullies and typically still had trees growing amid them.<sup>15</sup>

Public buildings were needed, but the town's representatives found trouble extracting financial support from the Brisbane-based government. The first government school was opened on 18 November 1862, a week after the *Utopia* passengers arrived. The gaol near the corner of South and West Streets was eventually finished in December 1863, but then commandeered for railway purposes within a couple of years. The Post and Telegraph Office was begun in 1865. The first hospital on Quay Lane near the foot of Albert Street was replaced by another shortly after 1864. The School of Arts contained a library, encouraged the community's literary, philosophic and scientific advancement and hosted regular cultural events such as concerts and plays.<sup>16</sup>

Two main newspaper firms informed the local public of stories and announcements from near and far. The *Rockhampton Bulletin and Northern Queensland Advertiser* began operations in July 1861, but transformed into the *Rockhampton Bulletin and Central Queensland Advertiser* after only a couple of issues. It changed names again to *Rockhampton Bulletin* in 1872 and eventually *The Morning Bulletin* from 1878 onward. Its sister publication, the *Capricornian*, carried the same stories but added others of interest to the entire Central Queensland region. The *Northern Argus* began shortly after the *Bulletin*, but it too transformed into the *Daily Northern Argus* in the 1870s and petered out altogether around the turn of the century. In many cases, the *Argus* was more original, reliable and correct than its competitor. Other newspapers came and went, such as the *Central Queensland Herald*, the *Central Queensland Times*, the *Daily Record*, the *Evening News*, the *Rockhampton Temperance Advocate* and the *North Rockhampton Times and Blackall Electorate Advertiser*.<sup>17</sup>

A labour market coordinated employee hire at its East Street office. Men's wages ranged between £35 and £50 per annum in 1865, but some married couples managed to earn £60 per annum. Rockhampton's lower average wage and higher cost of living forced immigrants to remain. Very few could afford to relocate southward.<sup>18</sup>

When he visited Rockhampton on 27 September 1865 to inaugurate work for the western railway line, Governor Bowen described Rockhampton as a '*flourishing town of nearly five thousand inhabitants, with public buildings of every kind – churches, schools, a mechanics' institute, a post-office, a telegraph-office, and numerous banks and warehouses... I remark with great satisfaction in the wharves which line your noble river.*'<sup>19</sup>

The government dredge eventually began helping clear the river for ships from early October 1865, almost three years after similar work began on the Brisbane River.<sup>20</sup>

By 1865, Rockhampton boasted branches of the *Australian Joint Stock Bank*, *Bank of New South Wales*, *Union Bank of Australia* and *Bank of Queensland*. By the same time, Rockhampton boasted a riverside recreation field known as Queen's Park on the current site of Victoria Park. The grounds were used for picnics and festive occasions, such as the 24 May 1865 celebration of the anniversary of Queen Victoria's birthday. The day's activities included rowing races, foot races, sack races and jumping events. The Rockhampton Volunteer Band entertained the crowd throughout the day.<sup>21</sup>

Good quality bullocks sold for about £12 to £14, but inferior stock could be obtained for only £3 per head. About 1600 cattle were sold in one fortnight in late September 1865. Prime quality wethers sold at about 21s. to 24s. per head, but lesser types were available for about 13s. Working horses were in great demand. A team of four draughthorses with harness sold for £120, while a team of five without harness sold for £150. Average quality stock horses sold for about £9 per head.<sup>22</sup>

A higher cost of living in Rockhampton and other northern centres was encouraged by government and commercial policy. Government employees were paid only in Treasury notes, effectively promissory notes issued by the government for a specified value. These notes were not legal tender but forced upon the colony because the government was broke. Banks cashed the notes at par in Brisbane but at a 5 percent discount in other places to allow sufficient margin for transporting the paper to Treasury in Brisbane for redemption. Therefore, although the government paid the full value, its employees living away from Brisbane were taxed 5 percent upfront. Furthermore, this caused goods brought into regional Queensland to automatically cost 5¼ percent more than in Brisbane. These two factors, the government policy to pay its employees only in Treasury notes and the banks' policy to cash the notes at a 5 percent discount in regional Queensland, combined to produce a dreadful commercial collapse in the colony in 1866.<sup>23</sup>

### 1.3 Celebrating successful colonisation

On 26 January 1858, the seventieth anniversary of the settlement at Sydney Cove in New South Wales, a group of about 160 men attended a celebration at the *Albion Tavern* in London. Sir Charles Nicholson chaired the meeting with the help of William Archer, father of the pastoralist brothers who squatted and settled throughout Central Queensland. At least three guests, namely Sir Roderick Murchison, Sir John Pakington and Chancellor of the Exchequer William Ewart Gladstone, had mountains, counties, parishes and towns named after them. Also present was Lord Alfred Churchill. Sir Charles Fitz Roy, the governor of New South Wales after whom the river was named, sent his apologies. The evening's programme comprised a lengthy series of speeches and

toasts lauding the royal family, the army and navy, the British government, the Australian goldfields and the very fact of having a seventieth anniversary to celebrate. Perhaps inflated by the torrent of alcohol consumed by the speakers, the populations of Sydney and Melbourne were noted to have reached 80,000 and 100,000 respectively. Of course, Melbourne's had been assisted by the recent Victorian goldrushes. Adelaide and Hobart were expected to follow suit, but Brisbane remained a relatively sleepy place. A strong sense of empire and overlordship underscored each speech, which was only to be expected from a celebration of British colonisation.<sup>24</sup>

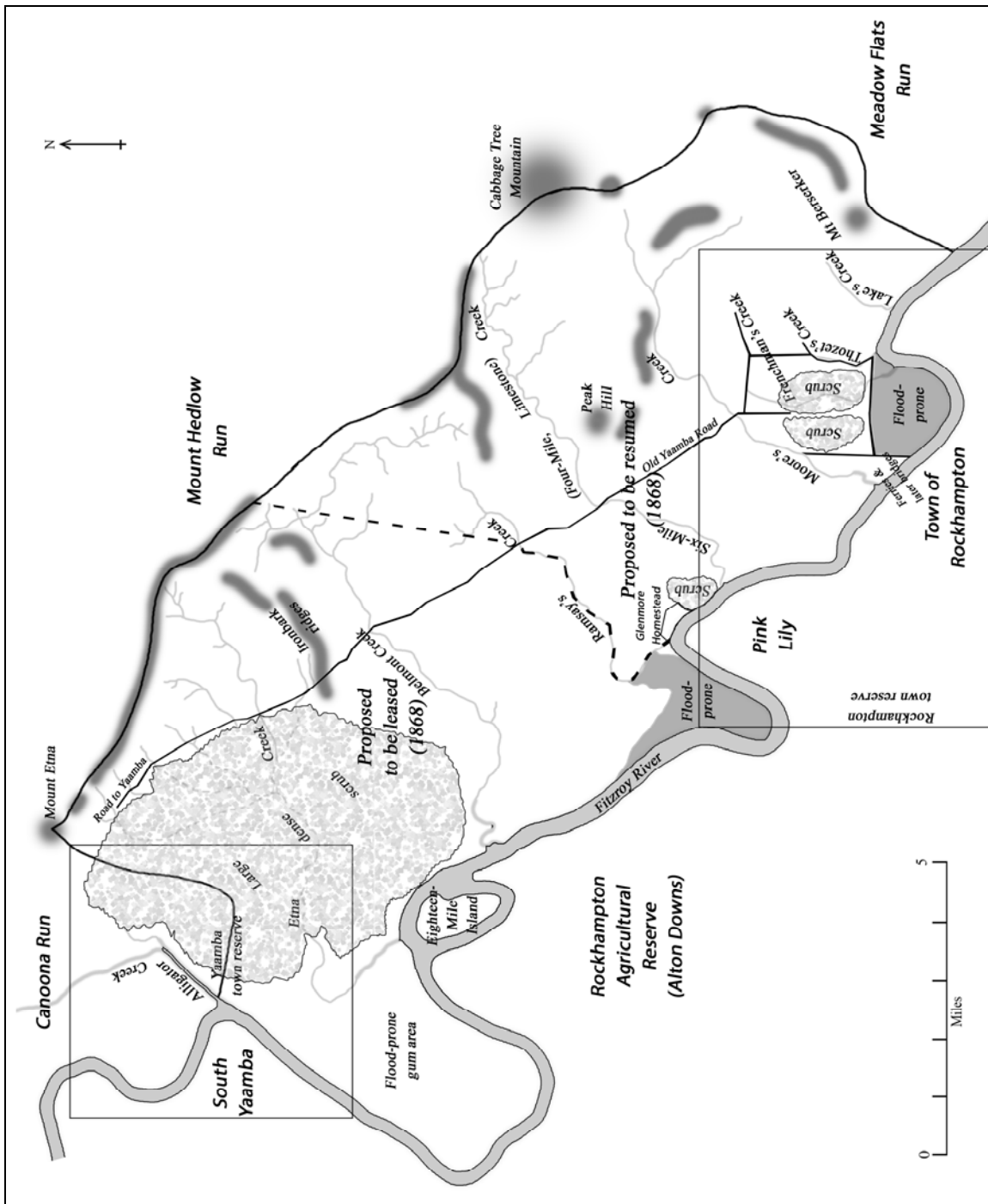


Figure 4. Map of Glenmore Run, c.1868



## Bibliography

The study of local and family history involves a wide range of sources, many of which are available in only some locations. All sources, even original materials, must be questioned and cross-checked and ensuing analysis must incorporate all knowledge before forming hypotheses. The following list can not aspire to detail all sources used, but nominates the major sources used to form the expressed knowledge. On the whole, the unnamed sources used would repeat the expressed knowledge, but without offering strength to the result.

For additional sources regarding Central Queensland local and family history, readers should consult:

Abbey, Olivia Jane, 1980, *Rockhampton: A bibliography to 1975*, 2 vols, Rockhampton: Capricornia Institute of Advanced Education.

## Manuscripts

### *Queensland State Archives*

#### **Office of the Governor and Executive Council**

*Inwards correspondence (Governor of Queensland):* GOV/A20, item 858502

*Inwards correspondence (Office of the Governor of Queensland):* GOV/A24, item 858506

*Letterbook of despatches to Secretary of State for the Colonies (Office of the Governor of Queensland):* GOV/31, item 17679

#### **Education and schools**

<i>Administration Files</i>	Glenmore State School, 1889–1967, Statistical returns: EDU/AB574, item 10800 Glenmore State School, No. 574, 1887–1947: EDU/Z1073, item 14697 Morinish No. 15 State School, 1894–1928: EDU/Z1846, item 15471 Park Avenue State School, 1899–1922: EDU/Z2162, item 15788 Park Avenue State School, 1901–1946: EDU/Z2163, item 15789 Parkhurst State School, No. 922, 1900–1921: EDU/Z2166, item 15792 Parkhurst State School, No. 922, 1900–1947: EDU/Z2167, item 15793 Rockhampton North Mixed No. 91, 1870–1921: EDU/Z2364, item 15990
<i>Admission Registers</i>	Allenstown State School, 1886–1918: A/45774, item 612031 Bowen Boys State School, 1880–1915: A/35198, item 611688, z1468 Bowen Girls and Infants State School, 1907–22: A/35193, item 611683 Glenmore State School, 1889–1959: item 1739590 Mount Morgan Central State School, 1887–98: A/43575, item 612879 North Rockhampton Primary School, 1888–1919: EDU/AA897, item 639801 Park Avenue State School, 1901–1931: SRS5013/1/1, item 813941 Rockhampton Central Boys State School, 1878–1926: EDU/AA884–5, items 639790–1 Rockhampton Central Girls State School, 1891–1893: A/171, item 611345

*Scholarship Examination Register*, 1918: Z93334

#### **Local government correspondence**

*Rockhampton North:* COL/O66, item 7118

#### **Prisons**

*H. M. Prison, Townsville:* A/45915, A/45954, A/45967, A/45983, SRS2/1/1, SRS23/1/1

*H. M. Gaol Brisbane:* PRI1/25.

**Justice and courts (Supreme, District, Petty Sessions, Water Police)**

*Insolvencies*: SCT/CB7, SCT/CB13, SCT/CB20, SCT/CB24, SCT/CB26

*Inquests*: JUS/N3, JUS/N253 and items on Z2863.

*Oaths of allegiance*: SCT/CF9, SCT/CF11, SCT/CF16

*Depositions (Bowen)*: CPS11B/D8, CPS11B/D9

*Depositions and case files (Rockhampton)*: A/60, CCT7/N45, CCT/N47

*Probate and intestacies*: A/17970, SCT/P11, SCT/P16, SCT/P33, SCT/P78, SCT/P82, SCT/P83, SCT/P135, SCT/P214, SCT/P259, SCT/P2189, items 1009113 and 1007259, parts of Z305 and Z2765

*Water Police Magistrates Court (Brisbane)*: CPS1/AW132

**Titles Office**

*Journals of conveyance and encumbrance*, 1862–1887: TLS/O1–TLS/O10, TLS/O48–TLS/O62

*Triplicate deeds of grant*: SRS47/1/1–99, SRS47/1/149

**Valuer-General**

*Notifications of change of ownership (parish of Murchison), 1946–1960*: VAL7/41, VAL7/43, VAL7/45, VAL7/47, VAL7/59, VAL7/68

*Notifications of change of ownership (elsewhere), 1949*: TRS1494/1

**Land, leases and selections**

*Grazing farms (Hughenden)*: LAN/DF2593A

*Grazing homesteads (Hughenden)*: LAN/DF2590

*Homesteads (Rockhampton)*: LAN/AG620

*Selections (Rockhampton)*: LAN/AG620, LAN/AG622, LAN/AG623, LAN/AG624, LAN/AG625, LAN/AG629, LAN/AG630, LAN/AG633, LAN/AG636, LAN/AG637, LAN/AG638, LAN/AG639, LAN/AG642, LAN/AG645, LAN/AG648, LAN/AG649, LAN/AG652, LAN/AG657, LAN/AG672, LAN/DF/3637

*Run registers*: CLO/N8, CLO/N11

*Glenmore Run No. 1634*: LAN/AF908

*Meadow Flats Run 1645*: LAN/AF918

*Applications to purchase Crown land after auction, 1899–1900*: LAN/AW26

*Register of sales by and after auction, 1889–1906*: LAN/40

*Registers of applications for selections*: A/25243, A/25245, A/25246, LAN/P39

*Registers of Crown land sales*: A/25241, A/25242, A/25244

*Tabular register of land, 1855–1859*: CLO/11

**Maps and plans**

*Plan of township of Rockhampton by Francis Clarke, c.1858*: SRS 4314/1/106

**Immigration**

<i>Passenger lists</i> :	IMM/112, item 18474	<i>Persia, Star of England, Sultana, Utopia, Wansfell</i>
	IMM/113, item 18475	<i>Beejapore</i>
	IMM/114, item 18476	<i>Eugenie, Lammershagen</i>
	IMM/115, item 18477	<i>Fritz Reuter</i>
	IMM/116, item 18478	<i>Carnatic, Earl Granville, Highflyer, Scottish Lassie</i>
	IMM/117, item 18479	<i>Almora, Chyebassa, Duke of Buccleuch, Maulsden, Merkara, Ravenscrag</i>
	IMM/119, item 18481	<i>Chyebassa</i>
	IMM/120, item 18482	<i>Chyebassa, Duke of Buckingham, Merkara</i>
	IMM/122, item 18484	<i>Duke of Argyll, Jumna</i>
	IMM/123, item 18485	<i>Merkara</i>
	IMM/124, item 18486	<i>Dacca, Roma, Tara</i>

*Crew list, Utopia, 23 Jul 1862*: COL/A33, item 846762

*Register of immigrants per Merkara, 7 Apr 1885*: A/151

### **Mines and minerals**

*Applications for registration of residence areas (Rockhampton)*, 1888–1889: MWO7A/Y3  
*Mineral leases (Hughenden)*: A/20586  
*Register of miners homestead leases (Charters Towers)*, 1897: A/20760, item 272110, GFHL 5413.  
*Register of mining area tenure (Rockhampton)*, 1887–1891: MWO7A/S3  
*Register of mining claims (Rockhampton)*, 1885–1889: MWO7A/N3  
*Register of survey plans for miners homestead leases (Charters Towers)*, 1897–1910: A/51669

### **Health**

*Goodna Asylum*: A/45627 (item 292619)  
*Insanity files*: CUR/R24  
*Nursing registrations*: B/3072 (item 324261), B/3074 (item 324263)

### **Miscellaneous**

*Central and Northern Separation papers*: PRE/6, item 861756  
*Company file, People's Butchering Company*: A/21612, item 283429  
*Correspondence of Chief Secretary's Office*: PRE/A436 (item 862496)  
*Correspondence of Colonial Secretary's Office*: COL/A30, COL/A33  
*Correspondence of Public Works Department*: WOR/C10, WOR/C11  
*Electoral register of Blackall electorate (1881)*: A/36 (item 212261)  
*Fifth Queensland Contingent*: Z4222 (item 8872)  
*Orphanages (Rockhampton)*: A/71243, A/71250, items 313128, 313131  
*Pensions (Australian)*: COL/458, A/4774  
*Public service papers*: JUS/103  
*Registers of cattle brands and earmarks*: A/34741 (item 281200)  
*Reserves (files)*: TR1726/1  
*Road cases (files)*: TR1832/1  
*Separation petition by Central Queensland women*, Nov 1892  
*Separation petition*: A/26101  
*Special grants*: A/66802 (item 308519), A/66803 (item 308520)  
*Special leases*: TR1794/1, A/47803

### **National Archives of Australia, Canberra**

*Alien registers and registration*: series BP4/3, BP384/9, BP384/10, BP384/11, BP384/17  
*Civil aviation aerodrome*: series A705, BP374/1  
*Exemptions from dictation test (certificates)*: series J2483  
*Exemptions from dictation test (papers)*: series J2773, BP343/15  
*Exemptions from dictation test (registers)*: series BP384/4  
*Military service papers*: series B884, B2455, *et al*  
*Passenger lists and passports (various ports)*: series J716/P1, J721/P1, J722/P1, J725/P1, J728/P1  
*Rifle ranges and clubs*: series BP190/1, BP190/3, BP374/1

### **National Library of Australia, Canberra**

New South Wales, Legislative Council, 1859, *Separation of Moreton Bay, etc.*, Sydney: Thomas Richards, Government Printer

### **John Oxley Library, State Library of Queensland, Brisbane**

*Methodist Church of Australasia*: A18/3/4, R 369/12, OMDU 79/1/4(a), OMDU 79/1/4(d), OMDU 79/1/5, OMDU/79/1/8, OMDU/79/2/1(9), OMDU/81/2/6(a), *et al*

### **State Library of Victoria, Melbourne**

*Passenger lists*: New South Wales, Western Australia, United Kingdom

### **Schaffhausen Stadtarchiv, Switzerland**

Bartenschlager, *Collated families of Schaffhausen*

**Hamburg Emigration Archive, Germany**

*Verzeichniss der personen mit Segelschiffe Lammershagen, direkte*, 10 May 1871

**Fryer Library, University of Queensland**

Gwen Harwood papers, UQFL45

**CQUniversity Library, Special Collections, Rockhampton**

Baptist Church of Australia, Rockhampton district, 1929–1931, *Marriage register*

Birkbeck Papers

Lands Department files: AH877, GF116, Homestead 1371, PPS2941, *SL471*, *SL979*, *SL1296*, *SL3716*, *SL3915*, *SL6219*, *SL11458*

Lands Department, 1865–1868, *Register of Crown land sales*, MS 18

Lands Department, 1868–1872, *Application book*, MS A3/22

Lands Department, 1868–1888, *Register of Crown land sales*, MS A3/19

Lands Department, 1869–1882, *Register of applications for leases of ten years currency*, MS A3/23

Lands Department, 1885–1915, *Application book under the provisions of the Crown Lands Act of 1884*, MS A3/27

Lands Department, 1888–1909, *Register of land sales by auction and selection*, MS A3/20

Methodist Church of Australasia, Archer Street Rockhampton Primitive Circuit, 1859–1975, *Marriage register*, Mss B11/224–37

**Rockhampton Regional Library, Rockhampton**

North Rockhampton Borough Council, *Valuation books*: 1892, 1916

*Valuation book for North Rockhampton*: 1919, 1920, 1925, 1926, 1930, 1934–1936, 1937–1939

*Valuation book, Archer ward*: 1878, 1879, 1887, 1895, 1896, 1897, 1898, 1911

*Valuation book, Fitzroy ward*: 1895, 1897, 1898, 1900, 1903

*Valuation book, Leichhardt ward*: 1895, 1896, 1897, 1898, 1900, 1901, 1902, 1903

*Valuation book*, May 1879

**Central Queensland Family History Association, Rockhampton**

*Index to burials and deaths in Rockhampton, 1904–1990*

*Index to burials in North Rockhampton Cemetery, 1879–1984*

*Index to burials in Rockhampton Cemetery, 1864–1970*

*Index to interments at Rockhampton Crematorium, 1948–1999*

Makela, Karl, 2005, *Index to Bowen Cemetery Burial Register, 1861–2005*, Rockhampton: CQFHA

**Rockhampton Military Museum**

*Map of Area J, Camp Rockhampton*, 1942

**Private collections**

*Johnson Collection*

*Ernie Gomersall Collection*

**Journal articles**

‘Proceedings of the Numismatic Society, 1843–44’, pp 27, 35, in Akerman, John Yonge, ed., *The Numismatic Chronicle*, London: Taylor & Walton, vol. 6.

Flanagan, Bob, ‘The Taylor family – Black Ball Line to Tibet’, in Friends of Norwood Cemetery, Jan 2011, *Newsletter No. 70*, pp 4–5.

Ross, Vivian, ‘Early pastoral settlement in the coastal district of Central Queensland’, in *Journal and Proceedings of the Royal Australian Historical Society*, vol. 39, 1953, part 6, pp 281–347.

## **Newspapers and periodicals**

### ***Central Queensland***

The Capricornian  
The Central Queensland Herald  
The Daily Mercury  
The Daily Northern Argus  
The Daily Record  
The Longreach Leader  
The Morning Bulletin  
The North Rockhampton Times  
The North Rockhampton Times and Blackall Electorate Advertiser  
The Northern Argus  
The Rockhampton Bulletin and Central Queensland Advertiser  
The Rockhampton Bulletin and North Queensland Advertiser  
The Rockhampton Bulletin  
The Rockhampton Evening News  
The Rockhampton Temperance Advocate  
The Western Champion  
The Western Mail

### ***Other Queensland***

The Brisbane Courier  
The Cairns Post  
The Courier (Brisbane)  
The Courier-Mail  
The Darling Downs Gazette and General Advertiser  
The Moreton Bay Courier  
The North Australian and Queensland General Register  
The North Queensland Register  
The Northern Miner  
The Port Denison Times  
The Queenslander  
The Townsville Daily Bulletin  
The Worker (Brisbane)

### ***Other Australian***

The Advertiser (Adelaide)  
The Argus (Melbourne)  
The Australian Town and Country Journal  
The Australian Women's Weekly  
The Bendigo Advertiser  
The Courier (Hobart)  
The Empire (Sydney)  
The Evening News (Sydney)  
The Geelong Advertiser  
The Illustrated Sydney News  
The Launceston Examiner  
The Maitland Mercury and Hunter River General Advertiser  
The Mercury (Hobart)  
The Moorabbin News  
The North Western Advocate and Emu Bay Times  
The South Australian Advertiser  
The Sydney Morning Herald  
The West Australian

**Great Britain and Ireland**

The Leeds Mercury

**Civil registration certificates**

Queensland, Registry of Births, Deaths and Marriages and/or District Registries in Rockhampton and Townsville

Birth certificates (72 items)

Death certificates (98 items)

Marriage certificates (74 items)

New South Wales, Registry of Births, Marriages and Deaths

Birth certificates (3 items)

Death certificates (4 items)

Marriage certificates (6 items)

England, General Register Office

Birth certificates (29 items)

Death certificates (8 items)

Marriage certificates (5 items)

**Parish registers**

Anglican Church of Australia, Bowen Holy Trinity Church, 1866, *Parish register*

Church of England, parish of Allerthorpe by Pocklington, 1600–1848, *Bishops transcripts*

Church of England, parish of Allerthorpe by Pocklington, 1616–1901, *Parish registers*

Church of England, parish of Bainton, *Parish registers*

Church of England, parish of Great Givendale, 1657–1901, *Parish registers*

Church of England, parish of St Thomas', Dudley, 1613–1855, *Bishops transcripts*

Church of England, parish of Warter, 1598–1856, *Bishops transcripts*

Church of England, parish of Warter, 1653–1901, *Parish registers*

Methodist Church of Australasia: see separate entry for *John Oxley Library*

Presbyterian Church of Australia, St Andrew's Rockhampton parish, 1938, *Marriage register*

**Plaques, monuments and memorials**

North Rockhampton Cemetery, Queensland

Rockhampton Cemetery, Queensland

Rockhampton Crematorium, Queensland

**Websites**

*Brisbane Grave Location Search*, <http://www.online.brisbane.gov.au/cemeteries>

*Trove*, <http://www.trove.nla.gov.au>

*E-Courts*, <http://www.courts.qld.gov.au>

*Ancestry.com*, <http://www.ancestry.com> (United Kingdom: Outward passenger lists)

*Google Maps*, <http://maps.google.com>

**Personal communications**

Barnes, Daisy

Barnes, Rhonda

Graham, Rose

Good Shepherd Nursing Home, Townsville

Guildhall Library, London

Johnson, Dell

Johnson, Ken

Johnson, Margaret

Macfarlane, Robert

Smith, Carl

Smith, Dave

Smith, Glen

Smith, Jack

Smith, Julia

Tati, June

Wade, George

Wade, Ivy

Young, Ray

## **Government gazettes**

*London Gazette*

*New South Wales Government Gazette*

*Queensland Government Gazette*

*Queensland Police Gazette*

*Victoria Government Gazette*

## **Electoral rolls**

Australia, 1903, *Electoral roll*, Capricornia. Herbert, Maranoa, Oxley, Wide Bay  
Australia, 1913, *Electoral roll*, Brisbane, Capricornia, Kennedy, Oxley, Wide Bay  
Australia, 1922, *Electoral roll*, Capricornia, Kennedy, Maranoa, Wide Bay  
Australia, 1934, *Electoral roll*, Capricornia, Kennedy, Wide Bay  
Australia, 1949, *Electoral roll*, Capricornia, Dawson, Kennedy  
Australia, 1959, *Electoral roll*, Capricornia, Kennedy  
Queensland, 1878, *Electoral roll*, Blackall  
Queensland, 1880, *Electoral roll*, Rockhampton  
Queensland, 1881, *Electoral roll*, Rockhampton  
Queensland, 1882, *Electoral roll*, Rockhampton  
Queensland, 1889, *Electoral roll*, Normanby  
Queensland, 1894, *Electoral roll*, Rockhampton North  
Queensland, 1904, *Electoral roll*, Rockhampton North  
Queensland, 1906, *Electoral roll*, Rockhampton North, Rockhampton  
Queensland, 1908, *Electoral roll*, Gregory  
Queensland, 1909, *Electoral roll*, Flinders, Gregory, Rockhampton North  
Queensland, 1910, *Electoral roll*, Flinders  
Queensland, 1913, *Electoral roll*, Gregory  
Queensland, 1916, *Electoral roll*, Keppel  
Queensland, 1929, *Electoral roll*, Rockhampton North  
Queensland, 1932, *Electoral roll*, Charters Towers, Rockhampton North, Rockhampton  
Queensland, 1933, *Electoral roll*, Charters Towers  
Queensland, 1934, *Electoral roll*, Rockhampton North  
Queensland, 1935, *Electoral roll*, Gregory, Rockhampton North  
Queensland, 1936, *Electoral roll*, Gregory, Rockhampton North, Rockhampton  
Queensland, 1937, *Electoral roll*, Rockhampton  
Queensland, 1945, *Electoral roll*, Charters Towers  
Queensland, 1962, *Electoral roll*, Flinders

## **Censuses**

England, 1851, *Census of England*, HO107: piece 1937  
England, 1861, *Census of England*, RG9, pieces 1675, 2905  
England, 1871, *Census of England*, RG10, piece 2464 and RD Islington  
England, 1881, *Census of England*, RG11, pieces 2461, 2945, 4838  
England, 1891, *Census of England*, RG12, piece 1922

## **Other Crown and governmental publications**

New South Wales, 22 Jun 1842, *An Act for regulating the Sale of Waste Land belonging to the Crown in the Australian Colonies*, 5 & 6 Victoria, Cap. 36  
New South Wales, n.d., *Index to Births, Deaths and Marriages, 1788–1888*, Sydney: Reg.BMD  
New South Wales, n.d., *Index to Births, Deaths and Marriages, 1888–1918*, Sydney: Reg.BMD  
Queensland, 1860, *An Act for Regulating the Occupation of Unoccupied Crown lands in the Unsettled Districts*, 24 Victoria 11  
Queensland, 1860, *An Act to provide for the alienation of Crown lands*, 24 Victoria 15  
Queensland, 1863, *An Act to consolidate and amend the laws relating to the occupation of Crown lands for pastoral purposes*, 27 Victoria 17  
Queensland, 1868, *An Act to Consolidate and Amend the Laws relating to the Alienation of Crown Lands*, 31 Victoria 46

- Queensland, 1873, *Blue Book for the year 1872*  
 Queensland, 1875, *State Education Act*  
 Queensland, 1884, *Crown Lands Act of 1884*, 48 Victoria 28  
 Queensland, 1885, *Votes and Proceedings*  
 Queensland, 1903, *Annual report of the northern protector of aboriginals for 1902*  
 Queensland, Economic Development, 2013, *CQU Rockhampton Urban Development Area Development Scheme*  
 Queensland, n.d., *Index to Births, Deaths and Marriages, 1829–1889*, Brisbane: Reg.BDM  
 Queensland, n.d., *Index to Births, Deaths and Marriages, 1829–89*, Brisbane: Reg.BDM  
 Queensland, n.d., *Index to Births, Deaths and Marriages, 1890–1914*, Brisbane: Reg.BDM  
 Victoria, 1998, *Index to births, deaths and marriages in Victoria, 1836–1888*, Hampton: Macbeth Genealogical Services

### Other publications

- Australian Dictionary of Biography*, Melbourne: University Press, 1967  
*Australian Dictionary of Biography*, Melbourne: University Press, 1969  
*Australian Dictionary of Biography*, Melbourne: University Press, 1996  
*Australian Dictionary of Biography*, n.d., Canberra: Australian National University  
*Baines' Directory*: 1823  
 Bird, John Theophilus Symons, 1904, *The early history of Rockhampton*  
 Black, Alexander Neil, 1991, *All the Blacks*, Scarborough: Black  
 Bloxson, Jessica Inga, 1987, *Home Sweet Hotel*, Corinda: Boolarong  
 Burke, Bernard, 1891, *A genealogical and heraldic history of the colonial gentry*, London: Harrison & Sons  
 Burke, Bernard, 1895, *A genealogical and heraldic history of the colonial gentry*, London: Harrison & Sons  
 Charters Towers City Council, *Grave registrations report*, 5 vols  
 Cleveland, North Yorkshire & South Durham Family History Society, 1999, *Index to 1891 census of Guisborough Workhouse*, Redcar: CNYSD FHS  
 Conaghan, Sylvia A. and Nola Tom, 2012, *The 1862 voyage of the ship Utopia to Queensland*, Rockhampton: Conaghan & Tom  
 Cryle, Denis, 1992, *Academic Capricornia: A History of the University of Central Queensland*  
 Frew, Joan, *Queensland post offices 1842–1980 and receiving offices 1869–1927*  
*Gravestone of Rogers family*, in North Rockhampton Cemetery, compartment 3, section 1  
 Hodgkinson, Ian, *Queensland Miners Rights, 1870–1874*, Charters Towers: Hodgkinson  
 Johnson, Lex, 2009, *Another time and place: the Black and McKim families of County Sligo*, Rockhampton: Johnson  
 Johnson, Lex, 2009, *Time and Place: The Merediths of County Sligo*, Rockhampton: Johnson  
 Johnson, Lex, 2011, *Quiet achievers: the Black and Parker families of Central Queensland*, Park Avenue: Johnson  
 Johnson, Lex, 2012, *Morinish: where the bottle tree stands*, Park Avenue: Johnson  
*Lloyd's Captains Register*, 1869  
 Lubbock, Basil, 1921, *The Colonial Clippers*, 2nd ed., Glasgow: Brown  
 Maryborough & District Family History Society, *Index to Queensland Brands Register, 1945–1948*  
 Neale, Ralph P., 2007, *Racers of the Deep: The Yankee Clippers and Bluenose Clippers on the Australian Run, 1852–1869*, Melbourne: Australian Scholarly  
 North Riding of Yorkshire, Guisborough Quarter Sessions, *Bench record books, 1850–1890*  
*Oxford Dictionary of National Biography*, Oxford: University Press, 2004  
 Queensland Family History Society, ed., 1998, *Index to Queensland Intestacies Insolvencies and Wills, 1859–1900*, Indooroopilly: Queensland Family History Society  
*Queensland Post Office Directories*: 1868, 1894, 1894–95, 1896–97, 1900, 1901, 1902, 1903, 1904, 1910–11, 1919–20, 1926, 1928–29, 1930–31  
*Ryerson index*  
 Sampson, Alex, 1987, *Monumental inscriptions of Guisborough Cemetery, 1873–1987*, Redcar: CNYSD FHS  
 Stammers, Michael K., 1978, *The Passage Makers*, Brighton



*Brigalow Scrub and Melon Holes: Park Avenue, Glenmore and Black Ball Flat*

Tati, Mel, *Slide collection*, in *Rockhampton & District Historical Society*  
*Wise's Queensland Directory*: 1894

## Index

### Major headings:

Acts (parliament)	Enterprises	Parliament
Banks	Estates	People
Brands & marks	Farms & properties	Pests
Bridges & ferries	Finding aids	Petitions
Celebrations	Hospitals & diseases	Places (in district)
Cemeteries	Hotels	Places (other)
Charities & benevolence	Houses	Portions (land descriptions)
Clubs & societies	Immigration	Prisons
Companies & firms	Infrastructure	Public service
Courts	Land	Religions & faiths
Creeks, rivers, ranges	Local authorities	Reserves
Culture & heritage	Military	Roads & streets
Drugs	Movements	Selections & leases
Education (primary)	Natural disasters	Ships
Education (private)	Newspapers	Signatures
Education (secondary)	Parishes	Stations & runs
Education (post-secondary)	Parks & gardens	

### A

#### Acts

Education, 256, 269, 391  
Employment, 244  
Health, 245, 253  
Immigration, 34, 94, 119  
Land, 7, 22, 33, 39, 81, 183, 225, 387, 391  
Local authorities, 9, 287, 288  
Mining, 228  
Police, 253

### B

#### Banks

(building societies), 23, 217, 224, 229  
Australian Joint Stock, 5, 21, 23, 28, 44, 45,  
46, 55, 63, 66, 78, 112, 115, 160, 179, 196,  
350  
Bank of Australasia, 61, 113, 163  
Bank of New South Wales, 5, 43, 44, 78, 173,  
394  
Bank of Queensland, 5  
Commercial, 113, 215, 217, 251  
Commercial Banking Co. of Sydney, 113, 251  
Commonwealth, 217, 342  
Liverpool Borough, 34  
London Chartered Bank of Australia, 43  
Penny Savings, 150  
Qld Gov't Savings, 88, 342  
Qld National, 28, 127, 131, 162  
Union, 5, 10, 247

#### Brands & marks, xiii, 228

(earmarks), x, 77, 94, 95, 99  
(private marks), 228  
(special marks), 99  
(tattoos), 351, 354  
4CP, 96  
8WK, 132  
AG7, 99  
C0O, 79  
E9M, 91  
GK7, 132

HE1, 97  
HT4, 229  
J8C, 79  
JY4, 94  
L0K, 132, 133  
Q0W, 132  
Q2H, 229  
S0S, 77  
V0C, 74, 106  
VC, 81  
VC8, 81, 90  
WX6, 95

#### Bridges & ferries, xvi, 144, 303, 304

Alexander (railway), xiii, 232, 234, 236, 239,  
240, 309  
Dunlop, xii, 212  
Ferry, 15, 18, 71  
Fitzroy, xiv, 40, 83, 144, 184, 200, 204, 217,  
255, 256, 258, 280, 303, 304, 308, 310  
Fitzroy (old), 144, 253  
Four-Mile, 283  
Moore's Creek, 43, 281, 282, 283  
Neville Hewitt, 242, 304, 307  
Victory, 303

### C

#### Celebrations

Queensland Day, 9  
Separation Day, 9

Cemeteries, ix, xiii, xvi, 48, 56, 57, 84, 87, 88, 91,  
123, 195, 202, 212, 247, 249, 265, 281, 291,  
304, 307, 308, 311, 312, 346  
Bowen, 387  
Hughenden, 344  
Mount Morgan, 124  
North Rockhampton, xi, xiv, 56, 57, 78, 87,  
100, 103, 111, 129, 138, 139, 145, 146, 148,  
149, 150, 154, 170, 174, 176, 177, 182, 186,  
202, 206, 207, 211, 212, 216, 217, 219, 224,  
225, 229, 261, 264, 355, 356, 387, 389, 391

- Rockhampton, 14, 15, 44, 45, 54, 56, 59, 61, 64, 66, 73, 89, 97, 102, 114, 122, 128, 132, 141, 144, 145, 146, 147, 148, 183, 202, 219, 223, 224, 236, 237, 239, 387
- Rockhampton Crematorium, 147, 301, 307, 312, 355, 356, 387, 389
- Toowong, 20, 342
- Charities & benevolence
  - Charities, 68, 88, 127
  - Orphanages, xiii, 123, 124, 125, 279, 338
  - Pensions, 86
- Clubs & societies, xv, 12, 137, 224, 283, 286, 310, 387, 393
  - Australian Aero Club, 296
  - Aviation, 292, 299
  - Leadership, 150, 224, 254, 309, 333
  - Lodges, 73, 74, 87, 113, 137, 138, 141, 147, 347
  - Racing, 137, 299
  - Rifle, xiii, xiv, 139, 289, 290, 291, 292
  - Sports, 137, 231, 309, 310, 311
- Companies & firms
  - A. E. Alexander & Co., 158
  - A.M.P. Society, 345
  - Alliance Quartz Crushing & Gold Mining Co., 15, 44
  - Ambassador Motel, 266
  - Australian Agricultural Co., 4
  - Australian Cotton Co., 331
  - Australian Cotton Co-operative Assoc. Ltd, 240
  - Australian Cotton Growing Assoc. (Qld) Ltd, 239
  - Bethell & Co., 49
  - Black, Carpenter & Co., 172
  - British Australian Cotton Assoc. Ltd, 240
  - British Petroleum, 60
  - Broome & Elwing, 187, 293, 294, 295
  - Burns & Twigg, 193
  - C. T. Steen & Cullen, 105
  - Carlton United Brewery, 312
  - Central Queensland Wool Top Manufacturing Co., 182
  - City Auction Mart, 20
  - City Fuel Depot, 108, 109
  - City Printing Works, 230
  - Compressor Hire, 355
  - Cooperative Bakery, 150
  - Cooperative Butchering Co., 268
  - Cooperative Grocery Store, 150
  - Cooperative Quartz Crushing Co., 66
  - Cotton ginners, xiii, 239
  - D.C. Motors, 134
  - David Archer & Co., 7
  - Ergon Energy, 309
  - Feez Ruthning, 66
  - Finlayson & McKenzie, 148, 153
  - Finney, Tutty & Co., 197
  - Flower, Salting & Co., 10
  - Flower, Salting & McDonald, 10
  - Foodworks, 295, 312
  - Galton & Coher, 275
  - Glasgow Quartz Crushing & Mining Co., 82
  - Glenmore Land Co., 180, 251, 261, 282, 284, 317
  - Greater Union Theatres Pty Ltd, 177
  - H. V. Brumm & Co., 299
  - Haynes, Brown & Co., 21, 23
  - Headrick, Livermore & Co., 158
  - Hemmant & Stewart, 45
  - Hempenstall Bros., 239
  - Higson & Chapple, 327
  - Hogan & Cranley, 328
  - J. M. Kelly Group, 312
  - James Baines & Co., 33, 34, 48
  - James Lawrence & Co., 266
  - James Stewart & Co., 137
  - John Frazer & Co., 194
  - Johnson & Co., 160
  - Joseph Kenna & Co., 151
  - Ker & Clerk, 10, 62
  - Kirkcaldy Foundry & Engineering Works, 24
  - Kirker Reef Gold Mining Co., 44
  - Laing & den Taaffe, 23
  - Larkin Co., 294
  - Leggatt Family Real Estate, 224, 309
  - Lotze & Larnach, 9
  - Lynn Studio, 340
  - Macaree & Daly, 178, 198
  - Macartney & Mayne, 7, 8, 9, 24
  - Martin & Dickson, 20
  - Morinish Quartz Crushing Co., 66
  - Morris, Caporn & Beckerleg, 194
  - Mort & Co., 19
  - Mount Morgan Co., 122, 197
  - P. N. Russell & Co., 23, 25
  - Paton, Foster & Co., 18
  - Phoenix Foundry & Engineering Works, 24
  - Pierce, Murphy & Co., 251
  - Pollard & Co., 197
  - Prosser, Taylor & Co., 210
  - Pugh Brothers, 275
  - Queensland & Northern Territory Aerial Services Ltd (QANTAS), 294
  - Queensland Air Navigation Co., 296, 298, 299
  - Queensland Cooperative Milling Assoc., 182, 303
  - Queensland Investment & Land Mortgage Co., 63
  - Queensland Stores, 44
  - Queensland Tea Mart, 153
  - R. Foulkes & Co., 207
  - R. Shaw & Co., 103
  - Ranken, Rea & Co., 24
  - Rees R. & Sydney Jones, 179
  - Rees R. Jones & Brown, 194
  - Richardson & Wrench, 19
  - Robert Foulkes & Co., 212
  - Robert Shaw & Co., 163
  - Rockhampton & North Side Tramway Co. Ltd, 255
  - Rockhampton Aerial Services Ltd, xiv, 299
  - Rockhampton Pioneer Quartz Crushing Co., 44, 66
  - Shaw, Capper & Co., 23

- Smith & Burnet, 15, 16, 17, 18, 19, 20, 21, 22,  
26, 27, 29, 46, 47, 95, 96, 162, 167, 266,  
279, 307  
South British Insurance Co., 215  
Starline Drive-in Theatre Pty Ltd, 251  
Stewart & Hemmant, 26  
Stewart & Lucas, 73  
Sydney Foundry & Engineering Works, 25  
T. M. Black & W. H. Davie, 92  
T. Moir, R. Cousins & Co., 89, 162  
Taylor, Bethell & Roberts, 49  
Taylor, Sons & Co., 49, 247  
Tropical Auto Group, 308  
Valentine Quartz Crushing & Mining Co., 44  
Viley Holmes & Co., 107  
W. F. Ducker & Co., 43  
W. T. Wharton & Co., 346  
Walter Reid & Co., 44, 137, 149  
Western Australian Airways Ltd, 294  
Williams Ltd, 235, 236, 328  
Wilson, Hart & Co., 21  
Working Miners Quartz Crushing Co., 66
- Courts, 49, 131, 349  
(Bankruptcies & insolvencies), 23, 313, 342  
(Crown solicitors), 20, 63, 344  
(Intestacies), 161, 170, 172, 187, 217  
(Writs), 26, 114, 197  
District Court, 73, 80, 85, 99, 197, 217, 280,  
344  
Justices of the peace, 67, 87, 104, 127, 131,  
344  
Licensing, 72, 215, 351  
Petty Sessions, 27, 74, 88  
Police, 1, 14, 22, 30, 31, 36, 37, 41, 75, 81, 84,  
86, 88, 127, 131, 133, 153, 165, 196, 197,  
217, 220, 223, 229, 248, 249, 254, 281, 343,  
350, 351  
Small Debts, 40, 67, 74, 86, 133, 135, 165,  
197, 217  
Supreme, 22, 24, 26, 44, 46, 60, 86, 114, 193,  
197, 344  
Valuation Appeal, 109, 181, 220, 221, 247,  
248  
Water Police, 37, 385
- Creeks, rivers, ranges  
Alligator Ck, 7, 8, 10, 18, 61, 62, 77, 263, 280  
Athelstone Ra., 16, 43, 44, 96, 198, 316  
Belmont Ck, 11, 61, 62, 105, 319, 320  
Berserker Ra., xvi, 7, 9, 73, 91, 254, 256  
Etna Ck, 8, 61, 62, 266, 268  
Fitzroy R., xiv, xvi, 1, 2, 3, 4, 7, 8, 9, 10, 13,  
17, 26, 28, 39, 40, 57, 61, 62, 63, 71, 72,  
120, 140, 173, 198, 200, 206, 253, 254, 256,  
258, 263, 280, 303, 308, 310, 319, 320, 339,  
345  
Gavial Ck, 203, 293  
Hedlow Ck, 62  
Ironpot Ck, 99, 103, 104  
Lady Elliot Is., 35  
Limestone (Four-Mile) Ck, ix, xvi, 17, 18, 19,  
46, 49, 54, 56, 77, 78, 79, 80, 83, 85, 91, 93,  
95, 98, 99, 107, 109, 112, 132, 208, 229,  
247, 249, 254, 258, 259, 266, 267, 268, 280,  
282, 308, 311, 319, 321, 335  
Lion Ck, 119, 140, 211, 228, 299, 302  
Mackenzie Is., 140, 164, 211  
Mackenzie R., 1  
Moore's Ck, 10  
Nankin Ck, 63, 179  
Peak Hill, 94, 95, 111, 311  
Ramsay Ck, 308, 318  
Raspberry Ck, 83, 115  
Sandy Is., 63  
Spring Ck, 108  
Culture & heritage, 4, 5, 153, 352, 394  
Australian, 77, 308  
British, 53, 85, 119, 120, 121, 134, 153, 224,  
345, 351, 352  
Chinese, 90, 127, 153, 154, 209, 211, 217, 221,  
226, 229, 269, 348, 349, 350, 351, 352, 353,  
354, 355  
Indigenous, xvii, 84, 153, 164, 308, 311, 349  
Japanese, 90, 300, 351  
Mexican, 10, 59, 60
- D**  
Drugs, 349, 350, 351
- E**  
Education (primary), xiii, xiv, 256, 334  
Allenstown, 124, 125, 143, 384  
Berserker Street, 279  
Bowen, 338, 351, 384  
Emu Park, 275  
Etna Creek, 266, 268  
Glenmore, xiii, xiv, xi, xiii, 128, 147, 148, 161,  
219, 229, 236, 239, 256, 257, 258, 260, 262,  
266, 273, 308, 312, 334, 335, 384  
Morinish, 276  
Mount Archer, 290  
Mount Hedlow, 266  
Mount Morgan, 125, 275, 336, 338  
North R'ton, 40, 57, 86, 139, 228, 256, 258,  
269, 272, 275, 276, 308, 336, 338, 384  
North R'ton Catholic, 275, 336  
North R'ton, 275, 276, 336  
Park Avenue, xiii, xiv, xiii, xiv, 128, 148, 153,  
185, 211, 219, 223, 230, 239, 261, 269, 271,  
272, 273, 274, 275, 276, 277, 302, 310, 311,  
336, 337, 384  
Parkhurst (Four-Mile Creek), xiii, 114, 115,  
150, 153, 266, 267, 268, 269, 308, 348, 384  
Rockhampton, 125, 143, 266, 338, 384  
Seventh Day Adventist, 266  
Education (private)  
Emmaus College, 149, 266, 311  
Grammar School, 198  
Marian College, 311  
R'ton Girls Grammar, 139  
St Stanislaus' College, 311  
Education (secondary)  
Glenmore State High, 307, 312  
Education (post-secondary)  
CQUniversity, ix, xv, 3, 52, 223, 304, 305,  
307, 342, 384, 387, 391, 393, 394  
Mechanics Institute, 254  
Technical college, 304

- University of Queensland, 223, 342, 387
- Enterprises
  - Boarding houses, 196
  - Cement manufacturing, 19, 64
  - Cinemas, xvi, 177, 251, 308, 311, 312
  - Conference centres, 309
  - Cotton ginnery, xiii, 239
  - Horseracing tracks, 289, 296
  - Market gardens, 24, 154, 217, 221, 223, 224, 226, 229, 241, 348
  - Mines, 44, 82
  - Model farms, 15
  - Orchards, 268, 281
  - Quarries, 19, 57, 108, 233, 235, 240
  - Saleyards, 14, 107, 130
  - Sawmills, 109, 130
  - Shopping centres, 307, 308, 312
  - Shops (individual), 30, 138, 139
  - Showgrounds, 198
  - Slaughteryards, 21, 119, 205, 231, 247, 293, 302, 309
  - Stock exchange, 40
  - Sugar mills, 128, 342
  - Vineyards, 225, 229
- Estates
  - Berkley, 16
  - Black Ball, 181
  - Coalition, xii, 177, 178, 198, 283
  - Duchess Land, 333
  - Eton Vale, xi, ix, x, xi, 19, 20, 21, 22, 25, 26, 29, 30, 31, 70, 83, 95, 155, 256, 259, 260, 266, 280, 308, 314, 317, 318
  - Kensington, xiii, xii, 19, 24, 25, 65, 160, 213, 215, 217, 218
  - Kensington, River View & Queen's Park, xiii, 213
  - Montague, xii, 148, 160, 161, 164, 259, 314
  - Ocean View, 202
  - Pandora, 130
  - Park Avenue, xii, 187, 223, 293, 311
  - Parkhurst, xii, 78, 102, 112, 266
  - Penndorris, xii, 173, 174
  - Preston, xii, 209, 210, 211
  - Queen's Park, xii, 198
  - River View, 215
- F**
- Farms & properties
  - Adelaide Park, 107
  - Almond Hill, 98, 100, 267, 315
  - Alnwick Park, 132, 316
  - Avenue Gardens, 176, 311
  - Ayrshire Downs, 343
  - Ayrshire Park, 130, 131, 132, 316
  - Balnagowan, 74
  - Braeside, 111
  - Broxie Farm, 157, 308, 310, 312
  - Brunette Downs, 115
  - Burnside, 50
  - Carlsruhe, 275
  - Connor Park, xiv, 158, 296, 299, 300
  - Coolarah, 186
  - Corona, 293
  - Corpach, 68, 80, 83, 86, 90, 136, 208, 258, 310
  - Craigilee, 186
  - Dalgangal, 10
  - Fern Hill, 95
  - Fernvale, 190
  - Fitzroy Orchard, 224, 229, 318
  - Glen View, xii, 94
  - Glenhome, 202
  - Glenmore Farm, 185, 186
  - Greenwood, 101, 102, 103, 217
  - Hazeldene, 186
  - Ivy Grange, 260
  - Kroombit, 7
  - Leicester, 168
  - Melrose, 186
  - Morganville, 187
  - Müllerville, 16
  - Oakfield, 79
  - Park View, 184
  - River View, 211, 224, 225, 228, 236, 310, 311
  - Rose Farm, 180
  - Rosevale, 132
  - Ruskey, 130
  - Saxon Garden, 229
  - The Glens, 280
  - The Pocket, 63
  - The Springs, 187
  - Valleyfield, 91, 92
  - Warrah, 102
  - Withersfield, 140
  - Woodburn, 21
- Finding aids
  - Aliens, xiv, 326
  - Directories, xiii, xiv, 321, 323, 325
  - Electoral rolls, xiii, 318
  - Eton Vale transfers, xiii, 313
  - Fallen soldiers, xiv, 326
  - Petitions, xiii, 313
  - Queen's Park leaseholds, xiv, 327
- H**
- Hospitals & diseases, 64, 89, 102, 138, 301, 345, 349
  - (Plague), 140, 211, 222
  - Asylums, 386
  - Charters Towers, 346
  - Hughenden, 344
  - North Rockhampton, 139, 311
  - Port Curtis & Leichhardt Districts, 131
  - Rockhampton, 138, 144
  - St John's (Tannachy), 148
  - Townsville, 345, 389
- Hotels
  - Alliance, 14
  - Anchor, 321
  - Burnetville, 16, 23, 24, 27, 80, 303, 307
  - Bush Inn, 45
  - Club, 131
  - Commercial, 73, 114, 163, 317
  - Cremorne, 323
  - Criterion, 23, 45, 46, 59, 197
  - Fitzroy, 21, 22, 193
  - Frenchman's House, 14
  - Kalka, 18, 323
  - Log Bridge, 101

- Market, 113  
National, 74  
Palace, 326  
Park Avenue, 302, 311  
Post Office, 102, 103, 321  
Queensland, 44  
Railway, 323  
Red Lion, 133  
Red Rock, 215  
Rockhampton, 14  
Royal, 114  
Saleyards, 121  
Shakespeare, 153  
Shamrock, 27  
Shamrock Inn, 24  
Telegraph, 215  
Victoria, 56, 307, 322
- Houses  
Avonleigh, 114  
Boxmoor Villa, 90  
Cooinda, 139  
Dundee, 179  
Glencoe, 296  
Inverlochy, 186  
Kenmore, 179  
Narrow Escape, 130, 136  
Riverside, 230  
Rodenbeck, 187  
Roxburgh, 218  
The Grove, 214  
The Willows, 229
- I**
- Immigration  
Aliens, 351, 352, 354, 386  
Allegiance, 119, 121, 153  
Land orders, 10, 28, 33, 34, 48, 58, 71, 94
- Infrastructure, xiii, 279, 284  
Aerodromes, xiii, 292, 293, 298  
Bridges, xiii, 280, 286, 303, 304  
Electricity, xiii, 240, 243, 244, 245, 246, 272, 302, 309  
Railway (general), xvi, 5, 129, 130, 144, 148, 163, 164, 165, 167, 176, 177, 180, 182, 187, 191, 198, 231, 233, 236, 237, 238, 239, 240, 241, 243, 260, 262, 276, 293, 295, 297, 302, 303, 308, 309, 311, 312, 328, 329, 330, 331  
Railway (stations), 165, 231, 248, 261, 279, 293  
Shipping, 18, 25, 69, 296  
Water, xvi, 303
- L**
- Land  
Crown sales, xi, ix, 1, 3, 7, 12, 13, 14, 17, 28, 39, 42, 43, 45, 48, 49, 51, 53, 54, 61, 67, 85, 107, 108, 121, 209, 213, 225, 227, 229, 231, 242, 256, 269, 290, 313, 385, 387, 390, 394  
Prices, 1, 13, 14, 15, 16, 17, 19, 20, 21, 28, 39, 42, 48, 49, 50, 51, 52, 53, 54, 55, 62, 64, 77, 78, 80, 81, 91, 93, 94, 95, 96, 98, 99, 107, 132, 177, 181, 183, 184, 187, 209, 213, 220, 221, 226, 228, 233, 239, 247, 248, 249, 251, 265, 269, 293, 294, 295, 296, 300, 344
- Local authorities, 25, 30, 46, 72, 84, 85, 107, 108, 136, 153, 158, 176, 177, 179, 193, 194, 204, 205, 212, 220, 231, 233, 241, 243, 245, 247, 250, 254, 278, 280, 282, 284, 285, 286, 287, 288, 296, 299, 304, 347  
Dalrymple Shire, 344  
Fitzroy Division, 169  
Fitzroy Shire, 72  
Gogango Division, 84, 85, 136, 177, 200, 253, 256, 279, 280  
North Rockhampton, xiii, 25, 41, 109, 136, 164, 253, 282, 286, 288, 316  
Rockhampton, 15, 16, 25, 141, 184, 211, 240, 241, 250, 253, 283, 286, 287, 288, 296, 329, 330, 332, 333
- M**
- Military, xiv, 41, 90, 244, 290, 300, 303  
Air Force, 299  
Army, 139, 260, 299  
Boer War, 90, 386  
British Army, 142  
Citizen Force, 139  
Volunteer Defence, 139, 244  
World War One, 309  
World War Two, xiii, xiv, 89, 90, 111, 146, 149, 151, 158, 190, 219, 243, 300, 303, 304, 307, 333
- Movements  
Separation, xiii, 14, 40, 262, 313  
Temperance, 150  
Unions, 138, 223, 282
- N**
- Natural disasters  
Fire, 24, 41, 85, 86, 102, 109, 122, 144, 165, 215, 225, 291, 308, 343
- Newspapers  
Capricornian, 5, 388, 393  
Central Queensland Herald, 5, 388, 393  
Central Queensland Times, 5  
Courier newspaper, 36, 264  
Daily Northern Argus, 5, 117, 388, 393  
Daily Record, 5, 388  
Evening News, 5, 388  
Morning Bulletin, 5, 40, 49, 83, 118, 138, 247, 288, 340, 388, 393  
North Rockhampton Times, 5, 40, 255, 323, 388  
North Rockhampton Times & Blackall  
Electorate Advertiser, 5, 255, 388  
Northern Argus, 5, 40, 388, 394  
Rockhampton Bulletin & Central Queensland Advertiser, 5, 24, 36, 388, 393  
Rockhampton Bulletin & Northern Queensland Advertiser, 5, 393  
Rockhampton Temperance Advocate, 5, 40, 255, 388  
Townsville Bulletin, 345
- P**
- Parishes  
Archer, ix, xiv, 11, 12, 13, 14, 15, 17, 20, 29, 46, 80, 89, 96, 256, 290, 307, 312  
Fitzroy, 11

- Murchison, ix, x, xi, xii, xiii, xiv, 11, 12, 17, 18, 20, 28, 29, 39, 40, 41, 43, 44, 45, 46, 49, 50, 51, 55, 56, 65, 70, 71, 77, 79, 82, 91, 92, 93, 94, 96, 98, 100, 101, 103, 105, 107, 108, 156, 160, 162, 163, 168, 170, 172, 174, 175, 178, 179, 180, 181, 182, 184, 186, 188, 189, 194, 195, 198, 199, 203, 205, 210, 213, 214, 215, 218, 219, 220, 222, 227, 248, 254, 256, 261, 265, 279, 292, 293, 318, 319, 320, 321, 385
- Parks & gardens, 21, 40, 41, 231, 233, 236, 238, 241, 243
- Avenue Gardens, 176
- Botanic Gardens, xvi, 15, 16, 19, 39, 43, 51, 304
- Cremorne Gardens, 16, 82, 308
- Five Star Park, 310
- Queen's Park, xiii, 231
- Victoria Park, 5, 198, 217, 240, 278
- Parliament, 1, 3, 4, 14, 20, 26, 34, 40, 41, 66, 67, 105, 179, 193, 194, 225, 231, 254, 261, 263, 264, 274, 277, 293, 294, 295, 296, 297, 386
- People
- (Charley Sprinkle), 86
- (Mary Ann), 349
- (Willie), 349
- (Willy Yank Yank), 326
- Abbiss, 78, 323, 325
- Abbott, 177, 282, 316
- Abel, 120
- Acheson, 284
- Adamson, 286
- Ah Boo, 221, 326
- Ah Chew (Jimmy), 350
- Ah Chong, 221
- Ah Fook, 221
- Ah Hay, 153, 326
- Ah Hock, 349
- Ah Kay, 221
- Ah Kee, 326
- Ah Mee, 229
- Ah Moi, 229
- Ah Peter, 221
- Ah Quen, 221
- Ah Sang, 140
- Ah Sing, 349
- Ah Tong, 172, 349
- Ah You, 221, 326
- Ahern, 233, 318
- Airey, 172, 269, 270, 271, 272, 276, 315, 323, 336
- Albrecht, 88
- Alder, 162
- Alexander, 75, 81, 291, 292
- Allan, 203, 204, 205, 206, 278
- Allen, 24, 140, 157, 159, 180, 181, 248, 261, 314, 316, 321, 323
- Allenby, 314
- Alley, 289, 314, 321
- Allsburn, 321
- Alsbury, 318
- Ames, 318
- Anders, 330, 332
- Andersen, 202
- Anderson, 157, 159, 186, 187, 257, 259, 281, 313, 318
- Andrewartha, 172, 257, 259, 315
- Andrews, 279, 321
- Anslow, 14, 15
- Appel, 284
- Appleton, 140
- Archdall, 248, 249
- Archdeacon, 146
- Archer, 3, 7, 10, 12, 14, 36, 63, 67, 173
- Archibald, 141
- Colin, 9, 173
- David, 7
- Edward Walker, 286
- Frederick, 130, 131
- William, 5, 7, 14, 23, 60, 81
- Armstrong, 20, 141, 318
- Arsenis, 235, 328
- Arthur, 235, 328
- Ascough, 3
- Ashmore, 123
- Ashton, 98
- Aspinall, 244, 330
- Atherton, 73, 80, 85, 107
- Atkinson, 101
- Attbeury, 230
- Auchinbach, 24, 157, 159
- Augenson, xiv, 297, 298, 300
- Aumann, 246
- Austin, 190
- Axe, 189
- Ayling
- Albert Walter, 172, 219, 271, 272
- Cecil Violet, 272
- Edward, 336
- Edwin Thomas, 271, 326
- Eva, 172, 326
- Jane, 336
- Lillian Agnes, 173
- Thomas, 173, 270, 272, 323
- Violet, 336
- Back, 189
- Bacon, 333
- Bailey, 131, 197, 198
- Bain, 60
- Bainbridge, 187
- Baines, 33, 34, 48
- Baker, 135
- Balderstone, 208
- Ball, 345
- Banbury, 123
- Bancroft, 321
- Banks, 49, 247, 312
- Bannerman
- Arthur Alexander, 100, 315
- Elizabeth Jane, 267, 333
- George, 315
- Jane, 71
- Mabel Mary Jane, 101, 267
- Banrock, 318
- Barber, 318

- Barker, 172, 207, 235, 239, 270, 271, 272, 316, 318, 324, 328, 336  
Barnard, 34  
Barnes  
    Clarence Henry, 155  
    Daisy, xv, 342  
    Ronald George, xi, 150  
    Thomas, 235, 327  
Barnett, 114  
Barnham, 245, 330  
Barr, 78  
Barran, 170, 172  
Barrett, 106, 222  
Barry, 7, 171, 172, 205, 236, 281, 325, 327  
Bartlem, 128  
Bartlett, 167, 168, 169, 205  
Bassett, 165  
Bates, 203  
    Charles, 340  
    Edward, 157, 159, 203, 340  
    Murray Vivian, 205  
    Thelma, 337  
    William George, 201, 203, 205, 206  
Baulch, 266  
Bawden, 285, 286, 289  
Beacham, 245  
Beak, 29, 106, 162, 167, 169, 170, 172, 182, 318  
Beal, 284  
Bean, 111, 141, 187, 189, 190, 191, 292  
Beard, 316  
Beasley, 146  
Beaumont, 291, 321  
Beckerleg, 193  
Beddek, 153  
Beer, 277  
Begg, 97, 98  
Beirne, 162  
Belcher, 162, 164  
Belfield, 167, 168, 169  
Bell, 101, 130, 179, 236  
Bellamy, 314  
Bellas, 51, 193  
Bendixson, 201, 270, 271, 336  
Bennett, 45, 46, 57, 233, 254, 284, 285, 316, 321  
Benson, 207, 318  
Bentley, 189, 190  
Bergin, 23  
Bermingham, 327  
Bernard, 210  
Berthold, 156  
Bertram, ix, 17, 21, 56, 79, 165, 315, 318, 325  
Besch, 131  
Beswick, 211  
Bethell, 48, 49  
Bevis, 55  
Beyer, 291, 292  
Bickhoff, 190  
Bidgood, 179  
Birch, 131, 291, 321  
Bird, 14, 321  
Birkbeck, xi, xii, ix, x, xvi, 10, 11, 28, 40, 58, 59, 60, 61, 62, 63, 64, 71, 77, 79, 81, 281, 321, 324, 387  
    Alfredo Eluterio, 60, 64, 77, 78  
    Arthur Damian, 60, 61, 64  
    Carlos Narcissus, 40, 56, 60, 112  
    Damiana Valdez, 60, 64  
    Elena, 60  
    George Lucius, 60, 61, 63, 256, 258, 314, 318  
    Henry Angelo, 60, 61  
    Mercedes B., 60  
    Morris, 60, 61, 77  
    Robert Epifanio, 60, 295  
    Samuel Bradford, x, 9, 11, 28, 59, 60, 64, 71, 160, 314  
    Samuel Bradford (jnr), 60  
    Samuel Bradford (snr), xi, 59  
Black, 340  
    Agnes Elizabeth, 267  
    Alexander Adam, 335  
    Alexander John, xi, 43, 57, 71, 72, 144, 149, 167, 169, 170, 171, 173, 217, 289, 308, 311, 315  
    Annie Winifred, 260  
    Arthur James Parker, 207  
    Beryl Ellen, 170  
    Catherine Reid, 50  
    Ernest Norman, 168, 292  
    Ethel Jean, 145  
    Frances May, 109  
    Harold Kilgour, 209  
    Henry Thomas, 337  
    James, 45, 59  
    Jean, 149, 173  
    John, 209, 267, 318  
    John William, 267  
    Mary Ellen, 71  
    Peter, 14  
    Thomas McKim, xii, x, 15, 56, 57, 71, 73, 74, 75, 85, 88, 92, 95, 105, 108, 109, 110, 146, 165, 167, 168, 169, 170, 217, 284, 286, 287, 288, 289, 302, 311, 316  
    William, 15, 29, 30, 31, 50, 52, 53, 56, 59, 70, 81, 105, 128, 160, 194, 248, 254, 265, 267, 281, 308, 313, 315, 318  
    William James, 102, 318  
Blackall, 63  
Blackburn, 158  
Blackford, 162, 164  
Blain, 183  
Blake, 238, 328  
Blanchard, 302  
    Alice Ann, 272, 336  
    Esther, 272, 336  
    Herman, xii, 154, 177, 179, 180, 236, 261, 269, 270, 283, 284, 285, 287, 311, 316, 324  
    Margaret, 272, 335  
    Mary Ann, 149, 272  
    Mrs, 149  
    S., 155



- Samuel, 29, 30, 31, 41, 70, 253, 280, 313,  
314, 318, 321, 324
- Sarah Ann, 29, 31, 149, 155, 282, 313
- Blandford, 321
- Bligh, xi, x, 65, 66, 67
- Bodrero, 53, 54, 230, 313
- Boercher, 117
- Bogie, 321
- Bohan, 29, 313
- Boland, 46, 183
- Boldeman, 214
- Bond, 162, 164, 228, 251, 340
- Borchardt, 206, 207, 208, 245, 295
- Boreham, 217
- Bosel, 118
- Bostock, 178, 179
- Boswood, 296
- Botcher, 318, 321
- Bottger, 189
- Bottomley, 136
- Bourcicault, 23, 40, 66, 67
- Bourke, 21, 22, 25, 159
- Bousfield, 35
- Bowen, 3, 5, 28
- Bower, 89
- Bowes, 244, 245, 330, 332
- Bowles, 176, 179, 197, 316
- Boyce, 40
- Boyd, 321
- Boyland, 342
- Boyle, 140
- Bradbury, 162, 266, 267, 324
- Bradford, 102
- Bradley  
Margaret, 72  
Mary, xii, 78, 79, 92, 93, 94, 95, 96, 97,  
101, 102, 103, 109, 111, 292
- Brady, 138, 204
- Braithwaite, 185
- Brake, 35
- Bramble, 324
- Brannelly, 77, 112
- Brazil, 286
- Bremner, 275
- Bresson, 321
- Brewer, 179, 340
- Bridgeman, 349
- Brigg, 277
- Briggs, 275
- Brighton, 238, 328, 330, 332, 333
- Brimacombe, 43, 72, 137, 169, 217, 315, 318
- Brimelow, 241, 261, 317, 329, 330, 332
- Brinsmead, 293, 295, 296, 299
- Briscoe, 325
- Broadhurst, 292
- Brodie, 204, 281, 324
- Brodnitz, 51, 52
- Brookfield  
Arthur Sidney, 78, 223  
Francis Herbert, 78, 126, 154, 238, 284,  
308, 317, 325  
Lily Ruth, 88, 325  
Mervyn Sidney, 78
- Brough, 254
- Brown, 14, 21, 37, 51, 52, 53, 136, 168, 204,  
224, 270, 272, 321, 324, 334, 336, 354
- Browne, 164
- Brückner, 118
- Bruigom, 229, 312
- Brumm, 190, 241
- Bryan, 233, 314
- Bryant, 209, 245
- Bryson, 15, 49, 51, 52, 107
- Buchanan, 55, 87, 203
- Buchert, 167, 168, 169
- Buckler, 314
- Budden, 30
- Bullock, 152
- Bundrock, 117, 189, 266, 267, 314, 318, 325
- Burke, 272, 285
- Burke & Wills, 4
- Burley, 342
- Burnet, ix, 15, 21, 22, 23, 24, 25, 26, 29, 48,  
66, 313
- Burns, 158, 215, 318
- Burra, 326
- Burrow, 270, 271, 272
- Burstall, 276
- Burton, 113, 114, 133, 136, 314
- Buschel, 214
- Bush, 315, 325
- Bushby, 23
- Butcher, 102, 152, 318, 321
- Butler, 260, 261
- Buzacott, 14, 23, 194
- Bye, 179
- Byerley, 67, 80, 183
- Byfield, 208, 209
- Byrne, 127
- Cagney, 209
- Cahill, 131, 189, 235, 328
- Cairns, 318
- Caldwell, 289
- Callaghan, 11, 27, 35, 82, 83, 87, 194
- Calvert, 96
- Cameron, 36, 68, 130  
Vere (Emily), xi, 68, 69, 70, 80, 81, 83, 86,  
95, 138, 254, 311
- Cameron-Smith, 189
- Campbell, 131, 140, 183, 321, 330, 332, 349
- Canfell, 266
- Canning, 15
- Cannon, 346
- Canny, 268, 272
- Canovan, 264
- Cant, 78
- Caporn, 104, 193
- Card, 114, 217
- Carey, 321
- Carley, 236
- Carpenter, 43, 169, 173, 315, 318
- Carr, 318
- Carroll, 60
- Carson, ix, 52, 213
- Carswell, 228, 281
- Cashel, 46

- Cassells, 131  
Chambers, 210, 211, 313, 318  
Champion, 24, 157  
Chapman, 32, 37, 179, 314  
Chappell, 219, 269, 270, 271, 272, 282, 293, 317, 324, 336  
Chaproncar, 162  
Charlie Sing, 326  
Charlton, 289  
Cheeseman  
    Ada, 257  
    Albert, 170, 171, 172, 257, 324  
    Donna, 225, 257, 258  
    George, 170, 172, 257, 259, 270, 313, 318, 321  
    Richard, 257  
    Sarah, 171, 272  
    Violet, 272, 336  
Cheetham, 318, 321  
Chen A. Yeen (Wing Wah), 153  
Cheshire, 175, 176, 199, 200, 203, 315, 324  
Chevalley, 126  
Chiang Kai Shek, 351  
Chin Haw, 326  
Chin Hin, 326  
Ching Wah, 127  
Chippendale, 146, 211, 315, 317, 336  
Chisholm, 344  
Chopping, 314  
Choppy, 86  
Chowns, 279  
Christie, 32, 314  
Christoffersen, 127  
Churchill, 5  
Cifuentes, x, 10, 59, 60, 77, 80  
Clapperton, 23, 66  
Clark, 11, 111, 141, 172, 215, 269, 270, 317, 324, 330, 332, 333  
Clarke, 172, 269, 270, 271, 272, 324, 330, 332, 336  
Clayton, 10, 304, 329, 331, 332  
Clement, 60  
Clements, 198, 248  
Clerk, 9, 156  
Cochrane, 24  
Codd, 248, 295  
Coe, 111  
Coghlan, 196  
Cohen, 23  
Coker, 81, 83, 97, 113, 114, 177, 180, 181, 182, 220, 247, 254, 281, 282, 285, 287, 315, 317  
Cole, xi, 143  
    Bob (Sergeant), 142  
    David Smith, 142  
    Mathew, 142  
    Matthew, 142  
    Robert, 142  
Colechin, 43  
Coleman, 11  
Colles, 24, 157, 159  
Collins, 145, 333  
Colvin, 179, 180  
Comil, 350  
Comley, 213, 214  
Conachan, 36, 340  
Conaghan, 317, 324, 340  
Condon, 329, 331, 332  
Conlon, 289  
Connolly, 53, 54, 195, 196, 197, 206, 207, 217, 219, 222, 315  
Connor, 133, 299  
Connors, 318, 321  
Conroy, 150, 168  
Considine, 254, 289, 318, 321  
Constantine, 56  
Cook, 53, 54, 230, 269, 318  
Cooling, 32, 37  
Cooper, 325, 350  
Coora (Cora), 270, 272  
Coote, 157, 158, 159  
Coppie, 85, 155, 260, 261, 317  
Cora, see Coora  
Cory, 130  
Costello, 83, 259, 260, 334  
Cottier, 318  
Cousins, 161, 162, 275, 282, 317, 318  
Cowap  
    Daisy, 272  
    Francis (Frank), 170, 171, 172, 270, 282, 285, 313, 317, 318, 324  
    Henri, 170  
    Mabel, 272  
    William Henri, 271  
Cowie, 180, 245  
Cox, 238, 328  
Cragg, xi, x, 74, 75, 88, 106, 146, 217  
Cramp, 46  
Crane, 244, 245, 331, 332  
Cranley, 238, 329  
Cranston, 145, 150  
Crate, 23  
Crawford, 293  
Cresswell, 29, 30, 70, 313  
Cribb, 21, 26, 157, 159, 178, 247  
Croft, 197, 198  
Cromb, 189  
Crosbie, 236  
Crowley, 340  
Cruden, 131  
Cully, 162, 314  
Cummings, 132, 133, 329, 331, 332  
Curnow, 189  
Curran, 14, 176, 181, 182, 190, 281, 282, 285, 303, 312, 316, 317, 322, 335, 337  
Curtis, x, xi, xiii, 43, 45, 46, 52, 53, 54, 78, 88, 92, 93, 94, 101, 102, 114, 115, 137, 144, 165, 167, 169, 179, 187, 195, 196, 197, 198, 199, 201, 213, 217, 219, 222, 247, 255, 292  
Cusack, 121  
D'Arcy, 40, 59, 60, 63, 66, 77, 92, 193, 194  
Dale, 345  
Daley, 322, 330, 331  
Dallon, 322  
Dallow, 175  
Dalrymple, 49, 50, 308

- Daly, 32, 37, 43, 55, 65, 68, 333  
 Danaher, 92, 94  
 Danahy, 85  
 Daniel, xiii, 248, 290  
 Danker, 131  
 Dargan, 162, 318, 324  
 Dargin, 17, 21, 41  
 Davidson, 126, 203  
 Davie, 89  
 Davies, 179  
 Davis, 46, 114, 131, 175, 278, 315, 322, 340  
 Dawbarn, 137  
 Dawson, 222, 289  
 Dayton, 173  
 de Robaulx, 127  
 Deacon, 317  
 Dean  
   Alfred William David, 89, 114, 202, 250, 314, 315  
   Edna Stuart, 89  
   Emily, x, 89, 151  
   Frederick Thomas, 89  
   John, 89  
   Leah, 89, 90, 151  
   North, 89  
   Philamena, 89  
   Stuart, 89  
   Thomas, 84, 114  
   Timothy, 114  
   Vere Emily, 89, 151, 202, 291  
   William, 296  
   William Thomas, 250  
   Zilpah, 89  
 Delandelles, 103  
 Delaney, 74, 133  
 Delisser, 183  
 den Taaffe, 48  
 Devenish, 291  
 Devine, 53, 230  
 Devitt, 269  
 Dibdin, 40, 247  
 Dick, 19, 28, 40, 43, 45, 55, 57, 63, 65, 67, 217  
 Dietz, 234, 328  
 Dillon, 56  
 Ding Gah  
   Charlie, xiv, 127, 228, 348, 349, 350, 351, 352, 353, 354  
   Donald Fritz, xiv, 338, 348, 350, 351, 352, 353, 354, 355  
   John, 351  
   Maud Ellen, 228, 348, 349, 351  
   Polly, 350  
 Dingwall, 205  
 Dittmann, 219  
 Dixon, 322  
 Doak, 302  
 Dobbs, 257, 259, 261, 282, 314, 318, 334  
 Doblo, 205, 333  
 Dodson, 230  
 Doeblin, 88  
 Donelly, 24  
 Doney, 121, 215  
 Donnolly, 195  
 Donovan, 106, 299  
 Doolan, 318  
 Dooley, 159, 162, 164, 183, 184  
 Doran, 328, 329, 331, 332  
 Dougherty, 162  
 Douglas, ix, 9, 11, 17, 18, 19, 20, 24, 25, 28, 48, 83, 97, 157, 158, 159, 233, 308  
 Downer, 15, 24, 157, 159  
 Drake, 55, 97, 314, 318, 322, 324  
 Drever, 291  
 Drew, 86  
 Driscoll, 329, 330  
 Drochmann, 176, 324  
 Dry, 89  
 Dryson, 24  
 Dugdale, 202  
 Duke, 240, 334  
 Dunbar, 159  
 Dunlop, 212, 244, 267  
 Durham, 236  
 Durrant, 179, 317, 324  
 Dutton, 167  
 Dwan, 198  
 Dwyer, 127, 191, 211, 318  
 Dyer, 157, 165, 191, 318, 322  
 Easton, 231, 309, 322  
 Eather, 131  
 Ebbott, 289  
 Eckersley, 169  
 Eckle, 322  
 Edgar, 23, 162, 186, 210, 229, 282, 289  
 Edmestone, 159, 172, 186, 211, 230, 238, 328  
 Edwards, 14, 277, 322  
 Egan, 127, 187, 189, 190  
 Elkington, xii, 194  
 Ellard, 65  
 Elliott, 7, 9, 254, 319  
 Ellis, 131  
 Ellison, 67  
 Ellrott, 319  
 Elsner, 29, 31, 155, 313  
 Emerson, 18  
 Engleton, 155, 156  
 Erickson, 197, 201, 203, 205, 219, 324  
 Etherden, 245  
 Evans, 156, 157, 268, 322  
 Everett, 13  
 Eves, 201  
 Ewart, 273, 275, 276  
 Eyles, 349  
 Face, 194, 247, 287, 289, 319, 322  
 Fahey, 211  
 Fairley, 315, 354  
 Fargher, 190  
 Farr, 322  
 Farrant, 199, 203  
 Farrington, 170, 172, 313, 319  
 Farris, 212  
 Faucards, 126  
 Faucett, 11  
 Faull, 343  
 Fausett, 280  
 Feather, 90

- Featherstone, 229, 266, 267, 325  
Featherstonhaugh, 290  
Feez, 7, 9, 14, 15, 23, 36, 66, 156  
Fehlhaber, 117, 119, 162, 254, 257, 259, 266,  
267, 315, 319, 322, 324, 335  
Fell, 268, 276, 315  
Fenlon, 317, 322, 334  
Fenning, 186  
Ferguson, 157, 179, 189, 194  
Field  
    Aaron James, 337  
    Albert James, 146, 147, 159, 161, 237, 257,  
    317, 334  
    Albert Martin, 337  
    Bert, 324  
    Emma Mary, 191, 337  
    Ernest, 337  
    Ernest Edward, 317  
    Herbert, 257  
    James, 146, 161, 162, 165, 183, 237, 257,  
    259, 282, 314, 317, 324, 327  
    John William, 162, 324, 334  
Felder, 131  
Fielding, 189  
Figg, 343  
Findlay, 319  
Finlay, 172  
Finney, xi, 157  
Fisher, 270, 272  
Fitz Roy, 5, 12, 67  
Fitzgerald, 322  
Flack, 317  
Flanagan, 244, 327  
Flannigan, 24  
Flavelle, 23  
Flee, 144  
Fleeting, 237, 327  
Fleming, 113, 114, 257, 259, 267, 315, 319,  
334, 335  
Flemming, 179  
Flenady, 314, 322  
Fletcher  
    Amelia Helena Elizabeth, 334  
    John, 315  
    John Maxwell, 155  
    Margaret Isabel, 327  
    Nancy, 335  
    Victor Osmond, 334  
Flint, 218, 219, 319  
Flowers, 109  
Foo Kee, 221  
Foot, 319  
Ford, 278  
Forde, 287, 293, 294  
Foreman, 151  
    Charles, 151  
    Edward, 90, 315  
    Edward (jnr), 90  
    Edward (snr), 90  
    Gilbert Burnett, 151  
    John, 151, 334  
    Sidney, 151  
Forrest, 248  
Forsdike, 159  
Foth, 219  
Foulkes, 77, 78, 98, 163, 164, 176, 178, 196,  
200, 201, 206, 212, 222, 223, 247, 248, 249,  
280, 319  
Fowks, 215  
Fowler, 114, 170, 172  
Fox, 322  
Francis, 30, 99  
Franklin, 333  
Fraser, 69, 133, 158, 159, 187, 299  
Freeman, 289, 295  
Freestun, 346  
Frei, 95, 97, 254  
Frost, 180, 324  
Fuary, 330, 332, 333  
Fullarton, 319  
Fuller, 170  
Fulton, 75, 107  
Fyfe, 14  
Gaden, 7, 155, 156  
Galia, 208  
Ganter, 125, 126, 219, 235, 236, 316, 326, 327,  
329, 331, 332, 335, 337  
Gardiner, 187, 202  
Gardner, 73, 229  
Garnett, 277, 278  
Garrett, 317  
Garrick, 56  
Gatton, 319, 322  
Gavin, 9  
Gay, 340  
Gee Sam, 203  
Geisler, 118, 240  
Gen Hay, 153, 211, 212  
Gent, xii, 152  
    Alfred, 152, 157, 270, 282, 314, 319, 324  
    Alice, 152  
    Ernest, 266, 336  
    Grace, 272  
    Lily, 272, 336  
    William Ernest, 271  
    William Henry, 152  
Gibbins, 324  
Gilbert, 32, 37  
Gilchrist, 54  
Gill, 131, 176  
Gillander, 317  
Gillespie, 179, 180, 317, 324, 336  
Gilmour, 91, 101  
Gipps, 1  
Gladstone, 5  
Glaholm, 175  
Glasgow, 296  
Gleeson, 289  
Goebel, 103, 104, 170, 315, 322  
Golding, 222, 328  
Goldston, 304  
Golightly, 322  
Gollen, 69  
Goodman, 319, 322  
Goodwin, 330, 331, 333, 343, 344  
Gooma, 137

- Goon Chew, 354, 355  
Gordon, 144  
Gorra, 170  
Gorse, 140  
Goss, 138, 325  
Gottke, 107, 257, 267, 319, 322, 324, 333  
Gough, 23, 137, 153, 157, 176, 204, 211, 232, 268, 269, 270, 271, 272, 289, 315, 336  
Gourlay, 54, 221  
Goy, 319  
Graff, 205  
Graffe, 322  
Graham, 149, 165, 244, 261, 329, 331, 332, 356  
Grant, 23, 168, 317  
Grath, 175  
Graves, 53, 229  
Gray, 202  
Greaves, 34, 198  
Gregg, 120  
Gregory, 9  
Gregson, 356  
Grieve, 299, 343  
Griffith, 190, 197, 263  
Grimish, 121  
Grout, 102  
Gunn  
    Alexander (Sandy), xi, xii, x, 59, 71, 77, 79, 80, 81, 91, 92, 93, 94, 95, 96, 97, 98, 99, 101, 102, 103, 104, 107, 109, 315, 319, 322  
    Elizabeth Jane, 71, 100  
    Jane, x, 70, 83, 100, 101  
    Mary, 71  
Guthrie, 189  
Guy, 198  
H.R.H. Princess Alexandra, 304  
Hadgraft, 322  
Haig, 23  
Halberstaedter, 13, 15, 23, 59, 187, 254, 315, 319, 354  
Halberstater, xii, 186, 187, 266, 303, 354  
Hall, 19, 158, 159, 193, 319  
Halliday, 230  
Halligan, 37, 44, 62, 66, 73  
Hammer, 155, 261, 317  
Hampson, 146  
Handsley, 145  
Hanna, 177, 317  
Hannay, 334  
Hansen, 208, 322  
Hanson, 340  
Hap Chew, 354  
Hardacre, 324  
Harden, 92  
Harding, 127, 179  
Hardman, 202, 203, 205  
Hardy, 275  
Harmsworth, 257, 259  
Harp, x, 117, 118  
    Anne, 267  
    Augusta, 334  
    Dorothy, 267  
Elizabeth, 267  
Frank, 267  
Frebert, 164, 334  
Harry, 114, 115  
Heinrich, 266, 267, 319, 324, 325  
Henry, 267, 326  
Henry William, 179, 180  
Herman Henry, 326  
Hermann, 114, 115, 117, 118, 229, 259, 266, 267, 314, 319, 324, 325  
Lena, 335  
Maria Helena, 117  
Matilda, 117  
Minnie Katrina Johanna, 162  
Miss, 326  
Mrs, 267  
Richard, 117  
Wilhelm, 117  
William, 235, 236, 240, 267, 327  
Harper, 235, 236, 240, 319, 327  
Harrington, 343  
Harris, 102, 103, 164, 174, 175, 179, 180, 210, 211, 235, 238, 260, 270, 271, 272, 280, 287, 313, 317, 322, 324, 328, 336, 345  
Harrison, 41, 187, 259, 334, 346  
Hartley, 109, 113, 114, 126, 235, 284, 289, 290, 300, 327  
Harvey, 233  
Hassall, 319  
Hawk, 53, 230, 316  
Hawkes, 167, 169, 281  
Hawksford, 197  
Hay, 88, 315  
Hayes, 42, 43, 55, 179  
Haynes, ix, 15, 21, 25, 43, 52, 159, 173, 174, 175, 177, 222, 310, 322  
Hayward, 202, 203, 204  
Head, 284  
Healey, 27  
Heede, 352  
Heffernan, 346  
Hegarty, 238, 329  
Heidemann, 114, 115, 319  
Hemmings, 270, 272  
Hempenstall, 163, 289  
Henderson, 98, 131, 322  
Hendy, 325  
Herbert, 15  
Hermann, 117, 189, 267, 324, 325  
Heron, 350  
Herring, 146  
Hewitt, 215  
Hicks, 164  
Hickson, 289  
Higgins, 74  
Higson, 30, 31, 68, 155, 313  
Hill, 85, 146, 229  
Hillyard, 24  
Him Jong, 221  
Hinchcliffe, 162  
Hindley, 238, 284, 287, 322  
Hinz, 314, 322  
Hirst, 73, 99

- Hitchcock, 170, 172  
Hixon, 149  
Hoare, 130  
Hobbs, 162, 164, 203, 205, 257, 258, 259, 260, 268, 319, 324, 334  
Hobler, 162, 180  
Hockings, 23  
Hodda, 328  
Hoddinott, 295, 296, 297  
Hodge, 175  
Hodges, 190  
Hodgkinson, 189, 328  
Hodgson, 211  
Hoelskin, 319  
Hoffmann, 117  
    Amelia, 267  
    Annie, 267  
    Carl, 101  
    Cedric Raymond, xii, 209  
    F., 315  
    Frank, 267  
    Frederick, 267  
    Henry Joseph, 209  
    Josef, 315  
    Joseph, 114, 115, 266, 267, 319, 324, 325  
    Kajeton, 117  
    Lizzie, 267  
    N. M., 334  
    Norman Herman, 205  
    Peter, 322  
    R., 315  
    Roman, 325  
    William, 325  
Hogan, 162, 172, 222, 235, 236, 238, 239, 260, 265, 280, 285, 322, 327, 328, 329, 330, 331, 333  
Holdsworth, 45, 210, 213, 218, 219  
Holland, 175  
Holliday, 328  
Hollingsworth, 52, 216, 254, 310, 315, 319  
Holm, 313  
Holmes, 73, 121, 133, 215, 270, 272, 315, 335, 336  
    Alfred, 128  
    Alfred George (snr), 128, 147  
Holroyd, 199  
Holt, 14  
Hoo Bun, 349  
Hopgood, 155, 256, 257, 258, 259, 260, 295, 314, 319, 324, 334  
Hopkins, xii, 150  
    Eleanor Felicia, 150  
    Francis, 150, 278, 315  
    Frederick George, 133  
    Frederick William, 317  
    Josephine, 153  
    Rosa Beck, 151  
    Sydney M., 346  
    William, 56, 85, 114, 150, 215, 254, 322  
Hoppner, 229, 263, 313, 319  
Horan, 105  
Horner, 186  
Horwell, 127  
Houchin, 337  
Houghton, 270, 272, 322, 336  
How Sing, 354  
Howe, 131  
Howell, 317  
Howitt, 314  
Howse, 294  
Hudson, 267  
Huet, 299  
Hughes, 11, 189, 190  
Humphreys, 15, 140, 336  
Humphries, 172, 270, 271, 324  
Hundtofte, 162  
Hunt, 132  
Hunter, ix, 21, 25, 30, 31, 41, 81, 92, 155, 165, 319, 322  
Huntly, 266  
Huseller, 317  
Hutcheson, 103, 205  
Hutchinson, 207  
Hutchison, 65  
Hutton, 114, 115, 289, 296  
Huxham, 286  
Hyde, 146, 147, 161, 237  
Hyland, 145  
Hynes, 207, 208  
I'Erson, 319, 322  
Ince, 289  
Ingham, 120  
Inglis, 172, 336  
Ingram, 145, 260  
Iredale, 289  
Ireland, 204, 205, 248  
Irlam, 85  
Irwin, 156, 157  
Iversen, 202  
Iverson, 146, 199, 202, 203, 204, 270, 271, 272, 282, 319, 324, 336  
Jackson, 142, 170, 172, 194, 265, 290, 319, 322  
Jacobsen, 332  
Jager, 193  
Jaggard  
    Alfred Robert, 54  
    Francis Albert, 54  
    George Edward, 54, 315  
    Josiah, xiii, 52, 53, 54, 196, 217, 219, 220, 221, 223, 224, 278, 316, 348  
    Rebecca, 54  
James, 14, 22, 45, 86, 189, 266, 267, 318, 333  
Jamieson, 154  
Janes, 346  
Jardine, 14  
Jaton, 126  
Jefferies, 330, 332  
Jeffery, 345  
Jeffries, 182, 204, 205, 241, 242, 243, 272, 289, 329, 330, 331, 332, 333  
Jenkins, 162, 281, 314  
Jensen, 267  
Jepson, 114, 325, 336  
Jobling, 325  
Joe Doo, 326

- Johannsen, 119  
 Johnsen, 319  
 Johnson, 114, 161, 162, 186, 207, 208, 219, 293, 294, 319  
   Catherine, 141  
   Christopher (Chris), xi, xii, xv, 139, 173, 207, 208, 246, 291, 292, 301, 309  
   Dell, xv, 173, 204, 206  
   Harry, 319  
   Ken, x, xv, 90, 138, 139, 173, 187, 190, 205, 212, 303  
   Leah, 114, 137, 286, 317  
   Lex, ix, x, 304  
   Margaret, xv, 173, 205, 209, 245, 309  
   Martin, 141  
 Johnston, 34, 86, 194, 206, 261, 293, 296  
   Maud, xiv, 347  
 Johnstone, 324  
 Joiner, 120  
 Jon Kay, 326  
 Jones, 150  
   Alfred Edwin, 151  
   Arthur, 217, 319  
   Charles Sydney, 179, 197  
   Cornelius John, 319  
   Dora, 149  
   Edwin James, 150  
   Eleanor Vere, 291  
   Elizabeth, 201  
   Emily, 87  
   Frances Margaret, 151  
   Francis Morgan, 213, 214, 216  
   George H., 131  
   Harold Francis, 150, 151, 202, 291  
   Harriet, 145  
   Henry, 85, 194  
   John Richard, 333  
   Katherine, 157  
   Maurice, 322  
   Obadiah, 201  
   Rees Rutland, 86, 92, 102, 119, 177, 213, 224, 229  
   Thomas, 15  
 Jopling, 278, 279  
 Jordan, 34  
 Jorgesen, 314  
 Joyner, 251, 322, 333  
 Judge, 328  
 Juds, 117, 322, 324  
 Kahl, 111  
 Karge, 117  
 Karl, 177  
 Kasch, 119  
 Kay, 249, 251, 325  
 Kayes, 292  
 Kearney, 15, 56, 253, 322  
 Kee, 224  
 Keeley, 167, 169  
 Keen, 34, 48  
 Keepkie, 189  
 Kele, 245  
 Keller, xi, 146  
   Amalia Barbara, 120, 345, 346  
   Amalie, 124  
   Amelia, 345  
   Anna Paulina, 124  
   August, 123  
   Carl August, 120  
   Paulina, 147, 180, 241  
 Kelly, 29, 30, 69, 70, 195, 211, 313  
 Kelso, 219  
 Kelton, 347  
 Kemp, 131, 289  
 Kempson, 281  
 Kenna, 55, 163  
 Kennedy, 57, 254, 289  
 Kent, xii, 109, 111, 284, 285, 286, 293, 324, 325, 351  
 Ker, 9  
 Kerr, 132, 185, 226  
   Alfred George (George), 184, 186  
   Charles Blair, 319  
   Colin Braithwaite, 186, 337  
   George, xii, 184, 185, 186, 235, 238, 239, 240, 250, 251, 282, 286, 293, 301, 307, 316, 317, 328, 330, 331, 333  
   George (jnr), 235, 238, 239, 240, 328, 330, 331  
   Henry, 343  
   Janet May, 186  
   Joyce, 186  
   Margaret, 132  
   Muriel Bell, 185, 186  
   William, 132  
   William B., 132  
 Kerridge, 235, 328  
 Kerrigan, 244, 329, 330, 332  
 Kilgour, 61, 70  
 Kilham, 257  
 Kilner, 69  
 Kime, 90  
   Allison, 316  
   Herbert Edward, 208  
   Herbert Edward (Herb), 90  
   Herbert Glen, 208  
   Herbert John, 90, 136, 208  
   Louisa, 151, 208  
 Kincart, 223  
 King, ix, xi, 17, 20, 21, 39, 48, 52, 57, 155, 156, 235, 240, 241, 299, 314, 327, 329, 331, 333, 344  
 King Yeen, 153, 254  
 Kingel, 289  
 Kiorgaard, 134  
 Kirkwood, 98  
 Klapproth, 187, 189  
 Klüver, 157, 260  
   Frederick, 257, 277  
   Frederick Henry Alfred Edward, 224, 335  
   Friedrich, 259  
   Fritz, xi, 157, 162, 164, 224, 282, 314, 319, 322, 324  
   Maria Christina, 224, 227  
   Minnie, 257  
   Ronald, 277  
   William, 162, 164, 282, 314, 324

- William Peter Daniel Christian, 317, 319  
Knight, 159, 171, 172, 317  
Knoth, 157  
Koch, 117, 346  
Kowalick, 199  
Kraatz, 173  
Krebs, 276  
Lain, 277  
Laister, 208  
Lamb, 127  
Landry, 313, 322  
Landsberg, 119, 218, 247  
Langford, 277, 327, 329, 330, 332  
Langley, 141  
Langtry, 211  
Large, 246  
Larnach, 14, 21, 45, 46, 66, 67  
Latham, 140  
Laver, 168  
Lawn, 133, 170, 172  
Lawrie, 23  
Laws, 23  
Lawson, 319  
Lea, 114  
Lears, 121, 215  
Lee, 326, 327, 351  
Lee Chan, 354  
Lee Lee Chong, 354  
Lee Yen, 354  
Leek, 32, 37  
Lees, 189, 190  
Leichhardt, 3  
Leith-Hay, 7, 8, 14  
Lester, 26  
Lewis, 41, 73, 155, 156, 322, 327, 329, 330, 331, 332, 333  
Liddell, 205  
Liddington, 29, 30, 70, 313  
Lidstone, 32  
Lin Hop, 352  
Linnett, 75, 200, 322  
Liong Wah, 354  
Liong Wing, 351  
Little, 13, 278  
Livermore, 121, 159  
Lloyd, 156  
Lonergan, 329, 331, 332  
Long, 275  
Longford, 82  
Lorensen, 86, 314  
Lorentzen, xii, 79, 94, 96  
Loughron, 198  
Lowther, 141  
Loyola, 343  
Lucas, xi, 127, 137, 161, 162, 164, 255, 256  
Luck, 78, 349, 350  
Luisky, 145  
Lukin, 30, 247  
Lunrup, 170, 172  
Luton, 333  
Lutton, 90  
Lye, 206  
Lyle, 15  
Lynam, 86  
Lynch, 32  
Lyons, 107  
Lysaght, 182  
Lyttle, 136  
Macalister, 26  
Macaree, 41, 43, 55, 158, 159, 254  
Macarthur  
    John Alexander, 30  
    Patrick, 153  
Macartney, ix, 7, 8, 9, 10, 24, 59, 316, 394  
Macaulay  
    George Cunningham, 347  
    George Robert, 347  
    Joan, 348  
    Maud, 348  
Macdonald, 23, 74, 86, 211  
MacDonald, 56, 281  
Macfarlane, xv, 157, 278, 299, 389  
Machefer, xii, 193, 194  
Mackay, 33, 34, 96  
Mackean, 53, 54, 127, 229  
Mackey, 343  
Mackin, 60  
MacPherson, 280, 356  
Macquarie, 67  
Madden, 193  
Maguin, 319  
Mainardt, 326  
Mallory, 189  
Malone, 131, 179  
Maloney, 196  
Mann, 257, 259  
Mansfield, 46  
Manson, 11  
Mao Tse Tung, 351  
Markerow, 163  
Marks, 230  
Markwell, 223  
Marlick, 329  
Marooney, 41  
Marsen, 145  
Martens, 211  
Martin  
    Annie, xiv, 349, 350  
    Arthur, 20  
    Augusta Louise Marie, 218, 271  
    Eleanor Maud, 348  
    Fredricka Wilhelmina, 258  
    George, 319  
    Hugh, 336  
    Ida, 336  
    Ida Elizabeth, 272  
    James, 343, 348  
    James Hugh, 271  
    John (Jack), 131  
    Joseph, 199, 200, 269, 270, 274, 277  
    Joseph Gerrard, 145  
    Leslie, 336  
    Maud, 348  
    Maud Ellen, 347  
    William, 336  
Marwood, 34



- Maskell, 234, 327  
Mason, 24, 208, 209, 322  
Matisse, 25  
Matthias, 282, 324  
Maunsell, 172  
Maxwell, 115, 155, 322  
Mayne, 7, 9  
McBean, 109, 239, 240, 266  
McCabe, 74  
McCaffrey, 53  
McCallum, 85  
McCarthy, 345  
McCartney, 209, 267  
McCarty, 322  
McConnell  
    James, xi, 72, 78, 79, 80, 92, 93, 96  
    Margaret, 103  
    Robert, 85, 92  
McDermott, 155, 156, 157  
McDonald, 32, 37, 43, 88, 110, 260, 320, 324  
McDonely, 19  
McDonough, 73  
McEwen, 69  
McFie, 172  
McGeechan, 198  
McGill, 324  
McGrath, 244, 245  
McGregor, 91, 314  
    Elizabeth, xii, 79, 91, 92, 93, 94, 95, 96, 98,  
    99, 101, 109, 111, 254  
McGuffie, 73  
McGuinness, 210  
McHugh, 159  
McKay, 170, 172  
McKean, 235, 237, 327  
McKelligett, 25, 26  
McKelvie, 330, 332, 333  
McKenn, 215  
McKenna, 277  
McKenny, 157, 159  
McKenzie, 32, 37, 83, 159, 186  
McKewen, 177, 317  
McLachlan, 155, 296  
McLatchey, 109, 111, 249, 250, 292  
McLaughlan, 156  
McLean, 130, 173, 214, 319  
McLeod, 198, 199, 201  
McMullen, 245  
McMurtrie, 322  
McQuinn, 322  
McSwaine, 276  
McTavish, 172, 320  
McVeigh, 134  
Medcraf, 209, 210  
Meilland, 126  
Melbourne, 40, 63, 217  
Mellor, xiii, 233, 235, 322  
Melville, 240, 356  
Melvin, 287  
Mende, 126  
Menzies, 304  
Merrill, 329, 332  
Michel, 15, 24, 97  
Milford, 40, 66, 68, 73, 193  
Millan, 189  
    Adelaide Maud, 189  
    George, 257, 324, 334  
    George Albert, 189, 190  
    Henry, 257, 334  
    Henry E., 325  
    Henry Ernest, 114, 189  
    James, 259, 314, 319  
    John, 314  
Miller, 131, 159, 214, 217, 229, 257, 259, 280,  
    292, 316  
Millroy, 137  
Mills, 74, 314  
Millward, 131  
Milne, 26, 276  
Minde, 316  
Minett, 131, 146  
Minter, 180  
Miskin, 158  
Mitchell, 182  
Mitchener, 84, 179, 268, 315, 317, 319, 322  
Moffatt, 346  
Moir, 161, 162  
Mollar, 230  
Molloy, 102, 253  
Moloney, x, 25, 30, 31, 59, 81, 91, 92, 93, 94,  
    95, 97, 99, 155, 165, 254, 256, 257, 259,  
    260, 261, 280, 281, 282, 286, 313, 317, 319,  
    322, 324, 334, 337  
Monet, 25  
Moody, 257, 259, 315, 319, 322  
Moon, 261, 326  
Moore, xii, 109, 111, 236, 292, 319, 328  
Moore or Clark, 111, 191  
Morehead, 263  
Moren, 189  
Moreton, 55, 97, 119  
Morgan, 32, 37, 145, 159, 162, 249, 320, 322  
Morris, xii, 32, 37, 41, 52, 53, 54, 130, 193,  
    194, 195, 196, 197, 206, 207, 209, 289, 351  
Morrison, 233, 289, 320  
Mowat, 268  
Moyle, 278  
Muir, 325  
Mullaw, 126  
Muller, 261  
Müller, 78, 314  
Mullett, 320  
Mulligan, 42, 44, 177, 320  
Munro, 24, 180, 317  
Murchison, ix, 5, 11, 12  
Murdoch, 64  
Murlay, 44  
Murphy, 9, 14, 17, 18, 19, 24, 25, 27, 65, 67,  
    160, 281  
Murray, 21, 26, 85, 100, 140, 182, 202, 203,  
    204, 234, 235, 253, 324, 327, 328, 336  
Mustard, 326  
Mylrea, 186  
Nally, 170, 172  
Nankivill, 162  
Napier, 265

- Nash, 322  
 Neal, 51, 52, 216  
 Neale, 99, 325  
 Neaton, 270, 271  
 Nees, xiv, 271  
 Neilson, 162, 189  
 Neish, 333  
 Nelson, 141, 248, 323  
 Nettle, 245  
 Neumann, 275  
 New, 15  
 Newell, 159, 329, 330  
 Newman, 172, 329, 331, 332  
 Newton, 208  
 Nichol, 24  
 Nicholl, 25  
 Nicholls, 32  
 Nicholson, ix, 1, 3, 4, 5, 11, 12, 13, 14, 16, 17, 49, 67, 80, 159, 160, 165, 220, 394  
 Nielsen, 210, 235, 270, 271, 275, 324, 328  
 Noack, 103  
 Noah, 225  
 Nobbs, 24, 40, 56, 231, 253, 254, 264, 320, 323  
 Noble, 42, 43, 131  
 Nolan, 189, 323  
 Noonan, 206  
 Norman, 263  
 Norris, 217, 231, 253, 254, 317, 323  
 North, 287, 289  
 Norton, 168  
 Noyes, 151  
 Nutting, 66  
 O'Brien, 193, 198, 320  
 O'Connell, ix, 1, 3, 7, 14, 67  
 O'Connor, 136  
 O'Donnell, 102, 182  
 O'Donohue, 350  
 O'Donoughue, 182  
 O'Flynn, 323  
 O'Grady, 330, 331, 333  
 O'Loughlin, 31, 155, 259, 260, 314, 320, 323, 334  
 O'Neill, 334  
 O'Rourke, 42, 44, 180, 320  
 O'Shanesy, 224  
 O'Brien, 144  
 O'Connell, 67, 315  
 O'Donnell, 320  
 Oetzel, 103  
 Ogg, 52, 178, 220, 229, 282, 295, 316  
 Olive  
     Ellen Dale, 257  
     George, 257, 281, 334  
     John William Samuel, 334  
     Joseph, xiii, 77, 162, 163, 256, 258, 259, 314, 320  
     Margaret, 162  
     Morris, 257  
     Robert, 257, 334  
     Sarah Jane, 257, 334  
     Thomas, 257  
 Oliveria, 260  
 Olsen, 13, 60  
 On, 326  
 O'Neill, 29, 30, 70, 313  
 Orbell, ix, xii, 55, 56, 79, 80, 81, 111, 175, 176, 235, 316, 327  
 Orchard, 198  
 Orford, 198  
 Orr, 45, 130, 131, 132, 135, 289, 316  
 Osborne, 207, 208, 277, 299, 300  
 Ottoway, 284, 317  
 Overeye, 102  
 Owen, 30, 127, 313  
 Page, xi, 42, 44  
 Pakington, 5  
 Palmer, 18, 66, 73, 254, 317  
 Pannett, 155  
 Pardy  
     Eliza Mary, 153  
     Elizabeth Ann, 153  
     Ernest Frederick, 335  
     George, 152, 314  
     Harriet Maud Mary, 335  
     William, 268  
     William George, 150, 153, 268  
 Parker  
     Alice, 343  
     Anna, 135  
     Dorinda, 46  
     Dorothy, 135  
     Edward James, 135  
     Frank, 135  
     George, 88, 146  
     Howard, 135  
     Hugh, 105  
     Hugh Hunter, xi, 71, 173  
     James, 350  
     Jeannie, 149  
     Olive, 135  
     Robert Aktinson, 45  
 Parkes, 194  
 Parr, 101, 228  
 Parris, 174, 177, 181, 182, 276, 287  
 Parsons, 32, 37  
 Part, xi, x, 56, 73, 74, 96, 199, 200, 203, 292, 316, 320, 323  
 Pascoe, 11, 18  
 Passmore, 201  
 Paterson, 94, 254  
 Paton, 20, 21  
 Pattemore, 198  
 Patterson, 277, 323, 330  
 Pattison, 28, 45, 63, 154, 194, 197, 213, 214, 216, 247, 320  
 Patton, 106  
 Paul, 344  
 Paulson, 162, 313  
 Payne, 350  
 Paynter, 24  
 Pea, 324  
 Pearce, 70, 83, 323  
 Pears, 88, 165  
 Pearse, 41, 53, 54  
 Pearson, 120

- Peartrin, 257, 259  
 Peat, 179  
 Peck, 270, 272, 336  
 Peisley, 54  
 Péne, 15, 16, 18, 40, 41, 82, 253, 308  
 Pennycuick, 296  
 Percy, 259  
 Percy, 206, 235, 236, 257, 328  
 Perfect, 162, 211, 317, 324, 336  
 Perle, 117  
 Permein, 13, 14  
 Perriman, 32  
 Perroux, 282  
 Petersen, 219  
     Agnes, 272  
     Berta Matilde, 272  
     Bertha, 336  
     Heinrich Kam, 218, 219, 270, 271, 286, 317  
     Henry, 336  
     Henry Kam, 271  
     Johan Peter, 229  
     Johann Peter, 219  
     John Peter, 229, 320  
     Minnie, 336  
     Rasmina, 272  
     Peterson  
         John A., 323  
 Pfitzenmaier, 52, 229  
 Phillips, 86, 127, 137, 143, 145, 179, 186, 197,  
     203, 204, 214, 222, 223, 289, 293, 323, 324  
 Philp, 231  
 Phipps, 162, 324  
 Phythian, 85  
 Pickering, 23, 24, 25, 26, 29, 46, 313  
 Pihan, 320  
 Pilbeam, 304  
 Pile, 15, 71  
 Pilkington, 131, 238, 320, 328  
 Pinkerton, 75  
 Pinkney, 32, 37  
 Pinnock, 69, 70  
 Pintway, 32  
 Pitt, 228  
 Plahn, 333  
 Pollard, 179  
 Pong, 349  
 Poole, 280  
 Pope, 89, 323  
 Porter, 4, 315  
 Portus, 253  
 Powell, 282, 317  
 Power, 175, 232, 323  
 Prouse, 187  
 Purdy, 141, 143, 146  
 Purnell, 289, 327  
 Pybus, 46, 157, 159, 167  
 Quan Ju, 351  
 Quilley, 113, 114, 320  
 Radcliff, 68  
 Raff, 25, 29, 46, 95, 313  
 Raines, 189  
 Ramsay, 7, 14, 94  
 Ranken, 62, 77, 80  
 Ranking, 248  
 Rasmussen, 210, 211, 214, 320, 324  
 Rathbone, 223, 268  
 Rawson, 110, 227, 228  
 Rea, 77, 104, 155, 218, 219, 314, 320  
 Read, 173  
 Real, 86  
 Reaney, 184, 218, 219, 232, 236, 238, 254,  
     266, 281, 284, 285, 288, 323  
 Rees, 148  
 Reeves, 170, 172, 257, 259, 320, 334  
 Reid, 44, 107, 137, 149, 193  
 Reilly, 27  
 Reinke, 203  
 Renshaw, 278  
 Renton, 346  
 Reuter, x, 117, 120, 214, 216, 219, 270, 271,  
     272, 324, 336, 385  
 Reynolds, 329, 330  
 Ribyitzki, 75  
 Rice (Royes), 101  
 Richardson, 79, 80, 91, 93, 94, 96, 97, 98, 103,  
     105, 179, 181, 235, 276, 328  
 Richmond, 323  
 Richter, xii, x, xiii, 103, 104, 105, 107, 225,  
     226, 258, 285, 287, 288, 309, 310  
     Ernest John, 170, 275  
     Frederick Norman, 230, 333  
     George, 103, 104, 107, 271  
     George Ernest, 102, 103, 105  
     George F., 171, 225, 238, 316, 329, 330,  
         331, 333  
     Helene, 225  
     Ivy, 337  
     John, 104, 170, 223, 275, 287, 310, 316, 320  
     John Frederick, 203, 225, 230, 258, 276,  
         283, 324  
     Maria Magdalene, 101  
 Ricketts, 98, 289  
 Ricks, 110  
 Rimes, 129  
 Riordan, 172  
 Risien, 9, 107, 193  
 Roberts, 25, 32, 37, 48, 49, 146, 239, 245, 314,  
     323, 342, 344  
 Robertson, 59, 162, 196, 317  
 Robinson, 155, 156, 176, 179, 189, 314, 323  
 Robison, 14, 40  
 Rodin, 25  
 Roemus, 272  
 Rogers, 40, 56, 57, 65, 68, 97, 235, 236, 253,  
     327  
 Rolls, 172, 327  
 Rooney, 124  
 Ropper, 117  
 Rosel, 59  
 Rosenberg, 210, 211  
 Ross, 9, 241, 296  
 Rowland, 182  
 Royes, 179, 340  
 Ruff, 317  
 Ruft, 229  
 Ruiz, 10, 59

- Rundle, 25  
Rush, 314  
Russell, 24, 25, 26, 31, 155, 157, 159, 313  
Ruther, 313  
Rutherford, 14, 155, 156  
Rutter, 92, 94, 96, 101  
Ryan, 131, 323, 344  
Saber, 54, 209  
Saddler, 23  
Sallows, xiii, 103, 216, 217  
Sam Yee, 205  
Samways, 197, 198  
Sandrock, 69  
Sang, 211  
Sanneman, 23  
Sansom, 177, 317  
Saul, 330  
Saunders, 30, 111  
Savage, 323  
Sawle, 332  
Say, 233, 235, 236, 239, 314, 327  
Schalch, x, xii, xiv, xi, 118, 120, 122, 124, 127, 128, 147, 163, 173, 308, 341  
    Amalia, 122, 341  
    Anna Paulina, xiv, 126, 190, 198, 219, 324, 355  
    Annie Olga, xiv, xvii, 121, 127, 338, 343, 348, 351  
    Blanche Lily, 121  
    Carl Heinrich, xiv, 120, 341  
    Carl Heinrich (Henri), 118, 120, 345, 346  
    Carl Heinrich (Henry), xiv, 341  
    Charles Emil, 343  
    Charles Ernest, xiv, 124, 165, 335, 337, 356  
    Donald Fritz, 128, 348  
    Edith Annie (Idi), xiv, 124, 204, 219, 335, 337, 355  
    Emil Ernst, xiv, 120, 338, 342, 343, 345  
    Emilie Sophie, 120  
    Emily, xiv, 127, 338, 347, 348  
    Emma, xiv, 124, 126, 147, 180, 335, 355  
    Franz Emil Heinrich, 120  
    Fritz, xiv, 117, 338, 345, 346  
    Henri, xi, 120, 121, 124, 125, 129, 162, 163, 164, 254, 304, 316, 317, 355  
    Henry, 127, 341, 342  
    J., 282  
    Janet, 335  
    Julia, xi, 121, 127, 128, 147, 164, 338  
    Julius, 120  
    Otto, xiv, 124, 162, 163, 164, 165, 286, 317, 335, 338, 355  
    Pattie, 78  
    William, xiv, 124, 190, 335, 337, 348, 356  
Schalleik, 126  
Scheikowski, 323  
Schelk, 118, 120, 121, 240, 254, 330, 331  
Scherer, 123  
Scherrer, 120  
Schirmer, 330, 332  
Schmid, 120  
Schmidt, 14, 15  
Schreck, xi, 121, 316  
Schwab, 323  
Schwarten, 170, 231  
Scott, 17, 20, 155, 156, 159, 328  
Scully, 259, 334  
Sealey, 131  
See Wah, 224  
Seeley, 99  
Seigh, 326  
Semple, 333  
Sepiez, 345  
Serecold, 14  
Sergeant, 117, 267  
Seward, 270, 271, 272  
Shale, 320  
Shand, 240, 327  
Shanks, 97  
Sharples, 53, 54, 157, 158, 209  
Shaw, 14, 87, 128, 147, 157, 161, 163, 174, 177, 178, 181, 198, 203, 205, 208, 209, 215, 238, 247, 278, 282  
Sheahan, 198  
Shearer, 24  
Shegog, 235, 328, 329, 331  
Shepherd, 205  
Sherwin, 187, 189  
Shields, 172, 234, 235, 238, 241, 270, 271, 272, 285, 324, 327, 328, 329, 330, 331, 332, 333, 336  
Simpson, 14  
Singleton, 217  
Six Jame, 351  
Skardon, 14, 27  
Skinner, 173, 272  
Sladen, 7  
Slater  
    Charles, 343, 344  
    Charles Edwin, xiv, 129, 342, 344, 345  
    David Roy, xiv, 129, 344, 345, 346  
    Frederick David Roy, 346  
    Henry, 346  
    Henry George, 345  
Slattery, 97  
Small, 35, 340  
Smalley, 51, 52, 175, 216, 315, 323  
Smallman, 107, 114  
Smallwood, 114  
Smith, x, xii, xi, 128, 142, 143, 144, 147, 148, 165, 240, 241  
    Aaron, xi, 128, 147, 148, 162, 164, 286, 317, 325, 335, 337, 341  
    Aaron Matthew Henri Emil, 147, 240, 244, 245, 329, 330  
    Alfred, 320, 335  
    Alfred George, 147, 335, 337, 347  
    Alfred Thomas, 240, 329, 331, 333  
    Annie Mary, 128, 147  
    Carl Robert, xi, xii, 147, 148, 149, 190, 335, 337  
    Daisy Edna Julia, 147, 150, 337  
    Daniel, 145  
    David, 142, 145, 168, 277, 337, 342  
    David (Dave), 147, 150, 302  
    Dell, 173, 187, 190

- Edwin John, ix, 15, 17, 22, 24, 25, 26, 29,  
31, 48, 155, 255, 295, 313  
Elizabeth, 142  
Emma, 335  
Ernest Octavius, 160  
Felicia, 150  
Frances, xi, 143, 144, 145, 159, 317, 335  
Frank, 323  
Frederick Harold, 333  
George, 336  
George Gilbert, 147  
George Henry, 240, 328, 329, 331, 333  
Glen, xi, xv, 144, 147, 149, 150, 173, 180,  
335, 337, 342, 347  
H., 270, 327  
Henry Curtis, 157, 159  
Herbert Edward, 54  
Hilda May, 335  
Irene, 272  
John, 24, 142, 304, 314, 316  
John (Professor), 304  
John Frederick (Jack), xi, 147, 149, 150,  
335, 337  
John William, 145, 223  
Julia, xi, 138, 148, 165, 239, 240, 241, 244,  
245, 246, 261, 277, 309, 312, 332, 348  
Kenneth Roy, 147, 150, 277, 337  
Kitty, 272  
Lesby, 335  
Maida (May), 272  
Mary, 142  
Mary Jane, 145, 146, 338  
Mathew, xi, 141, 142, 143, 144, 145, 157,  
180, 191, 223, 237, 281, 282, 308, 316,  
325  
Matthew, 146  
Maurice, 172  
Minnie, xi, 148  
Mrs Julia, 129, 244, 277, 329, 330, 332  
Nancy, 272  
Reginald, 86, 336  
Robert, 146, 316  
Rose Olga, xi, 147, 148, 149, 335, 337  
Sarah, 335, 338  
Sarah Ann, 146  
Thomas, 131, 142, 146, 280, 325, 337, 338  
Thomas Richard, 146  
Tom, 147, 149, 211, 335  
William, 157, 159, 172, 235, 328, 336  
William H., 323  
William J., 320  
William James, 189  
William John, 145, 314  
Smyth, 335  
Sneddon, 244, 245  
Snell, 317  
Soden, 215  
Solomon, 86  
Sommer, 320  
Spafford, 323  
Spanner, 234, 325, 327  
Spargo, 327  
Spencer, 254  
Spier, 134  
Spike, 15, 16  
Staight, 354  
Standish, 280  
Stansbury, 157  
Starcke, 227, 228  
Steed, 235, 236, 328, 330  
Steen, 158  
Stein, 158, 336  
Steine, 199, 200, 270, 272, 336  
Stenhouse, 90, 133, 199, 203, 289  
Stenlake, 340  
Stephen, 160  
Stevens, 13, 109  
Stewart, 32, 34, 35, 37, 45, 235, 325, 327  
James, xi, 137, 156, 157, 177, 282, 286,  
308, 310, 312, 316, 317, 320  
John, 68, 333  
Margaret, 35, 68, 69  
Walter, 68  
Stieke, 230  
Stinton, 175  
Stokoe, 180, 181, 182, 282  
Stoltz, 114, 115, 121, 320, 325  
Stone, 257  
Stopford, 210, 211  
Strachan, 167, 169  
Strelow, 214  
Stringer, 127  
Strow, 315  
Stuart, 13, 53, 213, 214, 280, 320  
Sue Yek, ix, 53, 54, 199  
Sullivan, 32, 179  
Sully, 152  
Sun Yat Sen, 351  
Sutherland, 10, 251  
Sutton, 203  
Swain, 272  
Swanson, 134, 137, 236, 301, 316  
Swanwick, 248  
Tait, 316  
Talbot, 148, 340  
Tamm, 10  
Tang Yee (Samuel), 346  
Tasmal, 326  
Tati, 302  
Taylor, 85, 130, 177, 210, 235, 315, 325, 328  
John, ix, 34, 48, 49, 50, 54, 80, 81, 177, 182,  
184, 186, 247, 248, 261, 280, 308, 311,  
312  
Teague, 175, 214  
Teed, 323  
Tees, 241  
Terry, 41, 170, 172  
Thackeray, 78, 172, 215, 276, 284, 323, 325,  
336  
Thiesson, 320  
Thirkettle, 260, 320, 323, 335  
Thomas, 113, 114, 152, 179, 197, 214, 260,  
320, 323, 337  
George Silas, 89  
Margaret Marion (Maggie), 87  
Thomasson, 179, 189, 280, 320

- Thompson, xii, 32, 37, 131, 147, 170, 187,  
223, 231, 265, 282, 284, 285, 293, 294, 295,  
296, 311, 317, 323, 327  
Thomson, 10, 121, 159, 206, 316  
Thon, 30  
Thornton, 37, 41, 52, 53, 54, 193, 194, 196,  
197, 206  
Thozet, 13, 16, 59, 127, 253, 320, 323  
Thuge, 219  
Thurston, 53, 103, 213, 214  
Tibbett, 354  
Tichborne, 346  
Tiger, 326  
Tilbury, 220  
Till, 145, 223  
Tillidge, 323  
Timm, 130  
Hermann, 118, 228, 229  
Matilda, 117  
Tippett, 74  
Todd, 78, 162  
Tomes, 189  
Tomkins, 158, 159, 162, 163, 164, 216, 239,  
241, 327, 328, 329, 330, 331, 332, 333  
Tompson, 320  
Toon, 98, 167, 168, 169, 189, 210, 211, 286,  
313, 315, 317, 320, 325, 328, 329, 331  
Townsend, 85  
Tranent, 149  
Treacy, 296, 298, 299  
Treseder, 140, 189  
Trevaskis, 327  
Trim, 329, 331, 332  
Trodel, 117  
Trotman, 240, 241  
Trump, 30, 31, 155  
Truscott, 270, 271, 272, 325  
Tubb, 206, 208  
Tucker, 156, 157, 162, 170  
Tung Yeen (see also Wing Wah), xii, xi, 153,  
154, 168, 199, 201, 209, 210, 211, 212, 213,  
214, 218, 229, 230, 269, 274, 302, 309, 321,  
325, 326  
Ada, 211, 212  
Alick, 154  
Clarence, 217  
Lottie, 154, 211, 217  
Turnbull, 44  
Turner, 124, 131, 132, 205, 206, 208, 292, 326  
Tuttle, 314, 320  
Tutton, 320  
Tweed, 119, 224  
Twiner, 111  
Twisden-Bedford, 184  
Tynan, 85, 91  
Tyson, 24  
Underhill, 320  
Underwood, 172, 180, 232, 270, 272, 281, 282,  
283, 316, 325, 335, 336, 337  
Usher, 323  
Valdes, 10  
van Gogh, 25  
Vaughan, 330, 331, 333, 340  
Venables, 179, 180, 327, 329, 330, 331, 332  
Versmann, 323  
Vicary, 7, 170, 172, 257, 259  
Vick  
Frederick Arthur, 251  
Villiers, 149  
Vize, 128  
Vosper, 124  
Voss, 86, 186, 280, 281  
Vurnatt, 326  
Vycke, 198, 214, 219, 228, 270, 272, 315, 325,  
336, 337  
Wackford, 43, 92, 114, 115, 169, 171, 254,  
315  
Wade, x, xi, xiv, 90, 135, 199, 203, 204, 211,  
279, 309  
Christina (Teeny), x, xi, 83, 87, 89, 90, 136,  
137, 138, 151, 173, 190, 202, 203, 204,  
205, 206, 208, 278  
Edward John (Ted), xi, 136, 138, 139, 337  
Frank, xii, xi, 129, 130, 131, 132, 133, 134,  
135, 136, 137, 138, 173, 201, 203, 204,  
205, 206, 264, 276, 278, 279, 309, 316,  
325  
George, xv, 87, 90, 129, 134, 135, 136, 138,  
204, 205, 337  
Ivy, xi, xv, 136, 138, 190, 205, 276, 337  
Margaret Maria, 136, 139, 173, 207, 337  
Maria, 135  
Newton, 139  
Sarah, 135  
Wah Kay, 354  
Wakefield, 217  
Wakeham, 175  
Walder, 323  
Walker, 73, 189, 212  
Wall, 215, 216  
Wallace, 172, 175  
Walls, 110, 271, 272, 320, 323, 336  
Adelaide Priscilla, 88  
Alexander, 15, 42, 56, 67, 88, 110, 167, 182,  
183, 253, 275, 307, 320, 323  
John, 182, 269, 270, 271, 275, 282, 313,  
325, 326, 336  
Walsh, 127, 180, 341  
Walter, 127  
Walters, 114, 115  
Walton, 44, 178, 194  
Wanstall, 136, 254, 256, 257, 258, 259, 260,  
284, 314, 320, 334  
Wantzlich, 162, 163  
Wantzlick, 314, 321  
Ward, 15, 23, 45, 105, 114, 118, 127, 153, 162,  
170, 172, 266, 267, 315  
Wardell, 56  
Warren, 55  
Waterman, 32, 37  
Watson, 114, 162, 289, 325  
Watt, 45, 127  
John Alexander, xi, ix, 42, 45, 46, 53, 167  
Maria, 45  
Weder, 321, 323  
Wedge, 315

- Weedon, 172, 270, 271, 272, 326  
 Weeks, 186  
 Wehmeier, 189  
 Weigmann, 157  
 Weirshauser, 92, 97, 98, 275, 315, 321, 335  
 Weisner, 267  
 Weisse, xii, xiii, 118, 119, 224, 225, 226, 229, 236, 258, 286, 310, 311  
   Alwin, 257, 335  
   Anna Maria, 98, 119  
   Arthur, 257  
   Audrey, 337  
   Christian Frederick, 118  
   Clara, 257  
   Colin Oscar, 203, 337  
   Emil, 165, 313, 321, 323  
   Emil Alwin Theodore, 97, 98, 119, 162, 219, 260, 281, 318, 325  
   Emil Oscar, xiii, 118, 224, 225, 314, 318, 321, 325  
   Eustus, 335  
   Eustus Theodore, 318  
   Evelyn J., 337  
   Fred, 323  
   Frederick, 254, 314  
   Fredrick, 259  
   Friedrich, 224, 225, 227, 281  
   George, 257  
   George Frederick, 114, 317, 321, 325  
   George Friedrich, 224  
   J., 282  
   John George, 162  
   Oscar, 254, 259, 323  
   Oscar C., 337  
   Richard, 211, 236, 257, 325  
   Richard E., 318  
 Weist (Wust)  
   Minnie, 149  
 Welch, xii, 150, 155, 159, 164, 201, 203, 204, 205, 206, 208, 222, 223, 236, 276, 278, 279, 284, 285, 286, 287, 310, 325, 337  
 Wellings, 189  
 Wells, 4  
 Werner  
   Anna Maria, 119  
   Balthazar, 97  
   Catherine, 97  
   Christina, 97  
   Conrad, 92, 97, 99, 101, 103, 104, 145, 315, 321, 323  
   Conrad Herman George, 98  
   Elizabeth Adelina, 98  
   Eustus, 92, 95, 98, 254, 316  
   Herman, x, 54, 59, 95, 96, 97, 98, 101, 119, 310, 311, 312  
   Herman Henry, 98  
   Margaret, x, 97, 323  
 West, 210, 233, 321, 346  
 Westacott, 238, 328, 330, 332, 333  
 Westergaard, 202  
 Westhead, 323  
 Westmoreland, 210, 321, 325  
 Whatmough, xiii, 114, 224, 225, 226, 227, 228, 268  
 Whitby, 323  
 White, 32, 37, 101, 106, 130, 167, 168, 169, 180, 203, 256, 258, 321, 334  
 Whitely, 321  
 Wickham, 205, 321  
 Wiggington, 199, 201  
 Wiley, 102, 121, 215  
 Wilhelmsen, xiv, 119, 219, 241, 311, 356  
   Alfred, 271, 336  
   Cyril Rudolph, 190  
   Edith Ann, 129, 241, 244, 245, 246  
   Edith Annie, 244, 332  
   Emma, 272  
   Harold Vivian, 190  
   Herbert, 271  
   Johannes Heinrich Joachim (John), 219, 270  
   John, 204, 219, 286, 316, 318, 325  
   Rudolph, 172, 204, 205, 271, 336, 356  
 Wilkings, 162  
 Wilkins, 30  
 Wilkinson, 107, 130, 289  
 Willcock, 95, 96, 107, 108  
 Williams, 32, 34, 37, 43, 68, 69, 73, 150, 223, 244, 245, 278, 290  
 Williamson, 235, 327, 328, 336, 349  
 Willoughby, 177, 282, 318  
 Wills, 248, 321  
 Wilmott, 155, 156  
 Wilson, xii, 11, 46, 67, 207, 209, 216, 228, 229, 236, 246, 318, 323  
   Albert, 316  
   Andrew, 316  
   Nathan, 290, 316  
 Winders, 140, 141, 278  
   Frances, 141, 143, 147  
   George, 141  
   John, 140  
   Moses, 141  
 Windress, xii, xi, 140, 141, 142, 145, 180  
   Aaron, 142, 316  
   Annie Elizabeth, 337  
   Daniel, 143, 147, 180, 240, 310, 316, 325, 329, 331, 332, 338, 355  
   Elizabeth, 338  
   Emma, 165, 348  
   Frank Percival, 337  
 Windross, 141, 142, 143  
 Wing Wah (see also Tung Yeen), xi, 153, 154, 211, 212, 229, 325  
 Wirth, 159  
 Withers, 323  
 Wittgenstein, 13  
 Wix, 205  
 Wodehouse, 63, 77, 80, 82, 91, 92, 93, 96, 105, 106  
 Wood, 14, 16, 161, 172, 190, 318, 323, 328  
 Woodger, 74  
 Woods, 232, 264, 278, 318  
 Wootton, 327  
 Wormald, 15, 16, 19, 20, 23, 25, 26, 27, 43, 159, 187, 394

- Worrall, 215  
 Wotherspoon, 202, 203, 325, 327  
 Wren, 323  
 Wright, 149, 189, 253  
 Wust, 149, 271  
 Wüst  
     Friedrich (snr), 316  
 Wyatt, 103  
 Wyer, 323  
 Yates, 4  
 Yee Hop, 350  
 Yong Sun, 354  
 York, x, 67, 68, 70, 80, 82, 83, 85, 86, 87, 95,  
     102, 132, 251, 258, 335, 340  
     Catherine, 83, 89, 257, 338  
     Charles, x, 68, 69, 83, 86, 90, 95, 102, 110,  
         249, 250, 301, 307, 311, 315, 325, 333,  
         334  
     Charles John Brown, 82  
     Christina (Teeny), 83, 136, 173, 257, 335  
     Dugald John, 70, 83, 88, 315  
     Edward, 70, 83, 87, 138  
     Edward Arthur Roy, 78, 88  
     Emily Vere, 83, 88, 89, 114, 202  
     Frederick William John, 83, 90, 136, 203,  
         257, 325, 335  
     Isabella, 82, 308  
     John, xi, xii, x, 34, 37, 68, 69, 70, 79, 80,  
         81, 83, 84, 85, 86, 87, 88, 89, 94, 95, 98,  
         99, 102, 112, 138, 169, 229, 247, 254,  
         259, 303, 315, 323  
     John (Jack), 90  
     Louisa, 83, 90, 257, 335, 338  
     Mabel Priscilla, 88  
     Margaret (Granny), viii, x, 68, 69, 78, 80,  
         81, 83, 84, 86, 87, 88, 90, 95, 99, 136,  
         208, 251, 310, 325, 340  
     Margaret Marion, 70, 83, 89  
     Rebecca, 337  
     Stella, 88, 338  
     Vere, 335  
 Young, 63, 85, 92, 104, 107, 170, 172, 226,  
     329, 331, 332, 343  
     Raymond, xii, 90, 212, 225  
     William, 126  
 Young (Yun)  
     William, 212  
 Youngan, 170, 172  
 Yung Chun, 354  
 Zeibig, 155, 157, 161, 162, 163, 229, 257, 259,  
     315, 318, 321, 323, 325  
 Zonca, 323
- Pests  
     Lantana, 235  
     Prickly pear, x, 107, 108, 232, 235
- Petitions, 120, 126, 129, 154, 177, 280, 284, 285,  
 286
- Places (in district)  
     Black Ball Flat, vii, ix, x, xi, xii, xiii, ix, x, xiii,  
         xv, xvi, xvii, 47, 48, 55, 77, 110, 181, 182,  
         186, 190, 229, 247, 248, 249, 250, 251, 254,  
         256, 279, 280, 291, 296, 301, 304, 305, 307,  
         312  
     Four-Mile, viii, 54, 87, 112, 132, 208, 229,  
         247, 266, 267, 280, 283, 317, 320, 324, 325,  
         335  
     Glenmore, vii, ix, x, xi, xii, xiii, xiv, ix, xi, xii,  
         xiii, xiv, xv, xvi, xvii, 6, 7, 8, 9, 10, 11, 13,  
         15, 17, 18, 19, 20, 21, 25, 27, 28, 29, 31, 33,  
         48, 52, 56, 59, 60, 61, 62, 63, 64, 65, 67, 70,  
         71, 72, 73, 74, 77, 80, 81, 83, 86, 87, 90,  
         105, 106, 117, 118, 119, 126, 128, 129,  
         141, 142, 144, 145, 146, 147, 148, 149, 150,  
         153, 154, 155, 157, 158, 160, 161, 162, 163,  
         164, 166, 167, 169, 173, 177, 178, 179, 180,  
         181, 183, 185, 186, 187, 188, 190, 191, 198,  
         203, 204, 205, 206, 207, 208, 209, 211, 212,  
         217, 218, 219, 220, 221, 222, 223, 224, 225,  
         228, 229, 231, 232, 233, 236, 237, 238, 239,  
         240, 241, 243, 245, 246, 251, 254, 255, 256,  
         257, 258, 259, 260, 261, 262, 263, 264, 265,  
         266, 267, 268, 269, 270, 272, 273, 275, 277,  
         278, 279, 280, 281, 282, 283, 284, 285, 286,  
         289, 295, 296, 299, 302, 307, 308, 309, 310,  
         311, 312, 313, 314, 316, 317, 318, 319, 320,  
         321, 323, 324, 325, 326, 334, 335, 336, 337,  
         338, 339, 340, 341, 344, 347, 348, 355, 356,  
         384, 385  
     Greenlake, 102  
     Kawana, 164, 165, 261, 292, 293, 295  
     Lower Park Avenue, xi, xii, 50, 193  
     Norman Gardens, xvi  
     Oasis Gardens, xvi  
     Park Avenue, vii, ix, x, xii, xiv, xii, xiii, xiv,  
         xv, xvi, xvii, 73, 74, 111, 117, 128, 129,  
         145, 148, 149, 150, 152, 153, 154, 164, 167,  
         168, 169, 170, 171, 172, 173, 174, 175, 176,  
         177, 183, 184, 185, 187, 190, 192, 203, 204,  
         205, 209, 211, 219, 220, 221, 222, 223, 230,  
         234, 237, 238, 239, 241, 251, 260, 261, 263,  
         264, 265, 269, 270, 271, 272, 273, 274, 275,  
         276, 277, 278, 279, 281, 283, 284, 285, 286,  
         289, 290, 292, 293, 300, 302, 308, 309, 310,  
         311, 312, 313, 316, 317, 320, 323, 324, 325,  
         326, 335, 336, 337, 339, 341, 348, 356, 384,  
         391  
     Parkhurst, xii, x, xiii, xvi, 48, 78, 88, 99, 102,  
         107, 112, 113, 114, 115, 126, 132, 150, 152,  
         153, 180, 189, 209, 228, 229, 238, 260, 263,  
         265, 266, 267, 268, 269, 271, 279, 295, 304,  
         308, 315, 317, 320, 323, 324, 326, 334, 348,  
         384  
     Queen's Park, xi, xiii, 39, 231  
     Splitter's Creek, xi, 39  
     University precinct, xiii, 304  
     Upper Park Avenue, xi, xii, xiii, 41, 43, 167,  
         302
- Places (other)  
     Asia, 4, 25, 33, 53, 124, 130, 134, 153, 304,  
         326, 348, 349, 351, 352, 354, 355  
     British Isles  
         England, xii, xi, 3, 4, 10, 12, 14, 20, 32, 34,  
             35, 36, 53, 55, 57, 68, 69, 74, 78, 82, 101,  
             117, 122, 124, 125, 129, 130, 133, 134,  
             135, 136, 139, 140, 141, 142, 143, 144,  
             152, 154, 158, 161, 173, 193, 201, 207,



- 229, 230, 253, 343, 348, 385, 389, 390, 391
- Ireland, viii, 7, 20, 32, 34, 36, 52, 71, 72, 140, 142, 178, 389, 391
- Scotland, 21, 24, 32, 34, 35, 36, 68, 70, 71, 132, 140, 157, 218, 299
- Wales, 140, 153
- Capricorn Coast & hinterland, xii, x, 7, 16, 20, 22, 25, 35, 44, 46, 53, 54, 56, 60, 62, 72, 73, 79, 80, 82, 85, 86, 92, 93, 94, 95, 98, 99, 101, 103, 104, 107, 108, 109, 111, 112, 115, 125, 126, 146, 163, 164, 170, 174, 179, 190, 202, 219, 230, 231, 235, 238, 250, 251, 258, 266, 275, 279, 290, 299, 301, 310, 316, 320, 336, 339
- Continental Europe, xii, xi, 25, 32, 34, 88, 96, 103, 117, 118, 119, 120, 124, 125, 126, 127, 142, 345, 386, 387
- North America, 10, 32, 33, 34, 68, 69, 70
- North Rockhampton settlements, 13, 14, 16, 17, 18, 20, 22, 23, 25, 46, 119, 132, 173, 185, 186, 187, 215, 255, 279, 283, 285, 289, 290, 307, 316, 317, 323
- Other colonies/states, 1, 3, 4, 5, 7, 9, 12, 19, 20, 24, 33, 35, 52, 54, 57, 61, 66, 67, 82, 89, 115, 134, 146, 160, 173, 179, 182, 193, 206, 223, 230, 268, 294, 341, 345, 347, 356, 386, 388, 389, 390, 393
- Other international, 33, 34, 35, 88, 90, 158, 223, 296, 323, 326
- Queensland (central), xi, ix, 1, 2, 3, 4, 7, 9, 10, 14, 16, 17, 19, 20, 21, 37, 48, 54, 61, 62, 63, 67, 72, 73, 74, 83, 85, 86, 90, 98, 99, 107, 109, 110, 111, 119, 127, 129, 130, 131, 132, 133, 135, 150, 153, 168, 173, 175, 176, 180, 182, 186, 187, 190, 207, 211, 215, 231, 262, 264, 266, 289, 290, 294, 298, 301, 304, 316, 319, 320, 321, 343, 388
- Queensland (north), x, xiv, 17, 20, 30, 69, 70, 114, 117, 124, 126, 130, 134, 141, 143, 152, 206, 222, 223, 293, 294, 298, 342, 343, 344, 345, 350, 351, 352, 353, 354, 355, 384, 388, 389
- Bowen, xvii, 20, 22, 69, 70, 83, 124, 187, 343, 348, 349, 350, 351, 352, 354
- Goldfields, 52, 66, 71, 89, 132, 134, 342, 343, 344, 345, 346, 352, 385, 386, 390, 391
- Queensland (south), ix, 1, 4, 5, 7, 10, 20, 30, 32, 35, 37, 45, 60, 67, 73, 81, 88, 90, 101, 111, 113, 117, 127, 134, 196, 197, 215, 221, 260, 276, 298, 347, 355, 386, 388, 393
- Rockhampton district, viii, xiv, 3, 7, 9, 11, 15, 24, 36, 44, 45, 51, 53, 60, 62, 63, 66, 72, 78, 83, 85, 98, 108, 110, 119, 121, 122, 123, 124, 125, 130, 131, 132, 134, 139, 141, 142, 143, 144, 145, 146, 155, 163, 173, 176, 179, 186, 197, 203, 241, 245, 247, 263, 275, 276, 289, 290, 294, 295, 298, 299, 309, 316, 336, 338, 347, 384, 391
- Portions
- (a) Above Norman Rd
- (various), 55, 79, 81, 91, 93, 94, 96, 98, 100, 108, 109, 292
- 11v, 107
- 16, 110, 182, 270, 295, 320
- 237B, xii, xiv, 80, 81, 82, 83, 84, 85, 90, 91, 99, 251, 259, 301, 311, 333
- 238A, xii, 78, 79, 80, 81, 82, 85, 86, 94, 95, 249, 251, 301, 333
- 239A, xii, 55, 79, 80, 85, 91, 94, 111
- 240A, xii, 79, 91, 111, 267
- 241A, xii, 79, 91, 93, 94, 108, 109, 111, 292
- 242A, xii, 79, 94, 109, 111
- 243A, 96, 311, 312
- 244A, 96
- 246A, 55, 119
- 247A, 54, 96, 97
- 248A, xii, x, 77, 78, 112, 254, 333
- 249A, xii, xiv, 80, 82, 85, 86, 87, 90, 91, 112, 254, 301, 333
- 341, 91
- 503, 107, 108, 109, 110, 301
- 661, 96, 292
- 950, 109
- 1063, 101
- 1264, 101
- (b) Around Glenmore Station
- (various), 28, 60, 64
- 124, 28
- 125, 28
- 128, 101, 103, 254
- 129, 28
- 143, 28
- (c) Near Glenmore
- (various), xi, ix, x, 17, 18, 19, 29, 41, 48, 70, 254, 255, 281, 297
- 112, xii, xi, 20, 39, 52, 155, 156, 165, 229, 256, 282, 308, 312, 320
- 113, 17, 20, 165
- 114, 21, 165, 259
- 115, 259
- 117, 18, 28, 83, 254, 259
- 117 & 118, 259
- 118, 21, 41, 105, 295
- 119, 25, 26, 95, 155, 259
- 119 & 120, xii, 26, 155, 259
- 121, xii, ix, xi, 18, 19, 24, 25, 97, 144, 157, 158, 159, 160, 204, 308, 339
- 122, 161
- 123, xi, 119, 147, 148, 155, 161, 162, 163, 164, 165, 239, 257, 258, 260, 312
- (d) Lower Park Avenue
- (various), xii, xiii, xii, xiii, 40, 51, 52, 53, 54, 91, 96, 98, 109, 111, 119, 193, 194, 196, 197, 199, 206, 209, 210, 213, 214, 215, 217, 218, 219, 222, 223, 224, 225, 227, 229, 292, 309, 311, 321
- 144, 229
- 147, 229
- 149, 221
- 150, 121, 229
- 151, 53, 229
- 152, xiii, 225, 227
- 153, 53, 229

- 239, 39, 40, 53, 55, 79, 80, 85, 91, 94, 111, 212, 230  
 241, 211  
 242, xii, 79, 94, 209, 212, 218, 282  
 243, 209, 211, 212, 223, 269, 274, 278, 309, 311, 312  
 244, xii, 40, 90, 197, 198, 206, 207, 208, 209, 311  
 244, 245 & 246, xii, 193  
 245, 73, 175, 195, 197, 198, 199, 204, 206, 278, 320  
 246, 55, 119, 195, 198, 200, 223, 319, 339  
 247, 215  
 248, xii, x, 77, 78, 112, 215, 216, 254, 311  
 249, 82, 85, 86, 87, 112, 230, 301  
 250, 222, 223, 230  
 250A, 53, 223, 283, 310  
 251, 222  
 252, 223  
 253, 222, 230, 269, 310  
 253A, 222  
 255, 153, 209, 213, 215, 216, 320  
 256, 214, 216, 217, 219, 228  
 257, 51, 52, 53, 194, 197, 304, 310  
 258, xiii, 51, 52, 216, 217, 222, 223  
 259, 218  
 260, 218, 270  
 261, xii, 197, 198, 219  
 262, 222, 310  
 263, 222  
 264, 221  
 265, 221  
 266, 193, 259  
 268, 52, 222  
 269, 53  
 270, xii, 52, 213, 217  
 271, 53  
 273, 221, 224  
 274, 221  
 277, 224, 225  
 278, 224, 321  
 279, 224, 228  
 280, 224  
 284, 222  
 286, 221  
 287, 221  
 288, 221, 224  
 289, 221, 224  
 (e) Upper Park Avenue  
 (various), xii, 40, 41, 43, 46, 47, 177, 181, 182, 184, 187, 264, 284, 296, 304, 307, 312  
 7v, 49, 264, 265, 266, 293, 311  
 8v, 265  
 9v, 132, 266  
 10v, 49, 264, 265, 304, 307  
 154, xii, 173, 174, 175, 177, 187, 281, 310, 311  
 155, 177, 251, 312  
 156, 44, 177, 178, 180  
 157, xii, 43, 65, 177, 178, 179, 180, 320  
 158, xii, 180, 310  
 159, xii, 44, 180, 181, 182, 312  
 159 & 160, xii, 180  
 160, 182  
 161, xii, 43, 111, 149, 177, 187, 188, 189, 205, 223, 282, 293, 311  
 162, xii, 167, 169, 182, 183, 184, 269  
 163, 282, 298  
 207, 47  
 207, 234 & 235, 47  
 235, 47, 56, 247, 249, 307, 311  
 236, xii, 45, 46, 167, 183, 185, 186, 240  
 237, xii, xi, xii, 43, 49, 80, 81, 82, 83, 84, 85, 99, 149, 167, 169, 170, 171, 172, 174, 176, 183, 251, 259, 269, 272, 289, 308, 311  
 237A, 49  
 238, xii, xi, 46, 79, 82, 85, 91, 94, 167, 168, 254, 278, 301, 320  
 (f) Queen's Park  
 240, 39, 40, 43, 79, 111, 240, 242  
 (g) Black Ball Flat  
 (various), 47, 184, 186, 248, 249, 250, 251, 279, 293, 295, 296, 300, 304, 307  
 165, 177, 251, 293, 294, 308, 312  
 166, 251, 261, 308  
 167, 293  
 168, 293, 294  
 169, 48  
 171, xiii, 56, 248, 291  
 172, 312  
 173, 48  
 174, 307, 312  
 176, 295  
 177, 54, 256  
 181, 311  
 183, 312  
 184, 49  
 185, 261, 312  
 188, 250, 307  
 192, 250  
 193, 250, 251, 307  
 196, 249  
 197, 48  
 199, 251  
 200, 250, 251  
 201, 114, 259, 266, 267, 295, 318  
 202, 248, 295  
 203, 248  
 204, 49, 50, 267, 308  
 205, 249, 251  
 206, 54, 247, 254, 308  
 235A, 47, 56, 247, 249, 311  
 Other places  
 Archer 19v, 290  
 Archer 21v, 290  
 Archer 64, 46, 96, 307  
 Archer 65, 307  
 Archer 72, 15, 16, 45, 89, 307  
 Archer 73, 15, 16, 307  
 Rockhampton 150, 121  
 Prisons, ix, xiv, 36, 37, 38, 69, 99, 102, 343, 350  
 Public service, 1, 3, 5, 9, 15, 28, 62, 63, 67, 80, 82, 88, 103, 107, 182, 227, 236, 238, 251, 263,

- 273, 274, 280, 282, 283, 284, 285, 286, 288, 344, 384, 386  
 Customs, 14, 51, 53, 69, 193, 195, 196, 206, 211, 221, 222, 351, 352, 354, 355  
 Education, 253, 256, 257, 259, 261, 265, 268, 277  
 Emergency, 14, 28, 42, 50, 214, 308  
 Housing, 187, 243, 244, 245  
 Immigration, 34, 354  
 Lands, 1, 3, 9, 14, 20, 39, 56, 57, 62, 63, 77, 78, 79, 80, 82, 84, 85, 92, 93, 94, 96, 103, 105, 106, 107, 109, 110, 132, 177, 181, 200, 226, 227, 228, 232, 236, 239, 241, 242, 243, 244, 245, 251, 344, 387  
 Mining, 20, 64, 86, 122  
 Post office, 4, 86, 88, 266, 276  
 Primary industries, 308  
 Public trustee, 90, 138, 154, 158, 174, 207, 248, 249, 345  
 Railway, 164, 181, 304  
 Roads & works, 14, 17, 80, 85, 182, 184, 251, 261, 274, 276, 280, 283, 290, 295, 303, 312, 386  
 Shipping & marine, 69, 70  
 Titles, 21, 29, 31, 70, 86, 155, 157, 159, 251, 385  
 Treasury, 3, 283
- R**
- Religions & faiths  
 Anglican, 4, 15, 45, 55, 56, 59, 64, 66, 73, 74, 89, 97, 122, 128, 144, 146, 158, 162, 222, 224, 237, 239, 253, 275, 279, 307, 310, 336, 389  
 Baptist, 87, 128, 149, 150, 272, 278, 302, 311, 312, 322, 387  
 Catholic, 44, 60, 253, 279, 302, 311  
 Congregational, 30, 74  
 Ecumenical, 17  
 Mennonite, 125, 235  
 Methodist, xiii, xiv, 53, 72, 90, 126, 127, 128, 129, 136, 141, 145, 147, 148, 149, 150, 168, 202, 203, 204, 222, 223, 224, 277, 278, 302, 307, 309, 310, 311, 347, 386, 387, 389  
 Methodist (Primitive), 124, 277, 278, 322  
 Methodist (Wesleyan), 53, 72, 253, 277  
 Other, xiii, 279, 309  
 Presbyterian, 52, 69, 88, 100, 119, 128, 132, 139, 157, 186, 213, 253, 310, 312, 349, 356, 389  
 Salvation Army, 87, 89  
 Society of Friends, 10, 150, 151, 201  
 Sunday Schools, 72, 127, 277, 278, 279, 349  
 Reserves, 1, 4, 15, 19, 21, 39, 40, 41, 43, 57, 83, 105, 107, 108, 126, 159, 225, 226, 230, 233, 236, 238, 240, 241, 242, 243, 254, 264, 265, 298, 299, 300, 338  
 Agricultural, 23, 45  
 Camping, xii, 107, 241  
 Ferry, 231, 238, 254  
 Fishing, xiii, 198, 225, 226, 227, 231, 309  
 Market, 254  
 Moore's Creek Cemetery, xi, 56  
 Pasturage, 254, 289  
 Pensioners, 238, 328, 329, 330, 331  
 Public park, 329, 330, 331  
 Quarry, 235, 327, 329, 330  
 Railway, 328  
 Rifle range, xi, xiv, 111, 139, 289, 290, 291, 296, 311  
 School, 265  
 Schools, xiii, 264  
 Water, 16, 108  
 Roads & streets  
 (selected name changes), xiv, 338  
 Adelaide St, 88, 89, 338  
 Albert St, 4, 128, 275, 304, 317, 319, 321, 338, 342  
 Alexandra St, xiii, 41, 43, 111, 129, 144, 165, 173, 180, 182, 187, 190, 282, 296, 303, 304, 307, 308, 311, 312, 338, 339, 355  
 Alice St, 180, 339  
 Alick St, 150, 209, 210, 211, 212, 218, 270, 275, 302, 318, 320, 324, 325  
 Alma Ln, 121, 128, 212, 226, 342  
 Alma St, 132, 145, 146, 158, 179, 211, 315, 317, 356  
 Anderson St, 120  
 Archer St, 35  
 Armstrong St, 89, 338  
 Arnold St, 146, 292  
 Bank St, 215, 246  
 Berserker St, 16, 190, 279, 317  
 Bertram St, 187  
 Birch St, 168, 200, 207, 309  
 Bolsover St, 30, 44, 57, 74, 90, 103, 106, 119, 121, 139, 144, 145, 151, 153, 187, 196, 207, 237, 266, 304, 315, 316, 338, 356  
 Boundary Rd, 295, 308  
 Breakspear St, 295  
 Bridge Sq, 144  
 Bridge St, 25, 102, 136, 235, 301, 303, 307, 308, 310  
 Brown St, 174  
 Bruce Hwy, 242, 303, 307, 338  
 Buckle St, 174, 175, 177, 270, 281, 324  
 Burnett St, 225, 277  
 Campbell Ln, 106, 127, 341  
 Campbell St, 56, 90, 121, 127, 141, 179, 207, 356  
 Canovan St, 308, 338  
 Carlton St, 251  
 Caroline St, 89, 127, 202, 234, 339  
 Cawarral Rd, 14, 16, 19, 41, 46, 54, 253, 303  
 Charles St, 255, 317, 356  
 Church St, 203  
 Clifton St, 96, 136  
 Cowap St, 183, 187, 281, 282, 307, 308, 338  
 Davis St, 187  
 Dawson Rd, 21, 22, 45, 56, 90, 315  
 Dean St, 14, 16, 111, 148, 310, 312, 338  
 Denham St, 8, 46, 127, 133, 139, 145, 179, 187, 198, 238, 316, 338  
 Denison Ln, 127  
 Denison St, 102, 105, 127, 128, 145, 222, 231, 275, 315

- Derby St, 8, 44, 113, 127, 134, 154, 179, 203, 316  
Dooley St, 309  
Douglas St, 339  
Dowling St, 246  
Duffy St, 312  
East St, 5, 8, 14, 20, 26, 44, 45, 91, 113, 114, 121, 134, 144, 145, 146, 148, 151, 153, 154, 164, 168, 178, 179, 193, 217, 230, 249, 296, 303, 315, 316, 326  
Edgar St, 311  
Edington St, 175, 200, 202, 285, 307  
Edward St, 180, 288, 317, 318, 319, 320  
Edwin St, 89  
Elizabeth St, 174, 176, 177, 339  
Elphinstone St, 16, 317  
Emu Park Rd, 86, 290  
Face St, 289, 292, 338  
Farm St, xiii, 39, 41, 129, 177, 249, 307, 308, 310, 311, 312, 338, 339, 355  
Farrell St, 212, 261, 311  
Feez St, 312  
Fitzroy St, 45, 114, 128, 137, 138, 139, 144, 145, 149, 150, 165, 198, 199, 200, 201, 202, 203, 204, 207, 211, 231, 268, 270, 278, 282, 303, 316, 317, 324, 325, 337, 339  
Ford St, 183, 266  
Frenchville Rd, 16  
George St, 45, 106, 127, 134, 136, 137, 198, 202, 203, 318, 339  
Gladstone Rd, 98, 127, 211  
Glenmore Rd, xiii, xi, xii, xiv, 53, 90, 126, 129, 144, 145, 146, 147, 148, 150, 154, 162, 167, 169, 173, 177, 179, 180, 181, 183, 187, 188, 190, 198, 203, 204, 205, 206, 207, 208, 209, 211, 212, 217, 222, 225, 229, 232, 233, 236, 237, 238, 240, 241, 243, 245, 246, 261, 269, 270, 272, 275, 277, 278, 279, 280, 281, 282, 285, 296, 308, 309, 310, 311, 313, 317, 318, 321, 323, 324, 325, 326, 335, 337, 338, 339, 347, 348, 355, 356  
Glenmore Rd (new), 236  
Glenmore Rd (old), 187, 338  
Gough St, 87, 129, 138, 190, 201, 204, 205, 206, 208, 309, 310, 311, 339, 355, 356  
Greenlake Rd, 71, 74, 105, 106, 155, 170, 175, 218, 318, 321  
Hadgraft St, 153, 270  
Harp St, 339  
Haynes St, 39, 41, 157, 167, 168, 175, 176, 177, 178, 180, 204, 209, 223, 270, 276, 278, 285, 292, 302, 310, 311, 312, 324, 339  
Hempenstall St, 312  
Henderson St, 111, 149, 190, 282, 355  
Henry St, 172, 173, 270, 323, 339  
High St, 149, 304, 307  
Highway St, 223, 224, 310  
Higson St, 339  
Hinchcliffe St, 261, 302, 308, 312  
Hogan St, 339  
Hollingsworth St, 177, 180, 310, 312, 339  
Hopkins St, 200, 201, 204, 205, 241, 311, 339  
Hunter St, 169, 173, 269, 270, 275, 313, 338  
James St, 318, 320, 321, 339  
John St, 170, 173, 259, 270, 289, 313, 317, 318, 319, 324, 338, 347  
Johnson Rd, 295  
Johnson St, 308, 339  
Kennedy St, 339  
Kent Ln, 56  
Kent St, xiii, 54, 106, 128, 139, 147, 223, 315, 316, 338  
Kerrigan St, 46, 206, 312  
Kirkellen St, 88, 258  
Knight St, 167, 241, 304  
Lakes Creek Rd, 168, 297  
Larcombe St, 219, 310, 311  
Lauga St, 150, 167, 168, 278, 302  
Linnett St, 137, 301, 339  
Lion Creek Rd, 302  
Little Musgrave St, 307  
Little Quay St, 24, 27  
Lloyd St, 230, 311  
Lower Glenmore Rd, 177, 238, 276, 283, 285, 308, 317, 324, 325  
Lower Yaamba Rd, 178, 180, 198, 199, 200, 201, 202, 203, 204, 209, 210, 231, 236, 259, 269, 270, 276, 280, 282, 313, 314, 316, 317, 318, 319, 338, 339  
Lucas St, 339  
Macalister St, xii, xiii, 126, 128, 190, 201, 204, 216, 219, 230, 270, 272, 279, 283, 285, 310, 316, 317, 318, 324, 325, 335, 337, 339, 356  
Macaree St, 89, 339  
Main St, xiii, 41, 167, 168, 172, 173, 198, 205, 224, 245, 266, 302, 303, 308, 309, 311, 338, 339, 356  
Mary St, 176, 324, 339  
McDonald St, 120, 121  
McIlwraith St, 178, 339  
McLaughlin St, 46, 161, 312  
Medcraf St, 190  
Moloney St, 165  
Mount Hedlow Rd, x, 56, 72, 80, 92, 94, 107, 112  
Mount Wheeler Rd, 83  
Mungarra Dr, 308  
Munro St, 261, 308  
Murchison St, 228  
Murray St, 128, 133, 145, 197, 205, 315  
Musgrave St, 27, 46, 48, 54, 88, 89, 90, 133, 149, 162, 167, 208, 218, 232, 236, 238, 258, 277, 278, 279, 285, 303, 307, 310, 317, 338  
Myrtle St, 177, 180, 181, 281, 282, 283, 293, 294, 296, 311, 339  
Nicholson St, 268, 339  
Norman Rd, xiii, x, xiv, 16, 41, 46, 93, 109, 111, 139, 191, 249, 250, 251, 285, 286, 289, 291, 292, 304, 307, 308, 310, 311, 312, 324, 338, 339  
Normanby St, 222, 339  
North St, 90, 106, 127, 136, 151, 230, 231, 292, 309  
Painswick St, 303, 319, 321  
Palmer St, 179  
Park Avenue St, 167, 170, 281

Park St, 167, 168, 169, 173, 198, 199, 200,  
206, 207, 209, 241, 246, 259, 269, 270, 277,  
309, 313, 317, 318, 320, 321, 325, 338, 339  
Part St, 339  
Pearce St, 266  
Port Curtis Rd, 268  
Power St, 180, 310, 339  
Quay Ln, 4, 45, 46, 193  
Quay St, 8, 21, 22, 35, 45, 46, 73, 114, 134,  
161, 178, 193, 302, 340  
Queen Elizabeth Dr, 88, 89, 307, 310  
Queen St, 37, 237, 319  
Randwick St, 179, 319  
Reaney St, 301, 339  
Richardson Rd, xiii, 39, 177, 180, 190, 249,  
282, 294, 296, 301, 302, 303, 307, 308, 310,  
311, 312, 339  
River Rose Dr, 250, 307  
River St, 178, 180, 198, 199, 202, 203, 204,  
324, 338, 339  
Rose St, 97, 339  
Scott St, 46, 48, 312  
Sedborough St, 136, 316  
Simpson St, 14  
South St, 146, 213, 231  
St Lawrence Rd, 86  
Stanley St, 127, 145, 146, 316  
Taylor St, 168, 173, 177, 187, 311  
Thackeray St, 149, 173, 290, 339  
Thomasson St, 187, 191, 282, 303  
Thompson St, 245, 285, 309, 311, 312, 339  
Thorn St, 339  
Thornton St, 139, 207, 209, 241, 242, 243,  
245, 277, 292, 301, 308, 309  
Todd St, 157  
Toorilla Rd, 95  
Tozer St, 178, 270  
Tung Yeen St, 168, 209, 210, 211, 218, 230,  
302  
Underwood St, 177, 339  
Unmack St, 270  
Upper Dawson Rd, 202, 203, 275, 315, 317  
Upper Glenmore Rd, xiv, 167, 169, 170, 177,  
180, 182, 183, 187, 281, 282, 283, 307, 308,  
311, 317, 337, 338  
Upper Yaamba Rd, 167, 256, 307, 338  
Victoria Pde, 148, 205, 230, 339  
Victoria Pl, 320, 339  
Wackford St, 173, 174  
Wandal St, 239  
Ward St, 179  
Waterview St, 153, 213, 339  
Wattle St, 311, 339  
Weinholt St, 120  
Werner St, 128, 219, 270  
Werribee St, 308  
West St, 4, 139, 299  
Wharf St, 184, 253, 317, 339  
White St, 167, 190, 311  
William St, 8, 18, 44, 55, 74, 108, 114, 145,  
153, 163, 197, 225, 316, 349  
Wood St, 146, 197, 316

Yaamba Rd, xi, 4, 16, 17, 18, 19, 46, 47, 54,  
56, 73, 74, 75, 77, 78, 80, 82, 85, 86, 91, 93,  
94, 96, 102, 109, 112, 119, 132, 133, 136,  
162, 165, 167, 183, 185, 202, 238, 240, 247,  
249, 251, 255, 258, 259, 263, 264, 266, 279,  
280, 281, 285, 286, 287, 295, 296, 300, 303,  
304, 307, 308, 310, 311, 312, 314, 315, 317,  
318, 319, 320, 335, 338, 339  
Yaamba Rd (alternative), 280  
Yaamba Rd (Hill Rd), 279  
Yaamba Rd (main), xiii, 18, 19, 27, 46, 48, 49,  
51, 57, 80, 133, 144, 162, 167, 247, 279,  
280, 281, 282, 293, 307, 311, 335  
Yaamba Rd (new), 27, 42, 49, 112  
Yaamba Rd (old), 46, 47, 48, 54, 79, 80, 251,  
256, 258, 307, 319, 320, 335, 339  
Yaamba Rd (original), 46  
Yaamba Rd (South), 27, 130, 132  
Yeppoon Rd, xiii, 94, 103, 108, 109, 164, 249,  
263, 267, 275, 301, 304, 308, 310, 311, 315,  
319, 335, 339  
York St, 225, 227, 229, 310

## S

Selections & leases, xi, xii, 54, 62, 63, 77, 79, 81,  
83, 85, 86, 91, 96, 97, 107, 385  
Agricultural homesteads  
AH 877, 107  
Grazing Farms  
GF 116, 132  
GF 4256, 344  
Grazing homesteads  
GH 4040, 344  
Occupation licences  
Occ Lic 194, 344  
Pre-emptive leases  
Pre-empt 57, 79  
Priority leases  
Priority leases, 242  
Selections  
Sel 43, 80, 81, 82, 99  
Sel 57, 98  
Sel 128, 79, 94, 98, 99  
Sel 144, xii, 105  
Sel 176, 295  
Sel 184, 79, 91, 92, 94, 96  
Sel 201, x, 112, 113, 114, 266  
Sel 225, 96  
Sel 231, 78, 79  
Sel 232, 79  
Sel 237, 82, 93, 96, 99, 104  
Sel 238, 100, 104, 105  
Sel 239, 79  
Sel 241, 79, 100  
Sel 256, 79  
Sel 263, 83  
Sel 277, 279  
Sel 288, xii, 94, 99, 101, 102  
Sel 291, 80  
Sel 316, 103  
Sel 342, 80  
Sel 449A, 94  
Sel 485, 79, 99  
Sel 503, xii, 94, 95, 96, 97, 107

- Sel 533, 81, 82, 85, 86  
 Sel 534, 82  
 Sel 661, xii, 73, 92, 96, 117  
 Sel 664, 97  
 Sel 795, 103, 104  
 Sel 836, 103, 104  
 Sel 877, 99  
 Sel 950, 91, 92  
 Sel 1263, 79  
 Sel 1371, xii, x, 105, 106, 170  
 Sel 1379, 92  
 Sel 1380, 97, 107  
 Sel 1529, 92, 93, 97  
 Sel 1530, xii, 93, 94, 97  
 Sel 1687, 96  
 Sel 1712, 63  
 Sel 1743, 63  
 Sel 1838, 106  
 Sel 1918, 64  
 Sel 2356, 104  
 Sel 2375, 104  
 Sel 2378, 99, 104  
 Sel 2385, 100  
 Sel 2388, 105  
 Sel 2418, 100  
 Special leases, xiii, 227, 232, 233, 236, 240, 241, 243, 244, 245, 265, 266  
 SL 979, 232, 233  
 SL 1296, 233
- Ships**  
 (Black Ball Line), xi, 33, 34, 48, 49, 387  
 (E. & A. Steamship Line), 354  
 (Orient Line), 134  
 (Qld Royal Mail Line), 124  
 Albion, 5, 173, 196  
 Almora, 224  
 Aramac, 133, 134  
 Beejapore, 72  
 Boomerang, 7, 35  
 Bounty, 66, 173  
 Burwah, 126, 211  
 Caesar Goddefroy, 96  
 Calcutta, 48  
 Carnatic, 141  
 Cawarra, 193  
 Changsha, 352, 354  
 Chyebassa, 115, 118, 130, 152, 229  
 Clarence, 4  
 Colonist, 35  
 Dacca, 201  
 Darling Downs, 48  
 Devon, 90  
 Duke of Argyll, 154  
 Duke of Buccleuch, 161  
 Duke of Buckingham, 151  
 Duke of Norfolk, 134  
 Eagle, 10, 53  
 Earl Granville, 132  
 Eastern, 351, 354  
 Ellida, 173  
 Empress of the Seas, 71  
 Ferdinand de Lesseps, 48  
 Flying Cloud, 34, 48  
 Fritz Reuter, 115, 117, 118, 119, 120, 121, 240, 345  
 Great Queensland, 48  
 Greyhound, 35  
 Hampshire, 175  
 Highflyer, 299  
 Indus, 48  
 James Harris, 3  
 John & Lucy, 53  
 Jumna, 141  
 Kennedy, 17  
 Lammershagen, 119  
 Landsborough, 27  
 Maulsden, 228  
 Merkara, 115, 117, 124, 128, 135, 141, 143, 146  
 Murray, 69  
 Oceanic, 135  
 Omrah, 134  
 Ophir, 135  
 Orizaba, 135  
 Peregrine, 134  
 Potosi, 125  
 Ramsey, 48  
 Ravenscrag, 152  
 Roma, 302, 348  
 Saurian, 173  
 Scottish Lassie, 119, 219  
 Southern Belle, 48  
 Star of England, 55  
 Star Queen, 48  
 Storm King, 48  
 Strathearn, 72  
 Sultana, 150  
 Sybil, 223  
 Taiyuan, 354  
 Tanda, 355  
 Tara, 126  
 Telegraph, 158  
 Three Friends, 69  
 Utopia, xi, xiv, ix, xiv, 4, 32, 33, 34, 35, 36, 37, 48, 51, 68, 69, 70, 71, 75, 87, 105, 340, 385, 391  
 Wansfell, 34, 150  
 Young Australia, 48
- Signatures**, ix, x, xi, xii, xiii, xiv, 24, 31, 60, 64, 80, 92, 112, 115, 166, 192, 216, 230, 246, 248, 262, 263, 305, 345, 346, 347, 350, 353
- Stations & runs**, 7  
 (King family), 20  
 Allendale, 346  
 Archer, 114  
 Ballaby, 346  
 Barmoya, 99  
 Bladensburg, 346  
 Bunda Bunda, 346  
 Calliungal, 53  
 Clairview, 14  
 Coreena, 200  
 East Darr, 131  
 Glen Prairie, 10, 45

- Glenmore, xi, ix, xvi, 6, 7, 9, 10, 11, 13, 20,  
27, 28, 48, 59, 60, 61, 62, 63, 65, 71, 72, 77,  
80, 105, 155, 167, 255, 340, 385  
Gracemere, 3, 9, 10, 14, 59, 67, 107, 141, 193,  
224  
Highlands, 346  
Jimbour, 179  
Laurel Vale, 344  
Lolworth, 346  
Meadow Flats, 7, 62, 63, 71, 385, 394  
Merlin, 344, 346  
Mount Emu Plains, 346  
Mount Hedlow, 7, 46, 62, 73, 80, 94  
Nosnillor, 346  
Oondooroo, 343, 348  
Raspberry Creek, 115  
Rodney Downs, 343  
The Oaks, 115  
Tocal, 131  
Walton, 343  
Waverley, 9, 10  
Westlands, 130

## **About the author**

Lex Johnson is an analytical researcher of problems in local history. He has a passion for showcasing the districts and social environments of his heritage. Achievements include publications, a radio series, and presentations in Australia and abroad throughout a broad career spanning medicine, mathematics, information technology, business, university management and local history. His historical specializations cover Ireland, Scotland, England, Scandinavia, Switzerland, Canada, United States of America and Australia. Few other researchers match his depth of study. He is an unpaid research academic with CQUniversity Australia, but was denied entry into its Master of Arts research program in history in 2009. His adjunct employment status allows the university itself to draw upon Commonwealth funding which rewards higher education organisations for their research publications.

He is a local lad, grew up in Park Avenue and lives there today. He attended Park Avenue State School and Glenmore State High School. While at high school, he competed by invitation in the 1981 Australian Mathematics Olympiad. He studied medicine, mathematics and physiology at The University of Queensland, after which he studied actuarial matters through the Institute of Actuaries (UK), financial analysis through the Securities Institute of Australia, teaching English as a foreign language through the Royal Society for Arts (UK) and Cambridge University (UK) and teaching in general through training organisations. Among other interesting jobs, he worked three years designing computer systems for Suncorp Insurance and enjoyed several exciting roles for more than seventeen years at his hometown university.

Unlike the situation for many other historians, research, analysis and composition of his books have used no public funding. His first two in 2009 outlined the Black, McKim and Meredith families of County Sligo, Ireland, and provided an illuminative insight into their influential lives from the 1600s until the mid-1800s. An unanswered question arising from the Meredith book was resolved in a subsequent journal article in which Johnson proved the family's descent from, and numerous connections with, the baronets of Stansty and Leeds Abbey, a case which puzzled other researchers for the past two hundred years. His third book in 2011 continued the story of the Black and Parker families' subsequent influence upon the development of Central Queensland from the time of European settlement and the dawn of Australian federation. His fourth book in 2012 chronicled the first fifty or sixty years of settlement at Morinish and the goldmining and grazing families who were attracted to this now-depleted Central Queensland goldfield. His fifth book details developments on the northern side of the Fitzroy River at Rockhampton and describes how the once-scorned Park Avenue and Glenmore districts have become the driving force behind Rockhampton's evolution into the twenty-first century. These latest three books combine into a 1268-page historical compendium of Central Queensland life and social conditions from the 1850s until the 1920s and beyond. They stand head-and-shoulders above others for their contribution to knowledge of bygone days in the district.

## **Abridged list of author's publications and broadcasts**

### **Books (sole author)**

*Time and place: the Merediths of County Sligo*, 2009, ISBN 9780980633306

*Another time and place: the Black and McKim families of County Sligo*, 2009, ISBN 9780980633313

*Quiet achievers: the Black and Parker families of Central Queensland*, 2011, ISBN 9780980633320

*Morinish: where the bottle tree grows*, 2012, ISBN 9780980633337

*Brigalow scrub and melon holes: the early history of Park Avenue, Glenmore and Black Ball Flat*, 2013, ISBN 9780980633344

### **Journal articles**

Johnson, Lex, 2012, 'Unlocking an Irish paternity case from the 17<sup>th</sup> century: the Merediths of Sligo, Stansty & Leeds Abbey', in *The Irish Genealogist*, vol. 13, no. 3 (2012), pp 65–75.

Johnson, Lex, 2012, 'Central Queensland Territorial Separation Petition, November 1890', in *The CQ Genie-ologist*, 2012.

### **Radio interviews and series**

*Internationalisation of university programs*, 1993, ABC Radio Capricornia

*Second book about Irish family history*, 2009, Radio 4YOU

*Family Jigsaws: Tracing your family history* (45 episodes), 2010–2011, Radio 4YOU

*Release of third book 'Quiet Achievers'*, Feb 2012, Radio 4YOU

*Forthcoming launch of third book 'Quiet Achievers'*, Feb 2012, ABC Radio Capricornia

*Completion of fifth book 'Brigalow Scrub & Melon Holes'*, 27 Sep 2013, ABC Radio Capricornia

### **Grants**

*Development of a prototype campus information kiosk*, 1996, CQU

*Digitising a collection of early Central Queensland photographs*, 2006, CQU

### **Conference organisation**

20<sup>th</sup> *Conference of Australasian Institute of Tertiary Education Administrators*, Perth, Western Australia, 1996

### **Conference papers**

Barrie, J., Bryson, D., Johnson, L., et al, 1996, *Self-styled self-management with the tertiary sector*, in 20<sup>th</sup> AITEA Conference, Perth, Western Australia

Johnson, Lex, 1996, *Participative management in a tertiary environment*, in 20<sup>th</sup> AITEA Conference, Perth, Western Australia

Johnson, Lex, 1997, *Simplifying divisibility: a short tutorial*, in 39<sup>th</sup> Conference of Operations Research Society (UK), Bath, England

### **Seminars, workshops, invited speaking**

*Irish family history*, 2010, Rockhampton Regional Library

*Danish parish registers*, 2010, Central Queensland Family History Association

*Book launch of 'Quiet Achievers'*, 2012, CQUniversity Australia Library